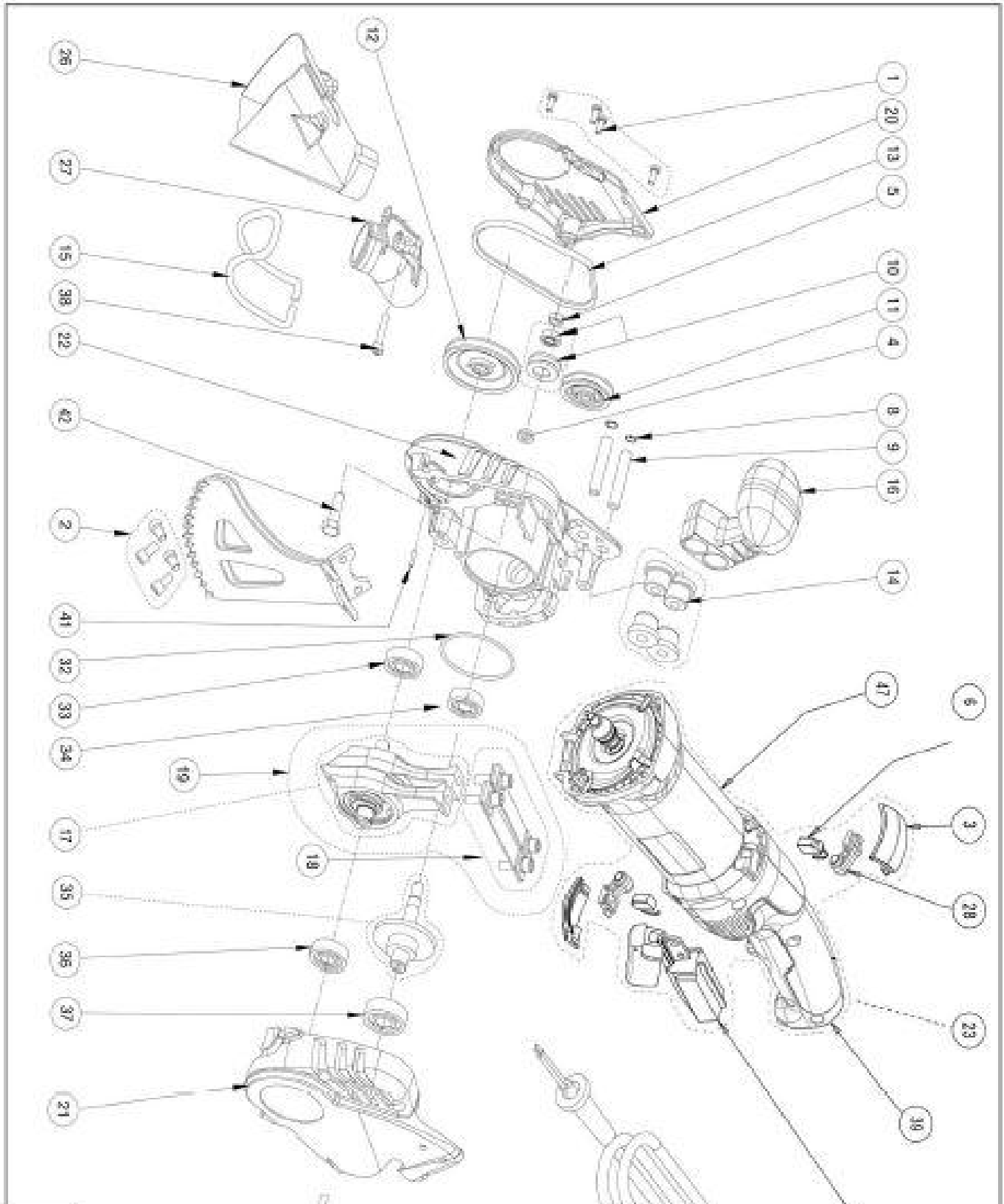


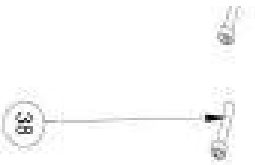
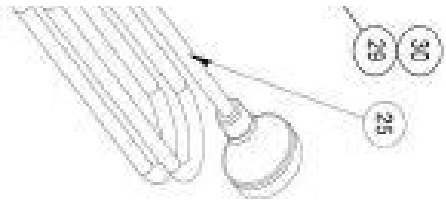
Arbortech AS170 - Australian Dealer Price List

AS170 SPARE PARTS PRICE LIST AND REF. DIAGRAM

KEY #	PART #	DESCRIPTION	MODEL	# IN PACK	RRP inc GST	DEALER ex GST
1	ALL.FG.SCREW017	BELT COVER SCREWS, M4 X 12MM	160/170	4	9.99	6.36
2	ALL.FG.BOLT17012	BOLT, BLADE BEVELLED M6 X 10	160/170	4	10.49	6.68
3	ALL.FG.BRUSH1706	BRUSH COVER, ELECTRIC	170	1	41.99	26.72
4	ALL.FG.WASH024	WASHER, STEP M6	160/170	1	6.99	4.45
5	ALL.FG.NUT006	NUT M6 NYLOC	160/170	1	5.99	3.82
6	ALL.FG.BRUSH1703	BRUSH CARBON 240V SET PKT 2	170	2	46.19	29.39
8	ALL.FG.CLIP001	CLIP INTERNAL M8	160/170	2	6.99	4.45
9	ALL.FG.PIN002	PIN, HANDLE	160/170	2	12.99	8.27
10	ALL.FG.TENSION001	TENSION PULLEY & BEARING	160/170	1	22.99	14.63
11	ALL.FG.PULLEY005	PULLEY, POWER	160/170	1	24.99	15.90
12	ALL.FG.PULLEY004	PULLEY, DRIVEN	160/170	1	24.99	15.90
13	ALL.FG.BELT02	BELT	160/170	1	25.99	16.54
14	ALL.FG.BUSH001	BUSH, RUBBER SET	160/170	4	11.99	7.63
15	ALL.FG.GUARD002	GUARD, WIRE	160/170	1	22.99	14.63
16	ALL.FG.HANDLE001	HANDLE, TOP	160/170	1	49.99	31.82
17	ALL.FG.CONROD003	CONRODS & CAM ASSEMBLY	160/170	1	249.99	159.08
18	ALL.FG.SPRINGASS002	SPRING ASSEMBLY	160/170	1	45.99	29.27
19	ALL.FG.CONROD001	CONROD ASSEMBLY	160/170	1	269.99	171.82
20	ALL.FG.COVER001	COVER, BELT	160/170	1	14.99	9.54
21	ALL.FG.HOUSE170LH	HOUSING, LEFT HAND AS170	170	1	129.99	82.72
22	ALL.FG.HOUSE170RH	HOUSING, RIGHT HAND AS170	170	1	129.99	82.72
23	ALL.FG.MOTOR1703.00	MOTOR, AS170 1250W 240V	170		DISCONTINUED	
25	ALL.FG.CORD170.00	CORD, AS170 - 230V	170	1	99.99	63.63
26	ALL.FG.BOOT001	BOOT, DUST EXTRACTOR	160/170	1	19.99	12.72
27	ALL.FG.BRACKET003	BRACKET, DUST EXTRACTION FITTING	160/170		DISCONTINUED	
28	ALL.FG.BRUSH1705	BRUSH, HOLDER SET PKT 2	170	2	24.99	15.90
29	ALL.FG.SWITCH1702	SWITCH 110/240V	170	1	99.99	63.63
32	ALL.FG.SEAL17001	SEAL AS170, O-RING M52 X 2	160/170	1	7.99	5.08
33	ALL.FG.BEARING002	BEARING CAM SHAFT 6001	160/170	1	14.99	9.54
34	ALL.FG.BEARING004	BEARING, RH CROWN 629	160/170	1	14.99	9.54
35	ALL.FG.CROWN170	CROWN SHAFT ASSEMBLY AS170	170	1	46.99	29.90
36	ALL.FG.BEARING002	BEARING CAM SHAFT 6001	160/170	1	14.99	9.54
37	ALL.FG.BEARING006	BEARING, LH CROWN 6201	160/170	1	14.99	9.54
38	ALL.FG.SCREW011	SCREW, HOUSING M5 X 25	160/170	5	5.99	6.36
39	ALL.FG.HANDLE17002	REAR HANDLE - BOTH HALVES	170	1LH / 1RH	64.99	41.36
40	ALL.FG.SCREW016	SCREW, OUTER FIELD CASING PT4-22	160/170	4	10.99	6.99
41	ALL.FG.PIN001	PIN, DOWELL M3 X 16	160/170	1	10.99	6.99
42	ALL.FG.BOLT004	BOLT M6 X 20	160/170	1	5.99	3.82
	ALL.FG.ADAPT001	VACUUM ADAPTOR	160/170	1	24.14	15.36
	ALL.FG.BAG170	BAG, AS170 TOOL	160/170	1	109.99	69.99
	ALL.FG.KEY004	KEY, TORQUE 16NM	160/170	1	15.75	10.02
	ALL.FG.FIELDCASE170	FIELD CASING	170	1	64.99	41.36
	ALL.FG.BEARING005	BEARING, CONROD 6004	160/170	1	14.99	9.54
	ALL.FG.BEARING007	BEARING, FRONT MOTOR 608-05	160/170	1	14.99	9.54
	ALL.FG.BEARING008	BEARING, REAR MOTOR 607-05	160/170	1	14.99	9.54
	ALL.FG.CLIP002	CIRCLIP INTERNAL 42 X 1.75	160/170	1	6.99	4.45
	ALL.FG.ARMATUR170.00	ARMATURE ASSEMBLY, 1250W 240V	170	1	209.99	133.63
	ALL.FG.FIELD170.00	FIELD ASSEMBLY 1250W 240V	170	1	209.99	133.63

Arbortech AS170 - Parts Diagram





PRODUCTION GENERAL ASSEMBLY  
REV. 02/01

*ALL.FG.BRACKET004 will fit older models*

