

05137

681



OPERATING INSTRUCTIONS

FLOOR GRINDER

MODEL ART- CUB Electric



WARNING

To reduce the risk of injury, all operators and maintenance personnel must read and understand these instructions before operating, changing accessories, or performing maintenance on this power equipment. All possible situations cannot be covered in these instructions. However care must be exercised by everyone using, maintaining or working near this equipment.
User must complete and sign off on there own JSEA work sheet before each use

CONTENTS

Introduction.....	2
Applications.....	2
Functions and Controls.....	2
Hazards & Risks.....	3
Operation.....	5
Preventive Maintenance.....	6
Troubleshooting.....	7
Warranty.....	7
Specifications.....	8
Spare Parts and Service.....	9

INTRODUCTION

Thank you for your selection of Parchem equipment. Parchem has specialised in the design and manufacture of quality products since 1951.

We have taken care in the assembly and testing of this product. It is covered by a twelve-month warranty. Should service or spare parts be required, prompt and efficient service is available from our branches.

General Safety Instructions for the Operation of Power Equipment

The goal of Parchem is to provide power equipment that helps the operator work safely and efficiently. The most important safety device for this or any tool is the operator. Care and good judgement are the best protection against injury. All possible hazards cannot be covered in this document however we have highlighted some of the important items. Operators must look for and obey Caution, Warning and Danger signs placed on equipment, and displayed in the workplace. Operators MUST read, understand and follow safety instructions packed with each product.

Learn how each machine works. Even if you have previously used similar machines, carefully check out each machine before you use it. Get the "feel" of it and know its capabilities, limitations, potential hazards, how it operates, and how it stops. Ensure JSEA and safety work statement completed and signed before use

APPLICATIONS

- Removing trowel marks, worn sealants, plaster, paint and surface blemishes.
- Terrazzo floors
- Finish grinding joint surfaces

FUNCTIONS & CONTROLS

The ART CUB Floor Grinder is fitted with 2.2KW single-phase motor. The motor offers a direct drive to the grinding plate with the incorporation of a flexible coupling between the motor and the plate.

The shroud system of this grinder is unique in design, automatically adjusting to suit segment height and floor angle. This shroud system, when used in conjunction with an appropriate industrial vacuum unit, practically eliminates most dust loss during grinding. The shroud has a removable section to enable the operator to grind close up to the wall. Please note that dust loss is likely when this section is removed.

The grinder comes complete with a water connection for wet grinding should this be required. This incorporates a ball valve allowing the operator to regulate the water supply to obtain the best grinding results.

The grinder has a foldable handle, which enables it to be easily transported in the boot of most small vehicles. The rear wheels can also be extended outward should the operator want more stability from the grinder. This requires the use of a 13 mm socket or spanner. The operator can also raise or lower the height of the handle to maximize their comfort when using the grinder.

HAZARDS & RISKS

GENERAL GUIDELINES

- CHECK MSDS of material being ground and follow safety direction before use
- NEVER allow an untrained or unsuitably fit competent person to operate machine without adequate assessment, instruction, competency validation, and signed JSEA.
- ENSURE all users read, understand and follow the operating instructions.
- SERIOUS INJURY may result from improper or careless use of this machine.
- CUB Grinders are heavy units and require a multiple person lift using correctly trained manual lifting techniques and people of appropriate strength when moving the surface grinder. The machine is fitted with wheels for transport and a lifting handle.

! MECHANICAL HAZARDS

- DO NOT operate the machine unless all protective guards are in place.
- CHECK machine for damaged loose or unbalanced grinding plates before use
- KEEP hands and feet clear of rotating and moving parts as they will cause injury if contacted.
- ENSURE both the machine and the operator is stable by setting up on a level surface. Make sure the machine does not tip over, slide or fall while in operation or unattended.
- DO NOT leave the machine in operation or power connected while it is unattended.
- EXERCISE CARE when operating the unit. Extended exposure to vibration or repetitive work actions may be harmful to hands, arms and other body parts.
- NEVER stand on the unit while it is operating.
- ONLY USE the recommended grinding discs or segments. Allow the machine to cool before servicing or replacing parts, severe burns may be caused by coming in contact with hot discs or segments.
- ENSURE that repairs to the motor and machine are carried out only by qualified personnel.

! ELECTRICAL HAZARDS

- ENSURE that the grinder is disconnected from electric power source and motor operation switch is in the OFF position before removing the guards or making adjustments. Keep lead over shoulder during operation.
- ENSURE that the area requiring grinding does not contain any "live" electrical cables, gas, water or communication services which may be damaged by the action of the unit.
- ENSURE that electrical cables and plugs are tested and tagged, are in good working condition and suitable for the load before using the grinder.
- ENSURE power lead is connected to a RCD which must be Tested before each use

! NOISE HAZARDS

- EXCESSIVE NOISE will lead to temporary or permanent loss of hearing.
- WEAR approved hearing protection as required by Occupational Health and Safety regulations while operating the machine to limit noise exposure.

PROTECTIVE CLOTHING

- WEAR eye protection and dust mask when working in a dusty environment, and close fitted protective clothing, such as long sleeve shirts and trousers shall be worn plus appropriate safety glasses, gloves and safety footwear, with adequate Non-Slip soles.
- WEAR sun cream, sun goggles, and wide brimmed hat in sunny exposed or high light reflecting areas.

! ADDITIONAL HAZARDS

- BEWARE of uneven or slippery work surfaces, which could create slips, trips and falls. Beware of obstacles or water left on the walking or work surface
- EXERCISE care when working in the vicinity of unprotected holes or excavations. Barricade all exposed areas.
- Ensure other persons and children are controlled and clear of the work area. Barricade the area as required
- Ensure work platform or form work is adequate to support grinding equipment and persons applied while grinding.
- Always maintain a good footing so you do not slip and loose control
- Exercise caution and ensure that the perimeter of all elevated formwork, floors or platforms is protected per Australian Standards.

SAFETY PRECAUTIONS IN OPERATIONS

The grinder has been designed to minimise noise and vibration levels and to provide maximum operator safety. However, incorrect use of the grinder may cause serious injury therefore the following precautions SHALL be taken:

1. Do not use the grinder for longer than prescribed in your local safety and environmental working regulations. The noise load from extensive daily use will result in hearing defects or exposure to excess vibration may affect some persons.
2. Always use protective close fitted clothing, earplugs or earmuffs, goggles, gloves and correct safety footwear.
3. Do not modify the grinder in any manner, or use a machine that has been modified by anyone other than the manufacturer or authorised dealer.
4. Do not attempt to stop or slow the momentum of the grinding plate by any other method than lowering the head on to the surface being ground. Failure to comply may result in serious operator injury
5. Never use damaged grinding plates or shoes
6. Do not add weight to the machine to make the grinder work harder. Instead reduce the number of segments on the grinding plate to increase grinding performance.
7. Before changing grinding plates or shoes ensure power is disconnected from the machine
8. Be sure that re-tipped and new grinding plates are properly balanced.
9. Do not run the grinder with the grinding head raised, i.e. tipped back on handle exposing the plates.
10. Always be sure that the folding handle latch is secure and has not vibrated loose after use.
11. When grinding, the machine is exposed to high vibration. Regularly check for fastener tightness after isolating from the power source.

OPERATION

BEFORE operating the grinding machine insure the operator manual has been fully read and understood

The grinder is designed for both dry and wet grinding. For dry grinding & in confined spaces, ensure a suitable industrial vacuum is connected and that the operator is wearing suitable breathing respiratory equipment. Note equipment is not designed for use in a flammable or explosive environment. If in doubt check TLV before connection of any power to the grinding machine.

Starting the Grinder

1. Check that the grinding plates being used are suitable for the material being ground
AND THAT THEY ARE CORRECTLY BALANCED.
2. Check MSDS of material being ground and follow safety instructions
3. Check that the grinding plates being used are in good order and properly attached,
with all countersunk bolts firmly in place. Check this regularly during use, as they can work loose during operation.
4. Connect extension lead via a tested RCD Note only heavy duty single phase leads not exceeding 30 metres in length should be used. Connect these to the machine using there own power outlet to avoid power supply issues which can cause the machine to trip out on a regular basis
5. Check that all Tri-knobs and the folding handle latch are tight and firm.

6. Connect industrial vacuum extension hose into the rear 51 mm port of the machine and start the vacuum, if using a separator then place this at the vacuum end of line.
Note; if possible connect the vacuum power supply to a separate power circuit
7. Ensure correct ear, eye, foot, hand, clothing PPE is worn
8. Raise the grinding plates from the floor slightly after checking area is clear.
9. Start the motor by pressing the GREEN switch on the starter box.
10. Lower the grinding plate and commence grinding.

Shutting down the Grinder

1. Gently push down on handle to raise the grinding head off the floor
2. De-press the RED stop button on the starter box and lower the grinding head to the floor once it has come to a complete stop.
3. Disconnect grinder from the power source
4. Ensure machine is stable and will not move if unattended

Changing to a different shoe type

1. Fold handle forward then tip machine onto the rear machine wheels to enable access to grinding plate. Ensure machine is stable and will not fall
2. Remove shoe retaining clip
3. Use special plastic tipped hammer to remove shoes
4. Fit new shoes, then the retaining clip
5. Check all connections are tight
6. Lower machine head back on to the floor and fasten handle latch

PREVENTIVE MAINTENANCE

- Check folding handle latch periodically which is adjustable. To adjust, loosen the lock nut on the latch and then screw in the threaded paw until a satisfactory tension has been achieved.
- Inspect the grinding discs or segments before each use.
- Check all fasteners for tightness as the machine is subject to vibration.
- Clean the underside of the unit regularly to prevent a build-up of ground material.
- The wheel bearings are a sealed type, and require no regular greasing.
- Periodically check the wear resistant plastic strip on the grinding head safety shroud to ensure these remain in contact with the floor being ground. These can be replaced easily by purchasing the new wear strips and re attaching to the shroud

TROUBLESHOOTING

SYMPTOM	POSSIBLE CAUSES AND CORRECTION
Grinder runs for 5-15 minutes, then stops	<ul style="list-style-type: none"> • Motor thermal overload tripped. Allow to cool, and then reset thermal overloads. • Extension cable too long and/ or not made from heavy enough cable. Get electrician to check extension lead compatibility. • Grinding through layer of glue causing motor to over work. Remove bulk of coating using special removal cup then finish
Grinder runs but does not perform adequately	<ul style="list-style-type: none"> • Motor defective. Repair or replace • Unsuitable grinding segment selected or too many fitted to plate. Change segment type or quantity fitted to plate
Grinder vibrates during use	<ul style="list-style-type: none"> • Grinding plates not correctly balanced. Replace with correctly balanced plates. • Grinding head flexible coupling damaged or worn excessively. Replace • Excessively worn motor bearings. Have motor serviced.
Grinding noise coming from grinding head when up on jockey wheel	
Grinding plates/ shoes wear unevenly.	<ul style="list-style-type: none"> • Grinding on rough surface. Rotate plate every 2-3 hours of 25 % of segment wear • Grinding segments on plate/ shoes not same matrix. Replace grinding plates • Grinding plates/ shoes not balanced. Replace and or rebalance • Damaged flexible coupling. Replace
Grinder will not start , runs for only a short period or starts but stops when grinding head contacts floor	<ul style="list-style-type: none"> • Wiring vibrated loose inside starter box or motor terminal box. Get electrician to inspect and repair. • Faulty low voltage trip auxiliary located inside starter switch. Replace • Faulty starter switch. Replace
Excessive dust coming from grinder when being used with removable section in place	<ul style="list-style-type: none"> • Special vacuum strip con base of shroud worn. Replace using old strips as drilling template • Vacuum filter clogged up. Shake vacuum filter and /or clean if necessary. • Insufficient vacuum being used. Select a more suitable vacuum for application

WARRANTY

PARCHEM products are covered by warranty for a period of twelve (12) months from the date of purchase against defects in material or workmanship provided that:

- The product has been operated and maintained in accordance with the operating instructions.
- Has not been damaged by accident, misuse or abuse, poor or lack of maintenance; or damaged in transit.
- Has not been tampered with or repaired by any unauthorised person.
- Has not been damaged due to the use of non Parchem supplied balanced grinding plates.

Parchem assumes no liability for indirect damage and other costs such as loss of production. The owner is responsible for the cost of transportation to and from the authorised repairer and the unit is at the owner's risk while in transit to and from the repairer.

SPECIFICATIONS

Floor Grinder

Product Part Number	ART-CUB
Product Description	Floor Grinder Electric
Product Model	ART-CUB
Motor Output	2200W
Power Source	Electricity, AC 220v -240v, 50Hz, single phase
Plate Type	Standard 10" plate or Alpha Shoe
Plate Diameter	250 mm
Plate Speed	1470 rpm
Removable Shroud Section	Yes
Active Dust Shroud	Yes
Foldable Handle	Yes
Base Material	Epoxy coated steel
Unit Weight	45 kg

CONTACT INFORMATION FOR SPARE PARTS AND SERVICE

Flextool (Aust.) Pty. Ltd. ABN 53 116 784 626

Melbourne Head Office

400 Victoria Street, Brunswick VIC 3056, Australia
Tel: (03) 9380 2400 Fax: (03) 9356 8301

Sydney

Unit 1, 52 Heathcote Road, Moorebank NSW 2179
Tel: (02) 9601 1422 Fax: (02) 9824 3077

Brisbane

14 Manton St, Morningside QLD 4170
Tel: (07) 3902 2350 Fax: (07) 3399 4822

Adelaide

29-31 Manton St Hindmarsh SA 5007
Tel: (08) 8241 6000 Fax: (08) 8340 0811

Perth

47 Belmont Avenue Belmont WA 6104
Tel: (08) 9451 2077 Fax: (08) 9350 5011

Free Call Tel: 1800 801 108 (Outside the above metropolitan areas)

Internet: www.parchem.com.au

Email: sales@parchem.com.au

SERVICE SHEETS

FLOOR GRINDER

ART-CUB
SINGLE PHASE



WARNING

To reduce the risk of injury, all operators and maintenance personnel must read and understand these instructions before operating, changing accessories, or performing maintenance on this power equipment. All possible situations cannot be covered in these instructions. Care must be exercised by everyone using, maintaining or working near this equipment.

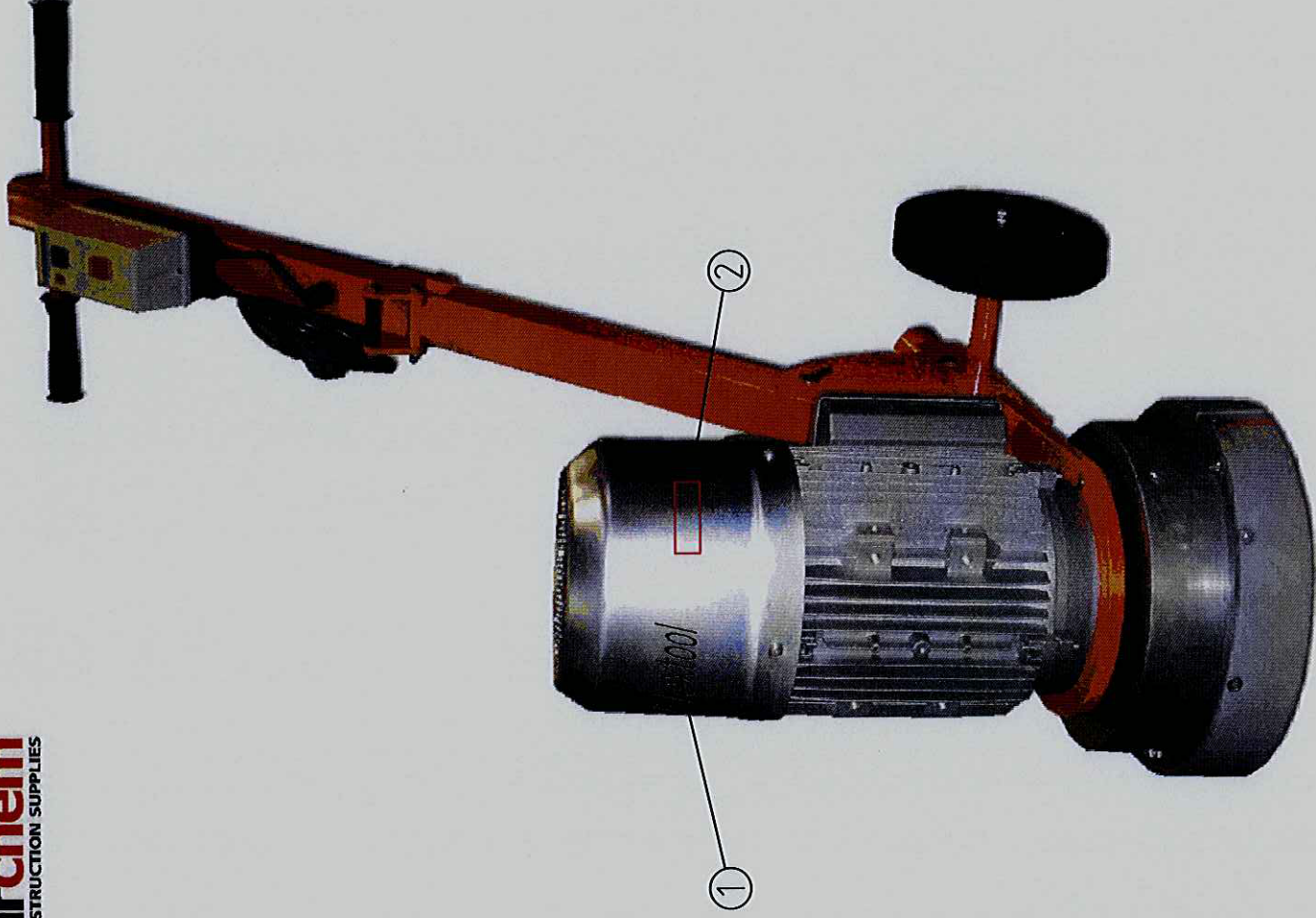


SERVICE SHEET ART-CUB-SS ISSUE 19.03.2012.

FLOOR GRINDER

(ELECTRIC MOTOR, SINGLE PHASE 220-240V,
50HZ, 12.6A, 2.2KW)

PART NO.
ART-CUB



ITEM NO.	DESCRIPTION	PART NO.	REMARKS
1	DECAL, FLEXTOOL (103MM X 28MM)	F03452	
2	DECAL, SAFETY (GRINDER)	F03469	

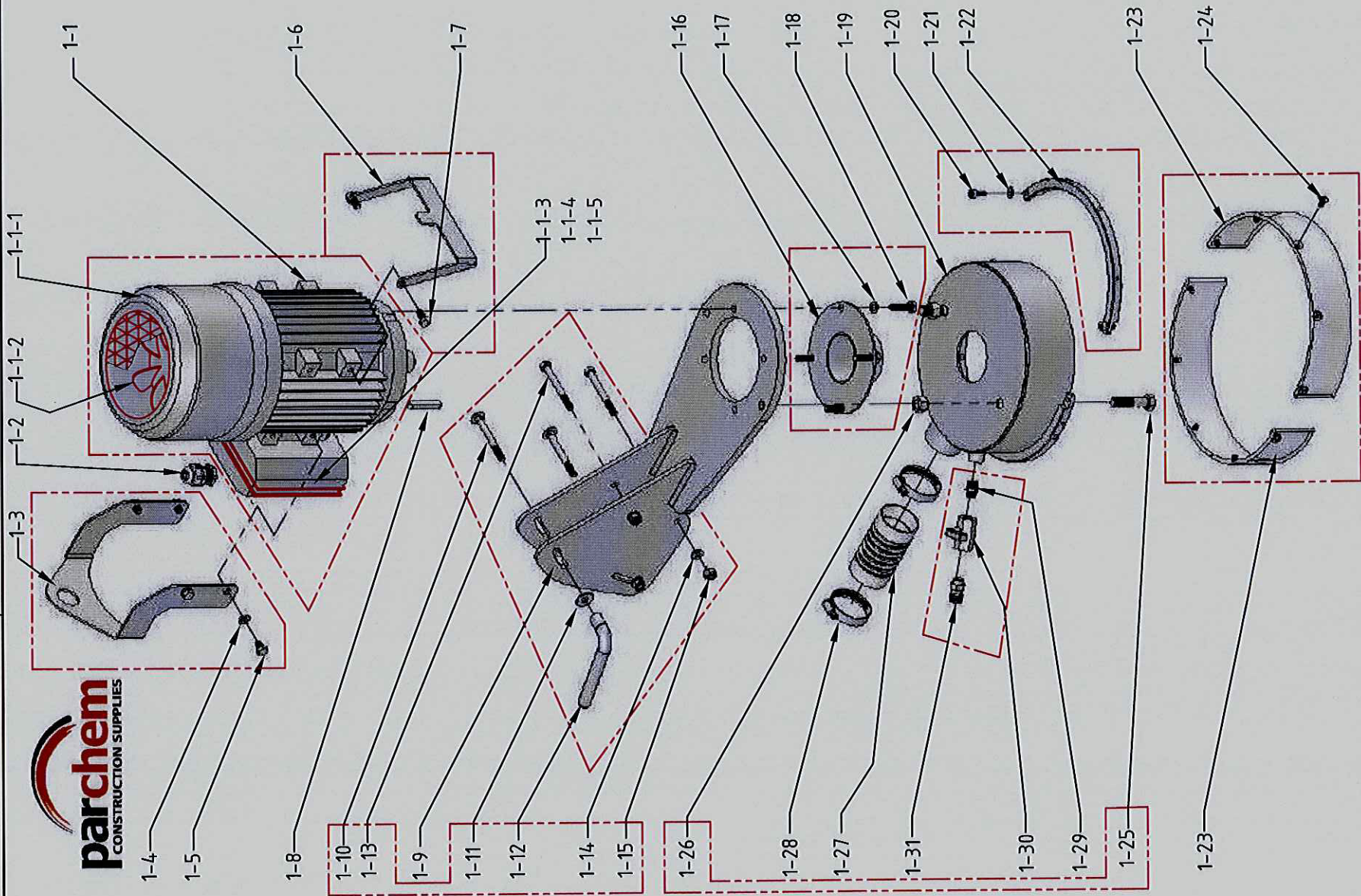


SERVICE SHEET ART-CUB-SS ISSUE 19.03.2012.

FLOOR GRINDER

(ELECTRIC MOTOR, SINGLE PHASE 220-240V,
50HZ, 12.6A, 2.2KW)

PART NO.
ART-CUB



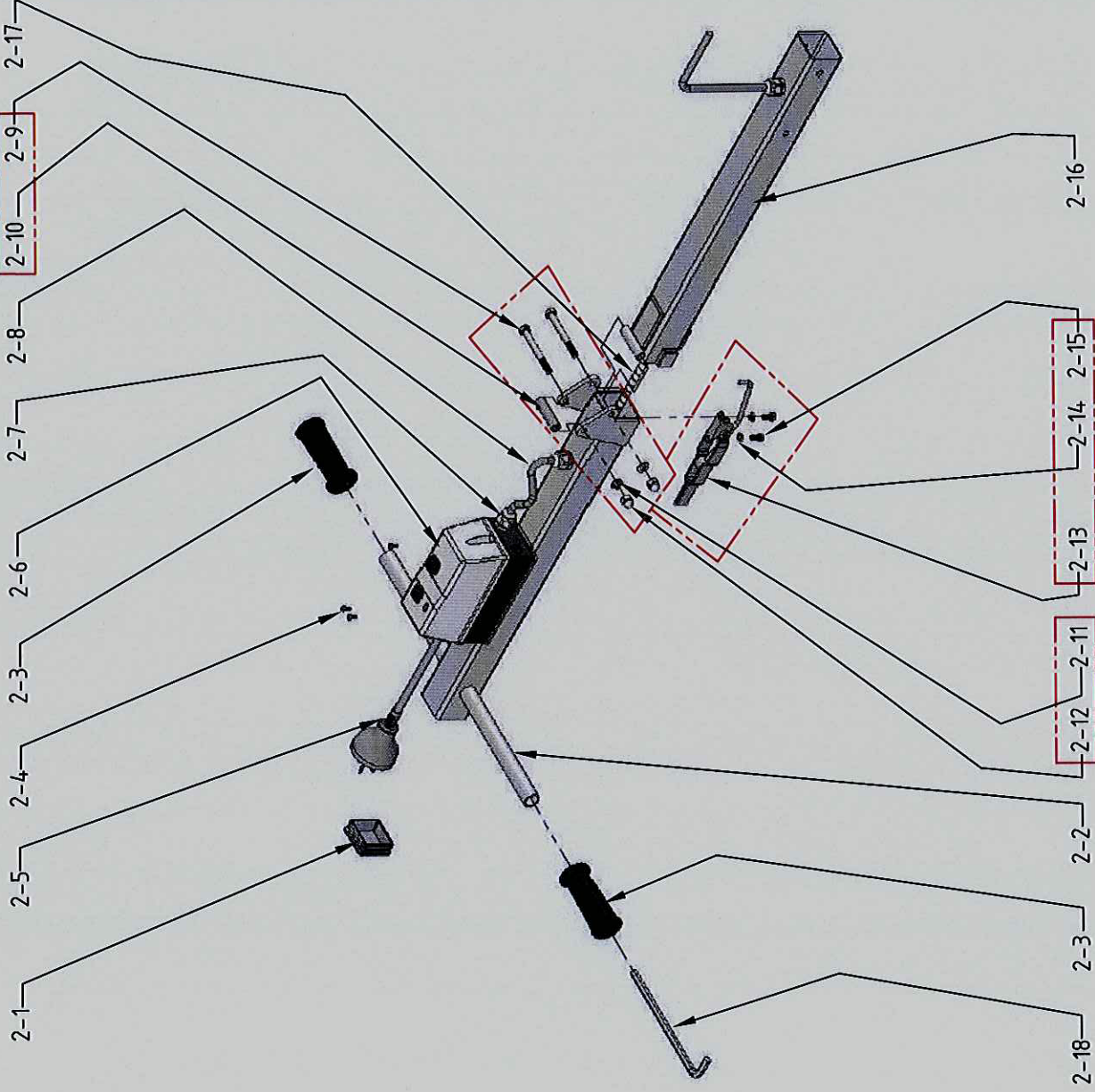


SERVICE SHEET ART-CUB-SS ISSUE 19.03.2012.

FLOOR GRINDER

(ELECTRIC MOTOR, SINGLE PHASE 220-240V,
50HZ, 12.6A, 2.2KW)

PART NO.
ART-CUB



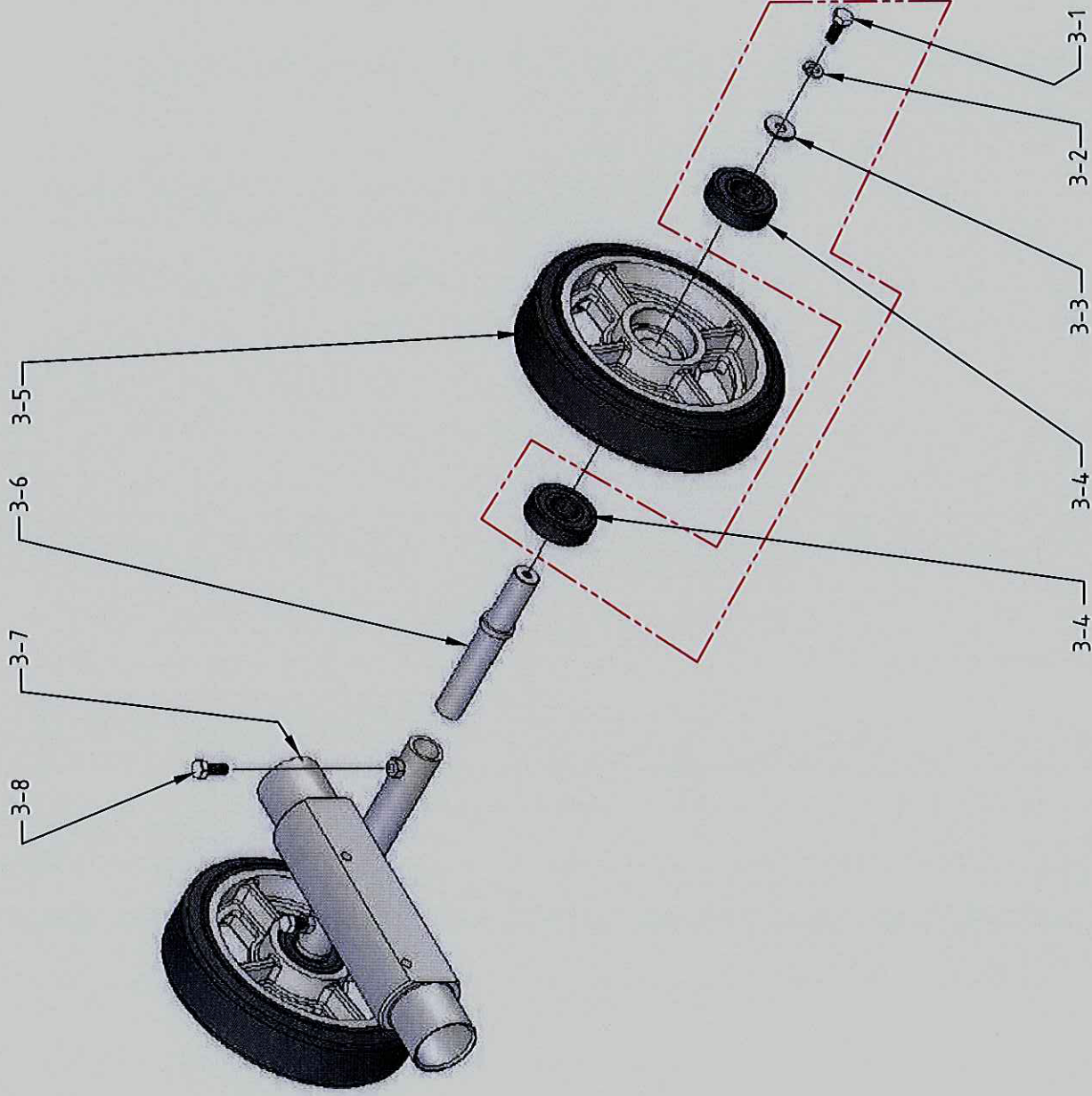


SERVICE SHEET ART-CUB-SS ISSUE 19.03.2012.

FLOOR GRINDER

(ELECTRIC MOTOR, SINGLE PHASE 220-240V,
50HZ, 12.6A, 2.2KW)

PART NO.
ART-CUB



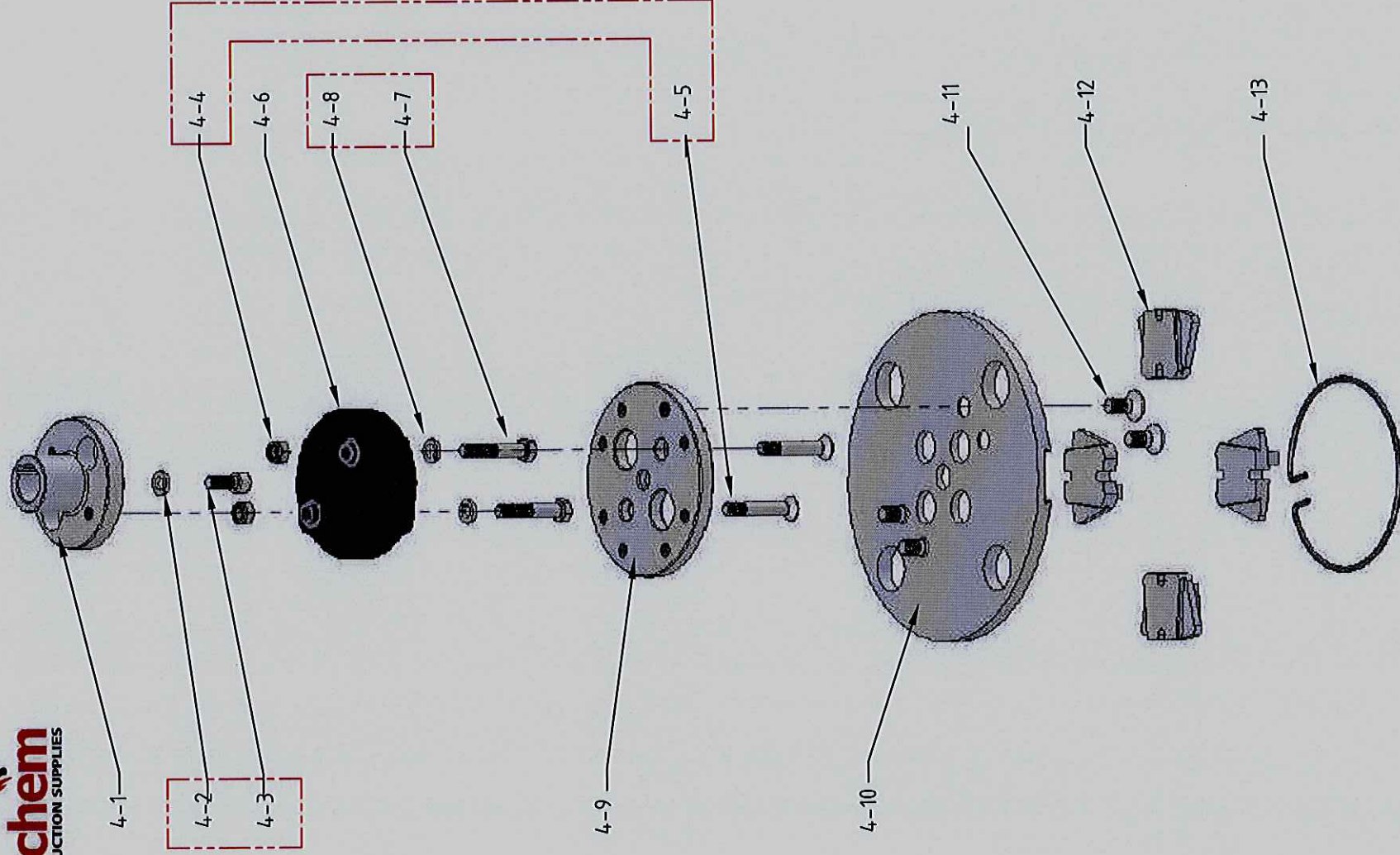


SERVICE SHEET ART-CUB-SS ISSUE 19.03.2012.

FLOOR GRINDER

(ELECTRIC MOTOR, SINGLE PHASE 220-240V,
50HZ, 12.6A, 2.2KW)

PART NO.
ART-CUB





Flextool

SERVICE SHEET ART-CUB. ISS. 19.03.2012.



FLOOR GRINDER SINGLE PHASE PARTS LIST

PART NO.

ART-CUB

ITEM NO.	PART NO.	DESCRIPTION	QUANTITY
----------	----------	-------------	----------

SPARE PARTS

01-1	ART-01-2001	CUB - 2.2KW SINGLE PHASE MOTOR	1
01-1-1	ART-01-2011	CUB - ELEC MOTOR FAN COWLING	1
01-1-2	ART-01-2012	CUB - ELEC MOTOR PLASTIC COOLING FAN	1
01-1-3	ART-01-2007	CUB - ELEC MOTOR CAPACITOR BOX COMPLETE	1
01-1-4	ART-01-2009	CUB - ELEC MOTOR START CAPACITOR	1
01-1-5	ART-01-2010	CUB - ELEC MOTOR RUN CAPACITOR	1
01-2	ART-01-2006	CUB - ELEC GLAND FOR STARTER BOX & CHASS	1
01-3	ART-01-1011	CUB - BACK LIFTING HANDLE COMPLETE	1 - Set
01-4		CUB - BACK LIFTING HANDLE	1
01-5		CUB - SPRING WASHER,TANG ENDS	4
		CUB - SCREW, BACK LIFTING HANDLE	4
01-6	ART-01-1010	CUB - FRONT LIFTING HANDLE COMPLETE	1 - Set
01-7		CUB - FRONT LIFTING HANDLE	1
01-8	ART-01-2004	CUB - SCREW, FRONT LIFTING HANDLE	2
01-9	ART-01-1003	CUB - KEY, ELECTRIC MOTOR	1
		CUB - CHASSIS	1
01-10	ART-01-3020	CUB - CHASSIS BOLT SET	1 - Set
01-11		CUB - BOLT, SQUARE NECK	2
01-12		CUB - WASHER	1
01-13		CUB - ADJUSTING HANDLE	1
01-14		CUB - BOLT, HEX HEAD	2
01-15		CUB - PLAIN WASHER	8
		CUB - DOME NUT	3
01-16	ART-01-3006	CUB - ADAPTOR COMPLETE	1 - Set
01-17		CUB - ADAPTOR	1
01-18		CUB - SCREW, HEX HEAD	4
		CUB - SPRING WASHER,TANG ENDS	4
01-19	ART-01-1006	CUB - SHROUD HOUSING	1
01-20	ART-01-1006A	CUB - ALUM WEAR STRIP REMOVABLE COMPLETE	1 - Set
01-21		CUB - SCREW	2
01-22		CUB - SPRING WASHER,TANG ENDS	2
		CUB - ALUMINIUM WEAR STRIP REMOVABLE	1
01-23	ART-01-1006B	CUB - SHROUD PLASTIC WEAR STRIPS COMPLETE	1 - Set
01-24		CUB - SHROUD PLASTIC WEAR STRIPS	2
		CUB - SCREW, PHILIPS RECESS FLAT HEAD	10
01-25	ART-01-3004	CUB - SHROUD BOLT SET	1 - Set
01-26		CUB - BOLT, HEX HEAD	2
		CUB - NUT, HEX	2



SERVICE SHEET ART-CUB. ISS. 19.03.2012.



FLOOR GRINDER
SINGLE PHASE
PARTS LIST

PART NO.

ART-CUB

ITEM NO.	PART NO.	DESCRIPTION	QUANTITY
01-27	ART-01-3012	CUB - FLEX DUCT, SHROUD OUTLET	1
01-28	ART-01-3013	CUB - HOSE CLAMP	2
01-29	ART-01-3022	CUB - WATER KIT COMPLETE	1 - Set
01-30		CUB - WATER VALVE JOINT	1
01-31		CUB - WATER VALVE & CONNECTOR ASSEMBLY	1
		CUB - HOSE NIPPLE, WATER VALVE	1
02-1	ART-01-3003	HANDLE ASSEMBLY	1
02-2	ART-01-1001	CUB - PLASTIC CAP	1
02-3	ART-01-3001	CUB - HANDLE - TOP SECTION	2
02-4	ART-01-3007	CUB - RUBBER HAND GRIP	4
02-5	ART-01-2005	CUB - SCREW, PAN HEAD	1
02-6	ART-01-2002	CUB - 2MTR PLUGGED LEAD	1
02-7	ART-01-2006	CUB - STARTER BOX CW INT SWITCHES	1
02-8	ART-01-2003	CUB - ELEC GLAND FOR STARTER BOX & CHASS	1
		CUB - ELECTRIC CABLE	1
02-9	ART-01-3010	CUB - HANDLE BOLT SET	1 - Set
02-10		CUB - BOLT, HEX	2
02-11		CUB - SPACER	1
02-12		CUB - WASHER, PLAIN	4
		CUB - SCREW, HEX, DOME HEAD	2
02-13	ART-01-3023	CUB - HANDLE LATCH COMPLETE	1 - Set
02-14		CUB - HANDLE LATCH	1
02-15		CUB - SPRING WASHER, TANG ENDS	2
		CUB - BOLT	2
02-16	ART-01-1002	CUB - HANDLE - BASE SECTION	1
02-17	ART-01-3009	CUB - PLASTIC SHEATH	1
02-18	ART-01-3016	CUB - ALLEN KEY	1
03-1	ART-01-3011	WHEEL ASSEMBLY	2 - Sets
03-2		CUB - AXLE BEARING KIT COMPLETE	1
03-3		CUB - SCREW, HEX HEAD	1
03-4		CUB - SPRING WASHER, TANG ENDS	1
		CUB - PLAIN WASHER	2
		CUB - BEARING	2
03-5	ART-01-3002	CUB - 200MM RUBBER WHEEL	2
03-6	ART-01-1005	CUB - WHEEL AXLE	2
03-7	ART-01-1004	CUB - WHEEL AXLE CARRIER	1
03-8	ART-01-3017	CUB - BOLT	2



Flextool

SERVICE SHEET ART-CUB. ISS. 19.03.2012.



FLOOR GRINDER SINGLE PHASE PARTS LIST

PART NO.

ART-CUB

ITEM NO.	PART NO.	DESCRIPTION	QUANTITY
04-1	ART-01-1007	CUB - GRINDING HUB MOTOR ADAPTOR	1
04-2	ART-01-3014	CUB - GRINDING HUB BOLT SET	1 - Set
04-3		CUB - SPRING WASHER, TANG ENDS	1
		CUB- BOLT, HEX HEAD	1
04-4	ART-01-3021	CUB - GRINDING SHOE ADAPT PLATE BOLT SET	1 - Set
04-5		CUB - NUT, HEX	2
		CUB - SCREW, FLAT HEAD	2
04-6	ART-01-1009	CUB - GRINDING HEAD FLEXIBLE COUPLING	1
04-7	ART-01-3015	CUB - GRINDING HD FLEX COUPLING BOLT SET	1 - Set
04-8		CUB - BOLT, HEX HEAD	2
		CUB - SPRING WASHER, TANG ENDS	2
04-9	ART-01-1008A	CUB - GRINDING SHOE ADAPTOR PLATE	1
04-10	CUB-EZPLATE-250	CUB - EZ CHANGE PLATE	1
04-11	ART-01-3018	CUB - SCREW, BACKING PLATE	4
04-12	N/A	QUICK FIT SHOE - REFER TO ATTACHED TABLE	
04-13	ART-01-3005	CUB - SEGMENT RETAINING RING	1



SERVICE SHEET ART-CUB. ISS. 19.03.2012.

PART NO.

FLOOR GRINDER
SINGLE PHASE
PARTS LIST



ART-CUB

ITEM NO. PART NO.

DESCRIPTION QUANTITY

COMPATIBLE ACCESSORIES

BACKING PLATES AND SHOES:

A			
	CUB EZ CHANGE PLATE & SHOES ASSY		1
	CUB EZ CHANGE PLATE, 4-SHOE		1
	QUICK FIT SHOE 16GR WHITE		4
	QUICK FIT SHOE 16GR GREY		4
	QUICK FIT SHOE 20GR WHITE		4
	QUICK FIT SHOE 20GR GREY		4
	QUICK FIT SHOE 20GR BLACK EXTREME		4
	QUICK FIT SHOE 30/40GR WHITE		4
	QUICK FIT SHOE 30/40GR GREY		4
	QUICK FIT SHOE 30/40GR BLACK		4
	QUICK FIT SHOE 30/40GR BLACK EXTREME		4
	QUICK FIT SHOE 50/60GR GREY		4
	QUICK FIT SHOE 80GR WHITE		4
	QUICK FIT SHOE 80GR GREY		4
	QUICK FIT SHOE 100GR WHITE		4
	QUICK FIT SHOE 100GR GREY		4
	QUICK FIT SHOE 100GR BLACK		4
	QUICK FIT SHOE 150GR GREY		4
	QUICK FIT SHOE 300GR GREY		4
	QUICK FIT SHOE PCD-GLUE & RESIN		4
	SEGMENT RETAINING RING		1
	A.3 CUB-EZPLATE-RING		

*NOTE: REFER TO "CUB QUICK FIT SHOE" AND "SELECTION GUIDE - BOND TYPE & GRIT SIZE" ATTACHED FOR DETAILS ON SHOES AND SELECTION.

10 INCH GRINDING PLATES TO SUIT CUB GRINDER:

B*			
	GRINDING PLATE, 10" BLACK, 30/40GR (5-SEG)		1
	GRINDING PLATE, 10" WHITE, 20GR (5-SEG)		1
	GRINDING PLATE, 10" WHITE, 30/40GR (5-SEG)		1
	GRINDING PLATE, 10" GREY, 30/40GR (5-SEG)		1
	GRINDING PLATE, 10" WHITE, 20GR (10-SEG)T 250MM		1
	GRINDING PLATE, 10" BLACK, 30/40GR (10-SEG)		1
	GRINDING PLATE, 10" WHITE, 30/40GR (10-SEG)		1
	GRINDING PLATE, 10" GREY, 30/40GR (10-SEG)		1
	GRINDING PLATE, 10" WHITE(S), 30/40GR (20-SEG)		1
	GRINDING PLATE, 10" GREY 30/40GR (20-SEG)		1
	GRINDING PLATE, 10" BLACK 30/40GR (20-SEG)		1
	GRINDING PLATE, 10" WHITE 30/40GR (20-SEG)		1
	GRINDING PLATE, 10" WHITE, 30/40GR (20-SEG)		1

*NOTE: REFER TO "10 INCH GRINDING PLATES & RECOMMENDED USE" ATTACHED FOR DETAILS ON GRINDING PLATES AND SELECTION.



Flextool

SERVICE SHEET ART-CUB. ISS. 19.03.2012.

ITEM NO. | PART NO.



FLOOR GRINDER
SINGLE PHASE
PARTS LIST

PART NO.

ART-CUB

QUANTITY

COMPLETE ASSEMBLIES / KITS.

ART-01-1011	CUB - BACK LIFTING HANDLE COMPLETE	1 - Set
ART-01-1010	CUB - FRONT LIFTING HANDLE COMPLETE	1 - Set
ART-01-3020	CUB - CHASSIS BOLT SET	1 - Set
ART-01-3006	CUB - ADAPTOR COMPLETE	1 - Set
ART-01-1006A	CUB - ALUM WEAR STRIP REMOVABLE COMPLETE	1 - Set
ART-01-1006B	CUB - SHROUD PLASTIC WEAR STRIPS COMPLETE	1 - Set
ART-01-3004	CUB - SHROUD BOLT SET	1 - Set
ART-01-3022	CUB - WATER KIT COMPLETE	1 - Set
ART-01-3010	CUB - HANDLE BOLT SET	1 - Set
ART-01-3023	CUB - HANDLE LATCH COMPLETE	1 - Set
ART-01-3011	CUB - AXLE BEARING KIT COMPLETE	2 - Sets
ART-01-3014	CUB - GRINDING HUB BOLT SET	1 - Set
ART-01-3021	CUB - GRINDING SHOE ADAPT PLATE BOLT SET	1 - Set
ART-01-3015	CUB - GRINDING HD FLEX COUPLING BOLT SET	1 - Set

SPECIFICATION

PART NO.	ART-CUB
MOTOR	2.2kW, 1450r/min, CMG MTC Series, Single Phase
MOTOR STANDARD	IEC60034, AS/NZS 1359
MOTOR VOLTAGE	220V - 240V AC, 50Hz
PLATE SPEED	1450 R.P.M.
PLATE TYPE	Quick Fit Shoes & 10" Standard Grinding Plates
WATER KIT FITTED	YES
VACUUM PORT	DIA.51MM
UNIT WEIGHT	46Kg



SERVICE SHEET ART-CUB. ISS. 19.03.2012.

ITEM NO. | PART NO.



FLOOR GRINDER
SINGLE PHASE
PARTS LIST

PART NO.

ART-CUB

DESCRIPTION

QUANTITY

10 INCH GRINDING PLATES & RECOMMENDED USE

Grinding Plate 10"

10 inch diamond grinding plates available with 5, 10 and 20 segments with three different bond types available. 5 segment plates are ideal for fast aggressive grinding of concrete along with removal of hard painted coatings. 10 segment plates are ideal for general grinding of concrete where both speed of grind and life of the grinding plate are a consideration. 20 segment plates are a long lasting grinding plate for general grinding of concrete where life is the most important factor. Also very suitable for grinding uneven joins of concrete where tripping hazards are present. Available bond types: Soft, Medium, Hard. Can be used wet or dry

Part Code	Specification	Description
CRM-1005THC	250x5x10x10x40	GRINDING PLATE 10" WHITE 30/40GR (5-SEG)
CRM-1005TMC	250x5x10x10x40	GRINDING PLATE 10" GREY 30/40GR (5-SEG)
CRM-1005TABE	250x5x10x10x40	GRINDING PLATE 10" BLACK 30/40GR (5-SEG)
CRM-1005TG20	250x5x10x10x40	GRINDING PLATE 10" WHITE 20GR (5-SEG)
CRM-1010THC	250x10x10x10x40	GRINDING PLATE 10" WHITE 30/40GR (10-SEG)
CRM-1010TMC	250x10x10x10x40	GRINDING PLATE 10" GREY 30/40GR (10-SEG)
CRM-1010TAB	250x10x10x10x40	GRINDING PLATE 10" BLACK 30/40GR (10-SEG)
CRM-1010G20	250x10x10x10x40	GRINDING PLATE 10" WHITE 20GR (10-SEG)
CRM-1020THC	250x20x10x10x40	GRINDING PLATE 10" WHITE 30/40GR (20-SEG)
CRM-1020SHC	250x20x10x10x40	GRINDING PLATE 10" WHITE(S) 30/40GR (20-SEG)
CRM-1020TMC	250x20x10x10x40	GRINDING PLATE 10" GREY 30/40GR (20-SEG)
CRM-1020TAB	250x20x10x10x40	GRINDING PLATE 10" BLACK 30/40GR (20-SEG)
CRM-1020TFF	250x20x10x10x40	GRINDING PLATE 10" WHITE 30/40GR (20-SEG)

Notes:

- White = Used for grinding hard concrete
- Grey= Used for grinding medium hardness concrete
- Black = Used for grinding soft/abrasive concrete



Flextool

SERVICE SHEET ART-CUB. ISS. 19.03.2012.

ITEM NO. | PART NO.



FLOOR GRINDER SINGLE PHASE PARTS LIST

PART NO.

ART-CUB

DESCRIPTION

QUANTITY

CUB Quick Fit Shoe

Quick fit 2-segment diamond shoes to suit the CUB Grinder available in three bonds to cover all types of concrete grinding applications. Whether it be very hard concrete or the other end of the scale with soft abrasive concrete, shoes are available from 16 grit through to 300 grit. Poly Crystalline Diamond (PCD) shoes also available for removal of glues and epoxies which are excessively built up on concrete surfaces. Softer type "chewy" materials are no match for these PCD shoes. Available bond types: Soft, Medium, Hard. Can be used wet or dry.

Part Code	Specification	Description
CUB-EZPLATE-250		CUB EZ CHANGE PLATE
QFSHOE-HC16	80x2x10x10x40	QUICK FIT SHOE 16GR WHITE
QFSHOE-MC16	80x2x10x10x40	QUICK FIT SHOE 16GR GREY
QFSHOE-HC20	80x2x10x10x40	QUICK FIT SHOE 20GR WHITE
QFSHOE-MC20	80x2x10x10x40	QUICK FIT SHOE 20GR GREY
QFSHOE-ABE20	80x2x10x10x40	QUICK FIT SHOE 20GR BLACK EXTREME
QFSHOE-HC40	80x2x10x10x40	QUICK FIT SHOE 30/40GR WHITE
QFSHOE-MC40	80x2x10x10x40	QUICK FIT SHOE 30/40GR GREY
QFSHOE-AB40	80x2x10x10x40	QUICK FIT SHOE 30/40GR BLACK
QFSHOE-ABE40	80x2x10x10x40	QUICK FIT SHOE 30/40GR BLACK EXTREME
QFSHOE-MC50	80x2x10x10x40	QUICK FIT SHOE 50/60GR GREY
QFSHOE-HC80	80x2x10x10x40	QUICK FIT SHOE 80GR WHITE
QFSHOE-MC80	80x2x10x10x40	QUICK FIT SHOE 80GR GREY
QFSHOE-HC100	80x2x10x10x40	QUICK FIT SHOE 100GR WHITE
QFSHOE-MC100	80x2x10x10x40	QUICK FIT SHOE 100GR GREY
QFSHOE-ABE100	80x2x10x10x40	QUICK FIT SHOE 100GR BLACK
QFSHOE-MC150	80x2x10x10x40	QUICK FIT SHOE 150GR GREY
QFSHOE-MC300	80x2x10x10x40	QUICK FIT SHOE 300GR GREY
QFCUB-PCD		QUICK FIT SHOE PCD - GLUE & RESIN



Flextool

SERVICE SHEET ART-CUB. ISS. 19.03.2012.

ITEM NO. PART NO.



FLOOR GRINDER SINGLE PHASE PARTS LIST

PART NO.

ART-CUB

DESCRIPTION

QUANTITY

Selection Guide - Bond Type & Grit Size

Product Code	Description / Use
VHC10	VERY COARSE, RAPID REMOVAL OF ULTRA HARD CONCRETE (SOFTTEST BOND)
VHC20	VERY COARSE, RAPID REMOVAL OF ULTRA HARD CONCRETE (SOFTTEST BOND)
HC16	VERY COARSE, RAPID REMOVAL OF HARD CONCRETE
MC16	VERY COARSE, RAPID REMOVAL OF MEDIUM HARDNESS CONCRETE
HC20	COARSE, RAPID REMOVAL OF HARD CONCRETE
MC20	COARSE, RAPID REMOVAL OF MEDIUM HARDNESS CONCRETE
VHC40	MEDIUM REMOVAL, FINER FINISH OF ULTRA HARD CONCRETE (SOFTTEST BOND)
HC40	MEDIUM REMOVAL, FINER FINISH OF HARD CONCRETE
MC40	MEDIUM REMOVAL, FINER FINISH OF MEDIUM HARDNESS CONCRETE
AB40	MEDIUM REMOVAL, FINER FINISH OF ABRASIVE OR GREEN CONCRETE
ABE40	MEDIUM REMOVAL, FINER FINISH OF VERY ABRASIVE OR FRESHLY LAID CONCRETE
ABE20	COARSE, RAPID REMOVAL OF VERY ABRASIVE OR FRESHLY LAID CONCRETE
HC80	FINE GRINDING, SCRATCH REMOVAL OF HARD CONCRETE
MC80	FINE GRINDING, SCRATCH REMOVAL OF MEDIUM HARDNESS CONCRETE
HC100	FINE GRINDING, SCRATCH REMOVAL OF HARD CONCRETE
MC100	FINE GRINDING, SCRATCH REMOVAL OF MEDIUM HARDNESS CONCRETE
ABE100	FINE GRINDING, SCRATCH REMOVAL OF VERY ABRASIVE OR FRESHLY LAID CONCRETE
MC150	FINE GRINDING, SCRATCH REMOVAL OF MEDIUM TO HARD CONCRETE
MC300	FINE GRINDING, SCRATCH REMOVAL OF MEDIUM TO HARD CONCRETE
PCD	REMOVAL OF HIGH-BUILD GLUES AND EXPOXY'S