

SPARE PARTS

**CUBE+ HYBRID
8,4m 4x150W LED**

CUBE+ HYBRID 8,4m 4x150W LED

INDEX

1.	SPARE PARTS	5
1.1	COMMAND PANEL	5
1.2	COMMAND PANEL BOX	7
1.3	HYDRAULIC COMPONENTS	9
1.4	HYDRAULIC CONNECTION	10
1.5	FUEL TANK AND FORKING BASE	11
1.6	BASE	13
1.7	ENGINE/ALTERNATOR SUPPORT	15
1.8	RECHARGEABLE BATTERIES EV506A TYPE AND INVERTER	17
1.9	RECHARGEABLE BATTERIES AGM EVGC6A-A AM OR AGM EVGC6A-A F10-M8 TYPE AND INVERTER	19
1.10	SILENCER	21
1.11	CANOPY	22
1.12	DOORS	24
1.13	TELESCOPIC MAST (COLD GALVANIZED VERSION)	26
1.14	TELESCOPIC MAST (DIP GALVANIZED DROP VERSION)	28
1.15	FLOODLIGHTS GROUP	30
1.16	ALTERNATOR	31
1.17	ENGINE	32
1.18	EARTHING ROD (ON REQUEST)	33
1.19	BOX DOCUMENT (ON REQUEST)	34
1.20	STICKERS	35

CUBE+ HYBRID 8,4m 4x150W LED

GB - SPARE PARTS ORDER

Please be prepared to provide the following information when ordering spare parts:

- **Model**
- **Serial number**
- **Code and quantity.**

NOTE: Codes of painted parts in colors not listed must be specified when ordering (ending with [-CV] instead of [-V])

F - COMMANDES DE PIÈCES DÉTACHÉES

Pour commander les pièces détachées, toujours fournir:

- **modèle**
- **référence**
- **quantité de la pièce commandée**

NOTE: les références de pièces peintes d'une couleur non standard doivent être précisées avant la commande (la terminaison sera [-CV] au lieu de [-V])

D - ERSATZTEILE BESTELLEN

Halten Sie bei der Bestellung von Ersatzteilen folgende Informationen bereit:

- **modell**
- **Seriennummer**
- **Code und Menge**

HINWEIS: Die Teilecodes, die in anderen als den aufgelisteten Farben lackiert sind, müssen in der Reihenfolge angegeben werden (das letzte ist [-CV] anstelle von [-V])

NL - ONDERBELEN BESTELLEN

Bij het bestellen van reserve onderdelen verzoeken wij u de volgende gegevens te vermelden:

- **Machine model**
- **Machine serienummer**
- **Artikelnummer en hoeveelheid onderdelen**

Attentie: artikelnummers van onderdelen in een kleur die afwijkt van de standaard, moeten worden gespecificeerd (eindigt met [-CV] in plaats van [-V])

I - ORDINE DEI RICAMBI

In caso di ordine di ricambi siate pronti a fornire le seguenti informazioni:

- **Modello**
- **Numero di serie**
- **Codice e quantità**

NOTA: i codici di parti verniciate in colori diversi da quelli elencati devono essere specificati in fase di ordine (il finale sarà [-CV] invece di [-V])

E - PEDIDO DE REPUESTOS

Cuando solicite piezas de repuesto, prepárese para proporcionar la siguiente información:

- **Modelo**
- **Número de serie**
- **Código y cantidad**

NOTA: los códigos de partes pintadas en colores distintos a los enumerados deben especificarse en la orden (el final será [-CV] en lugar de [-V])

P - PEDIDO DE PEÇAS DE REPOSIÇÃO

Ao encomendar peças de reposição, esteja pronto para fornecer as seguintes informações:

- **Modelo**
- **Número de série**
- **Código e quantidade**

OBSERVAÇÃO: os códigos de peças pintadas em cores diferentes das listadas devem ser especificados na ordem (a final será [-CV] em vez de [-V])

CUBE+ HYBRID 8,4m 4x150W LED

GENERAC MOBILE PRODUCTS S.r.l.

Via Stazione, 3 bis
27030 Villanova d'Ardenghi (PV)
ITALY

Tel.: +39 0382 567011

Fax: +39 0382 400247

Web site:

<https://www.towerlight.com/>

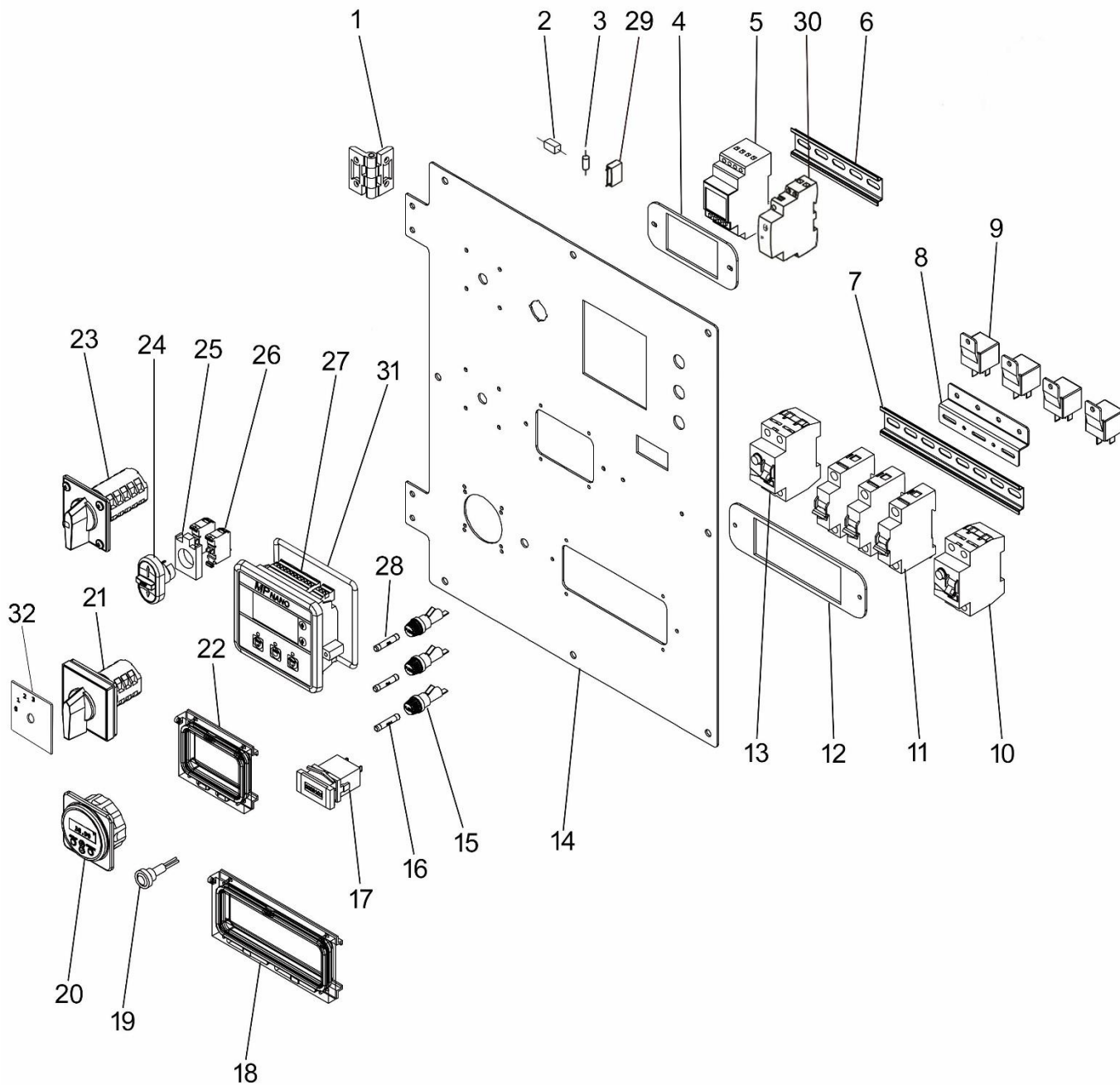
E-mail:

info@towerlight.com

CUBE+ HYBRID 8,4m 4x150W LED

1. SPARE PARTS

1.1 COMMAND PANEL

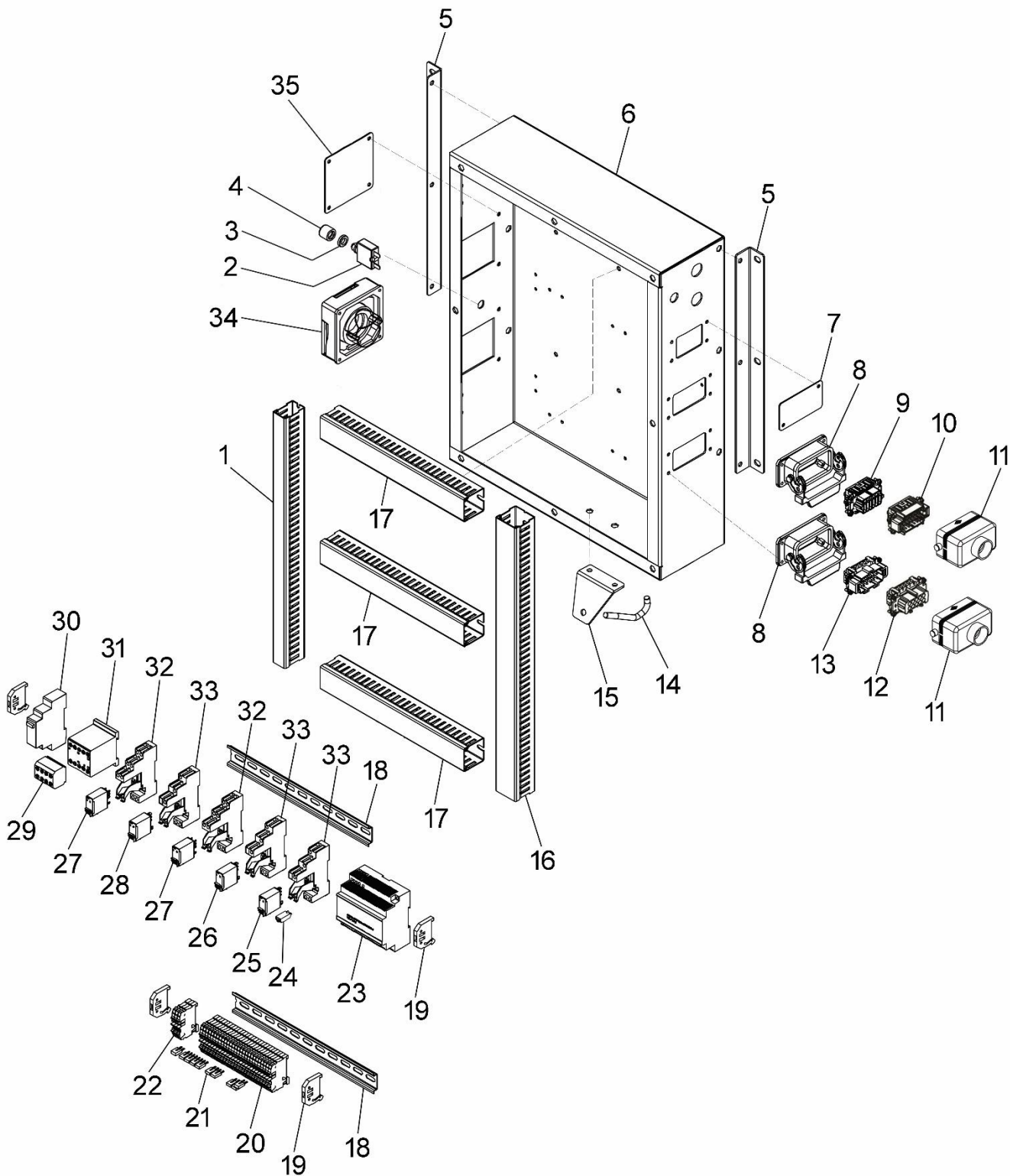


CUBE+ HYBRID 8,4m 4x150W LED

Items	Code	Denomination
1	16406	Hinge
2	12012	100 ohm 5 W resistor
3	12173	1N4007 diode
4	7117-40	Circuit breaker support
5	11966	12 V Finder timer
6	7806-130	Support
7	7806-200	Support
8	16997	Relay support
9	6921	12 V 40 A relay
10	15074	25 A CL.A earth leakage relay
11	7252	6 A (PI 6 kA) 1P circuit breaker
12	7117-48	Circuit breaker support
13	15912	16 A CL.A 30 mA RCBO combined RCD/MCB device
14	17590-01X	Aluminium front plate
15	10046	6.3x32 fuse holder
16	13686	10 A 250 V 6.3x32 fuse
17	6805	230÷240 V 50 Hz hour meter
18	7234	8P Wimex protection
19	7996	12 V red signal lamp
20	16459-01	Battery monitor
20	16459-03	RJ12 network cable for battery monitor
21	12691	4G10-NH-124-U 0-1-2-3 selector
22	10235	4P Wimex protection
23	15718	4G10NH-839-U 1-2-3 20 A switch
24	15073	Up/down pulse button
25	15073-01	Pulse button base
26	15073-02	NO auxiliary contactor pulse button
27 (1)	13691	MPnano control panel
28	15818	2 A 250 V 6.3x32 fuse
29	12767	4,7 µF 100 V capacitor
30	17476	12/24 V 11.31 Finder light sensor
31	13691-01	MPnano control gasket
32	17792	0-1-2-3 label for selector
(1)	Warning	Always specify the serial number machine. (logic must be set according to the configuration of the machine)

CUBE+ HYBRID 8,4m 4x150W LED

1.2 COMMAND PANEL BOX

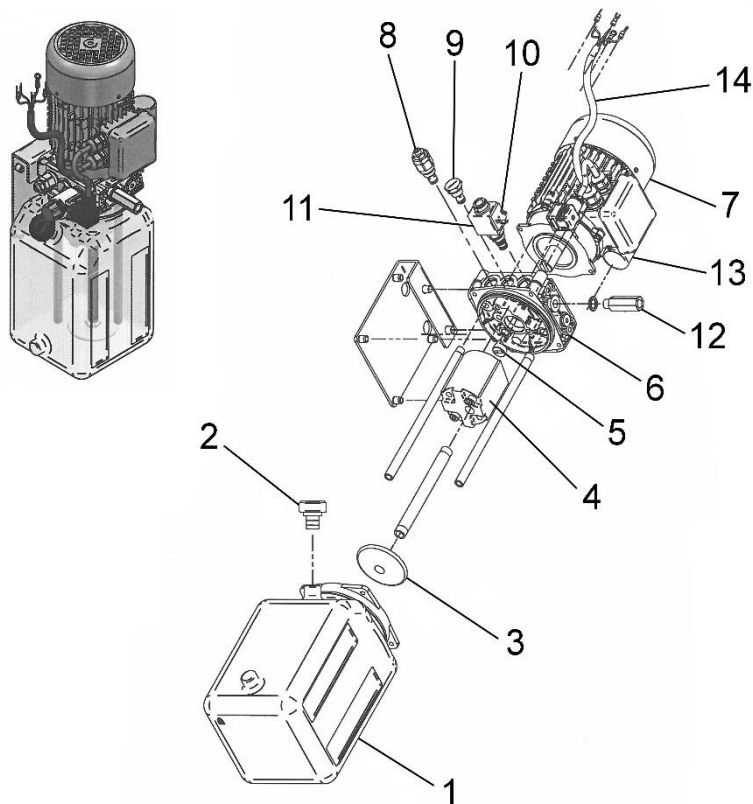


CUBE+ HYBRID 8,4m 4x150W LED

Items	Code	Denomination
1	16326-460	25x40 cable duct
2	6869	10 A circuit breaker
3	6726	Ring for circuit breaker
4	6725	Ruber for circuit breaker
5	16149-73-V	Front box support (V=black painted)
6	17669-V	Front box (V=black painted)
7	16451-V	Cover (V=black painted)
8	13271-10	10/18P side closure box
9	13271-07	18P female terminal board
10	13271-06	18P male terminal board
11	13271-09	10/18 M25 out terminal box
12	13271-03	10P female terminal board
13	13271-02	10P male terminal board
14	17595-V	Cable clamp bracket (V=black painted)
15	6433-04-Z	Hook for cable clamp
16	8327-470	40x40 cable duct
17	8327-285	40x40 cable duct
18	7806-280	Support
19	11327	Stop terminal board
20	16319	2,5 mm ² grey 2 conductor terminal board
21	16318	2,5 mm ² 2 way white terminal board connection
22	16320	2,5 mm ² yellow/green 2 conductor terminal board
23	17115	12 V CC battery charger
24	16069	S86 230 V timer bi-function module
25	16070	1CO 16 A 230 V AC (466182304040) relay
26	15928	1CO 16 A 12 V DC (466190124040) relay
27	15926	2CO 8 A 12 V DC (46529012007A) relay
28	16577	1CO 16 A 12 V DC (466190120040) relay
29	15745	11 BGX10 22 2NO-2NC auxiliary contact
30	13527	20 A 230÷240 V 1NO-1NC switch
31	15744	11BG09 T2 A230 2PNO-2PNC 20 A 230÷240 V AC contactor
32	15925	S46 2C relay base
33	15927	S46 1C relay base
34	16932	10 A 250 V IP66 plug
35	18718-V	Cover (V=black painted)

CUBE+ HYBRID 8,4m 4x150W LED

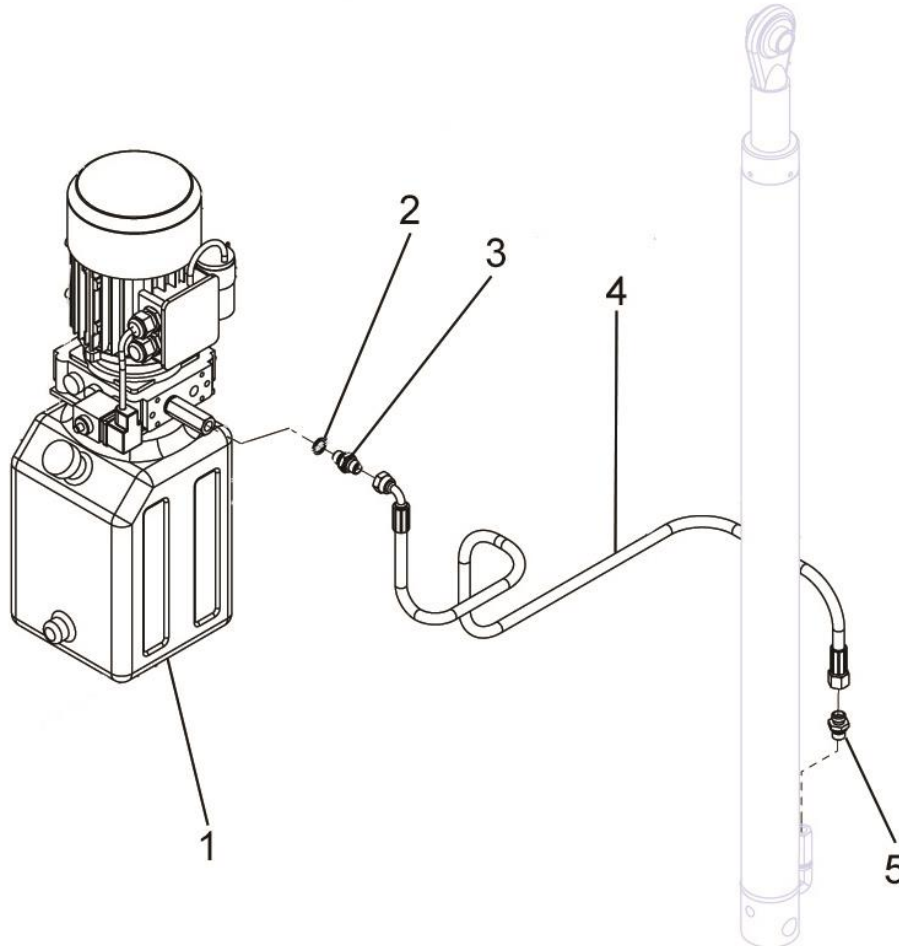
1.3 HYDRAULIC COMPONENTS



Items	Code	Denomination
1-2-3-4-5-6-7-8-9-10-11-12-13-14	17232	1420 rpm 50 Hz 0,55 kw hydraulic gear box assembled
1	56220501B02E	Hydraulic oil tank
2	39G57B000C0C	Hydraulic oil tank cap
3	56233D14D0MP	Group suction and return
4	13B1W2D2BBBX	Gear pump
5	1201PG00330T	Front joint
6	5620121031BR	Valve body
7	42206410D31T	0,55kw 4p. 50 Hz electrical motor with capacitor
8	56203P31900V	Valve of maximum pressure
9	562571L3005E	Non return valve
10	562611L40A09	E08N-20L-S-00 solenoid valve
11	56263610F0BI	220 V coil
12	3392800A020Y	Throttle pipe
13	19786	25µF ±5% capacitor
14	RE-78C00077010D	Connector for solenoid valve with cable complete

CUBE+ HYBRID 8,4m 4x150W LED

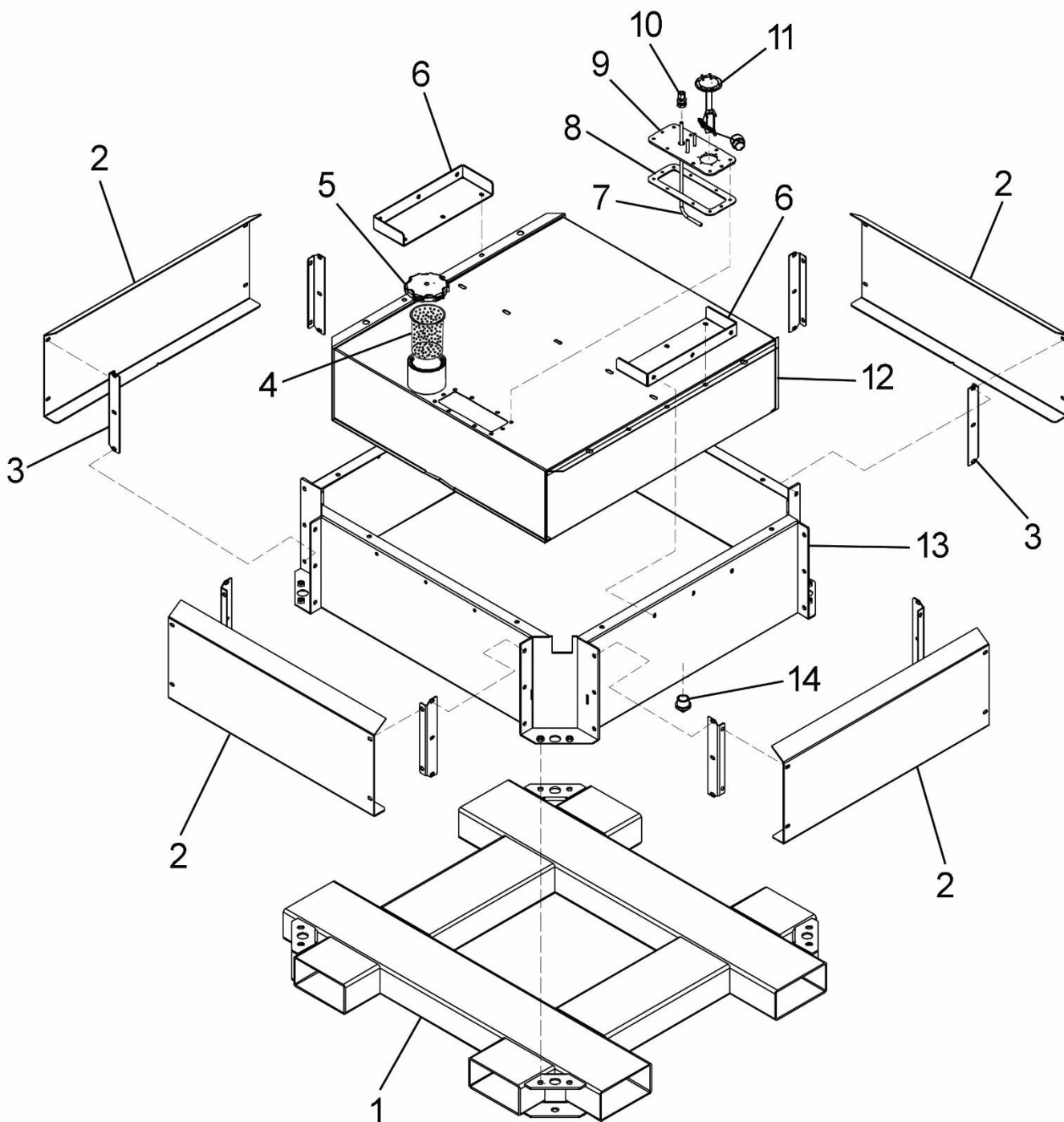
1.4 HYDRAULIC CONNECTION



Items	Code	Denomination
1	17232	1420 rpm 50 Hz 0,55 kw hydraulic gear box assembled
2	7697	1/4" (D.13.5x18x1.5) copper gasket
3	10152	1/4" nipple
4	7792	Hydraulic cylinder tube
5	7793	1/4"M M14x1.5 nipple with gasket

CUBE+ HYBRID 8,4m 4x150W LED

1.5 FUEL TANK AND FORKING BASE

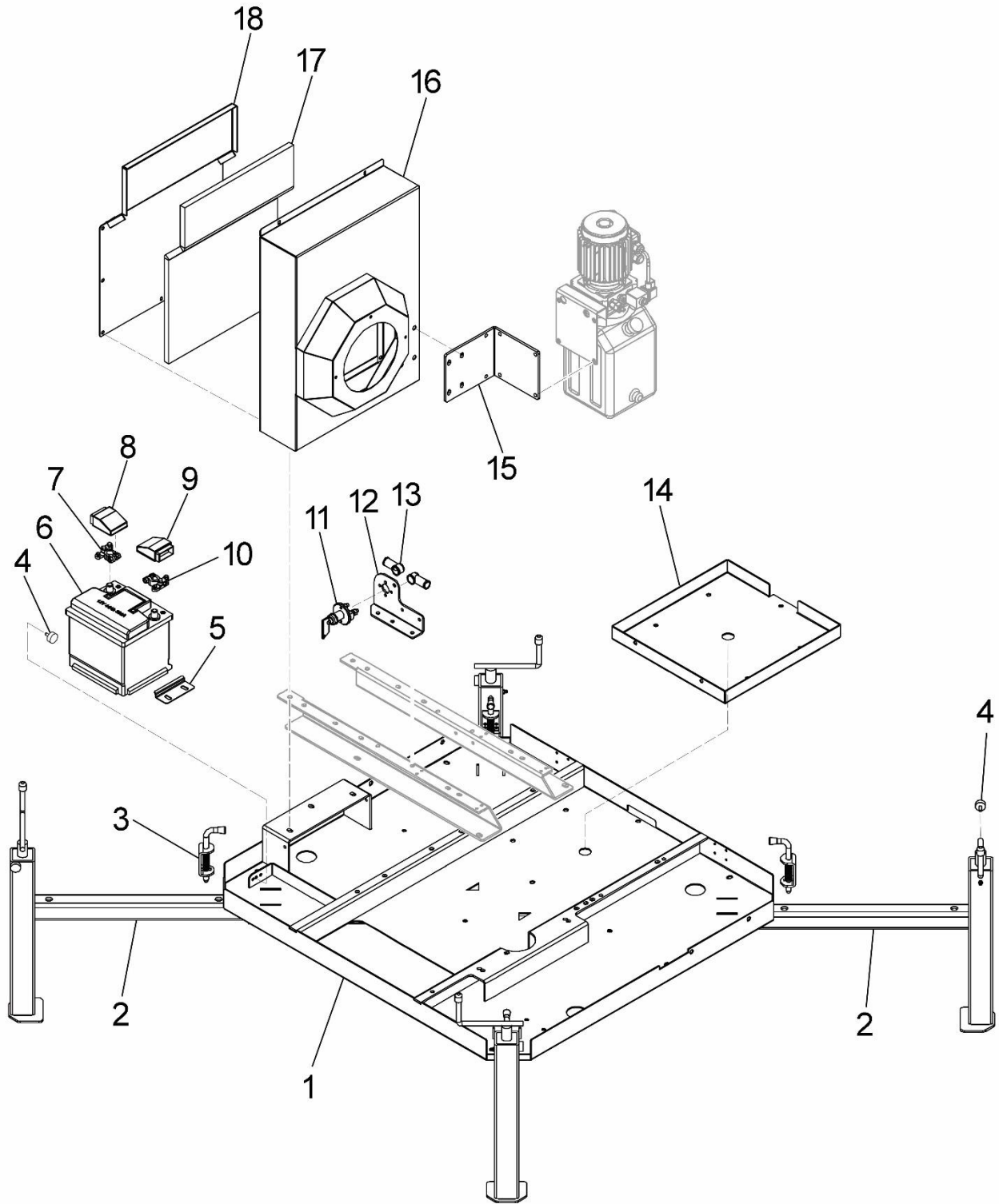


CUBE+ HYBRID 8,4m 4x150W LED

Items	Code	Denomination
1	16149-A-ZC	Plate for transport
2	16149-74-Z	Lower panel
3	16149-75-Z	Lower panel support
4 (1)	10773-01	Fuel filter
5	6906	D.105 fuel tank cap
6	15843-06-V	Fuel tank plate (V=black painted)
7	16204-08	D.8x1 inox pipe for fuel
8	19935	Gasket for plate fuel tank
9	16293-V	Fuel tank cover (V=black painted)
10	16269-01	UMA-GP 8-3/8L fitting
11	12253	Fuel level
12	16149-C-V	Fuel tank (V=black painted)
13	16149-B-V	Bunded tank (V=black painted)
14	10266	1" drain cap
(1)		On request

CUBE+ HYBRID 8,4m 4x150W LED

1.6 BASE



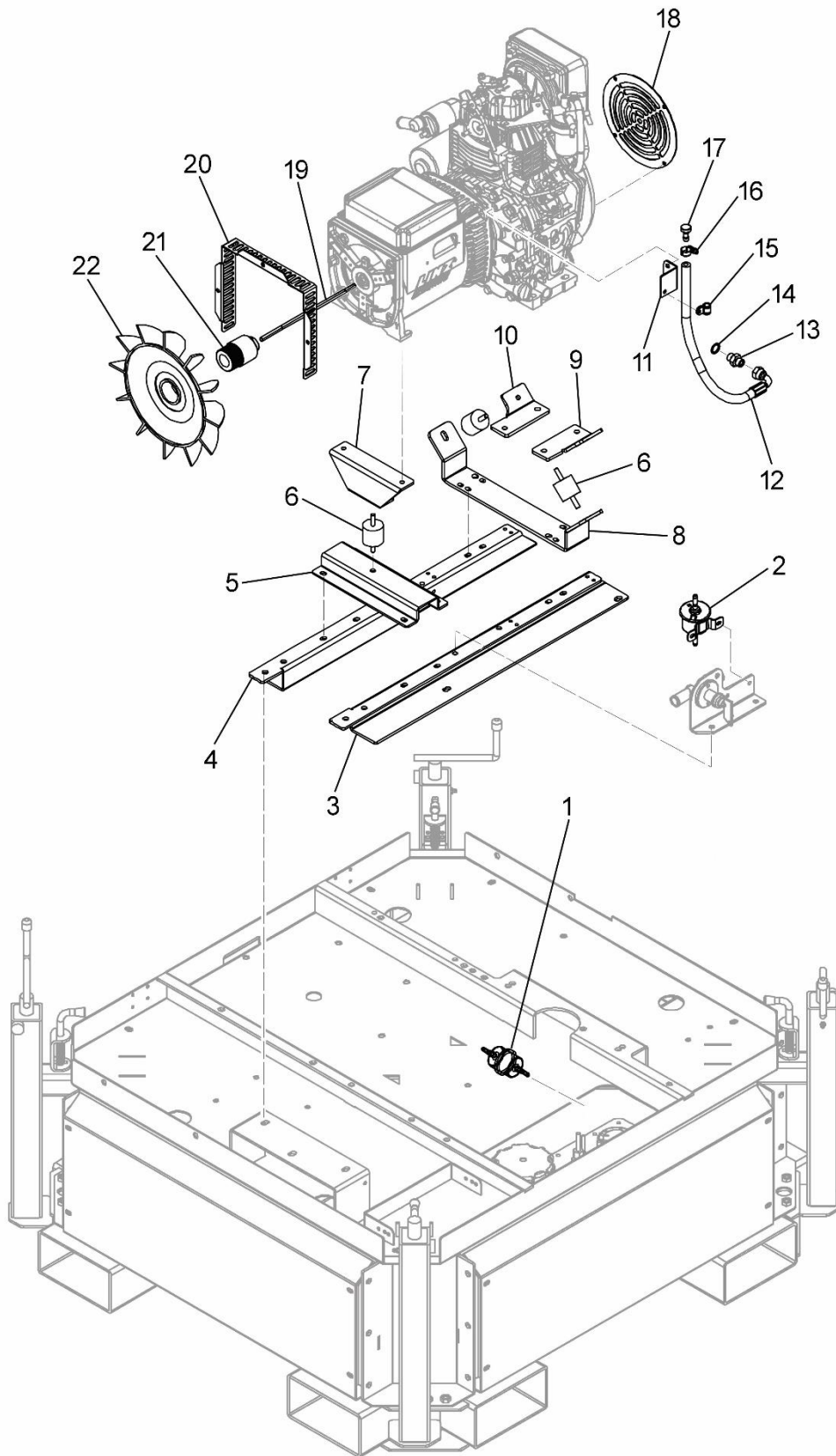
DISCOVER battery
YANMAR ENGINE

CUBE+ HYBRID 8,4m 4x150W LED

Items	Code	Denomination
1	16149-D-V	Generator and mast base (V=black painted)
2	18975-Z	Stabilizer
3	7654	Closing lock pin
4	6943	25x10 1xM6 schock absorber
5	17671-V	Battery plate (V=black painted)
6	6884	12 V 44 Ah battery
7	16494	Battery positive terminal
8	16496	Red cover for battery
9	16497	Black cover for battery
10	16495	Battery negative terminal
11	7672-C	Battery switch assembly
12	16312-25-V	Battery switch and electric pump support (V=black painted)
13	12144	Battery switch rubber protection
14	16149-10-Z	Base for mast
15	16312-23-V	Hydraulic box support (V=black painted)
16	16312-11-V	Air conveyor box (V=black painted)
17	16312-37	Soundproofing panel
18	16312-05-V	Box cover (V=black painted)

CUBE+ HYBRID 8,4m 4x150W LED

1.7 ENGINE/ALTERNATOR SUPPORT

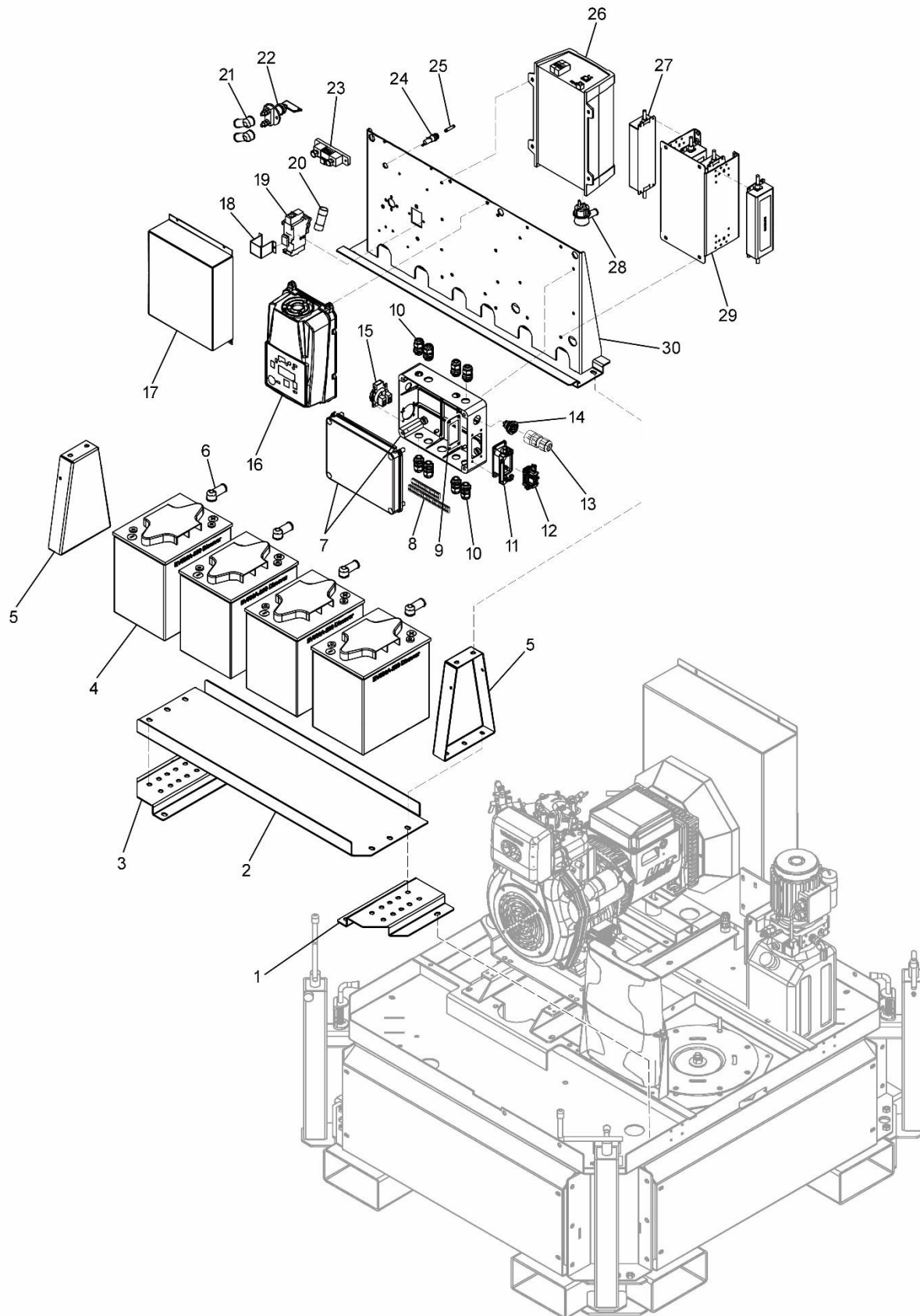


CUBE+ HYBRID 8,4m 4x150W LED

Items	Code	Denomination
1	8028	Fuel pre-filter
2	8176	Fuel electric pump
3	16312-01-SX-V	Left engine/alternator support (V=black painted)
4	16312-01-DX-V	Right engine/alternator support (V=black painted)
5	16312-02-V	Alternator support (V=black painted)
6	6835	40x40 M8x25 shock absorber
7	13804-V	Alternator support (V=black painted)
8	16312-03-V	Engine support (V=black painted)
9	16275-64-SX-V	Left engine support (V=black painted)
10	16275-64-DX-V	Right engine support (V=black painted)
11	12587-V	Draining oil tube support (V=black painted)
12	6834	Oil drain pipe with M16x1,5 rotatable curve
13	6892	M16x1,5 mm nipple
14	6892-1	D. 16x22x1 copper gasket
15	1055	10÷15 RSGU1 clamp
16	6905	10÷20 clamp
17	6926	Oil drain cap
18	17105-V	Engine intake grille (V=black painted)
19	8698	Fan tie rod
20	15147-V	Protection grid (V=black painted)
21	6812	Fan hub
22	6903	Fan

CUBE+ HYBRID 8,4m 4x150W LED

1.8 RECHARGEABLE BATTERIES EV506A TYPE AND INVERTER

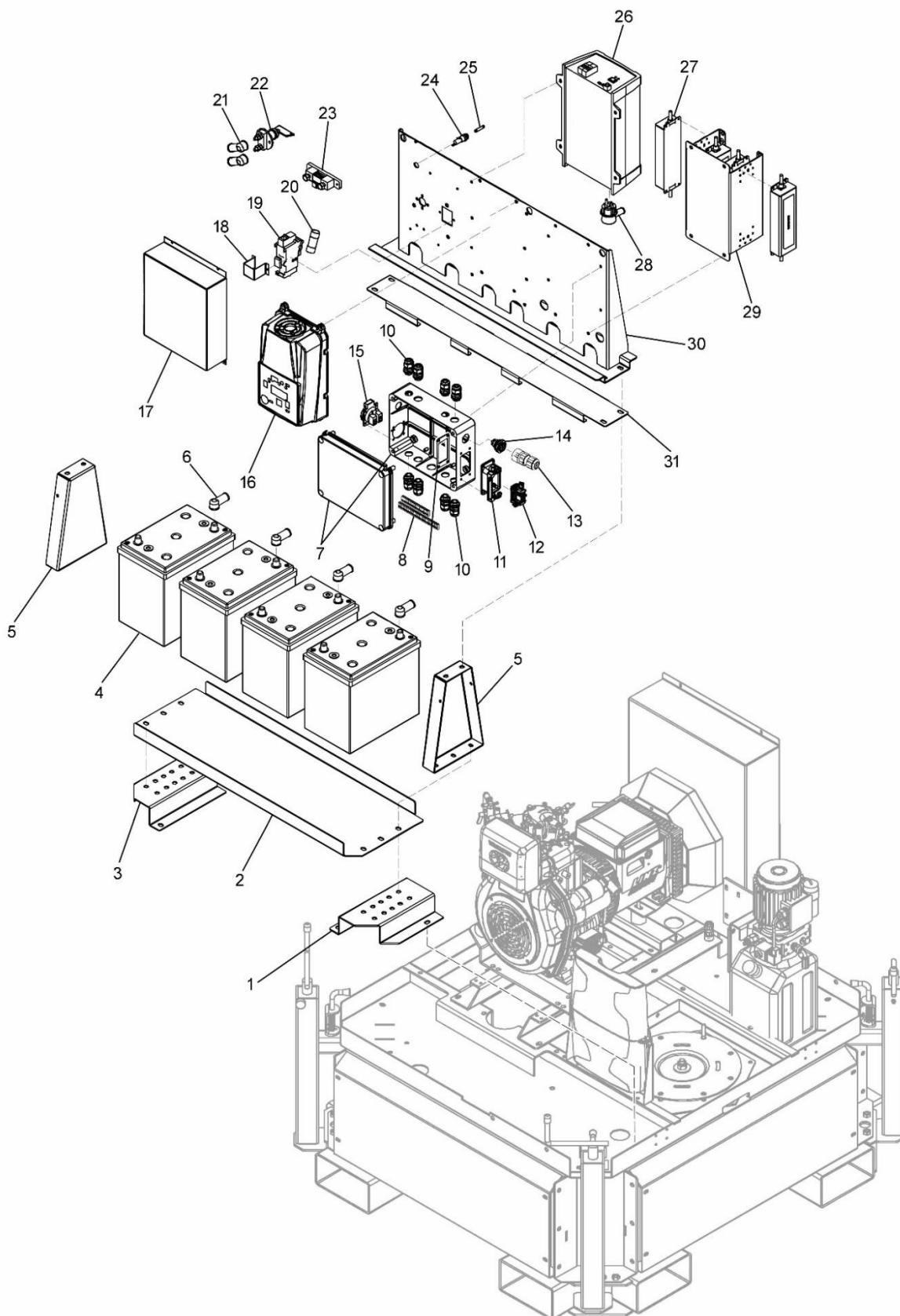


CUBE+ HYBRID 8,4m 4x150W LED

Items	Code	Denomination
1	16312-12-DX-V	Right plate for battery support (V=black painted)
2	16312-13-V	Battery support (V=black painted)
3	16312-12-SX-V	Left plate for battery support (V=black painted)
4	16349	DISCOVER 6 V 230 Ah (EV506A) battery
5	16312-15-V	Plate spacer (V=black painted)
6	12144	Battery rubber protection
7	9777-06	250x195x95 plastic box
8	14668	2 distribution clamp
8	14669	3 distribution clamp
8	14670	5 distribution clamp
9	13271-05	Plate for 10 poles connector
10	7051	PG11 (5÷10 mm) wire holder
11	13271-10	10/18P side closure box
12	13271-03	10P female terminal board
13	16361	4 poles connector
14	16360	4 poles panel connector
15	13524	16 A 250 V schuko socket
16	16593	DISCOVER 24 V electronic battery charge
17	16312-29-V	Charge controller protection (V=black painted)
18	7107	Circuit breaker support
19	16424	22x58 fuse holder
20	16425	80 A 22x58 fuse
21	12144	Battery switch rubber protection
22	7672-C	Battery switch assembly
23	16459-02	500 A 50 mA shunt
24	10046	6.3x32 fuse holder
25	15818	2 A 250 V 6.3x32 fuse
26	17394	24/1200 Phoenix inverter
27	19571	100/305 V AC 150 W 56 V IP67 XLG-150-H-A driver
28	15160	16 A 230/240 V 90° schuko plug
29	16316-V	Driver support (V=black painted)
30	16312-26-V	Inverter/battery charge/driver/ support (V=black painted)

CUBE+ HYBRID 8,4m 4x150W LED

1.9 RECHARGEABLE BATTERIES AGM EVGC6A-A AM OR AGM EVGC6A-A F10-M8 TYPE AND INVERTER

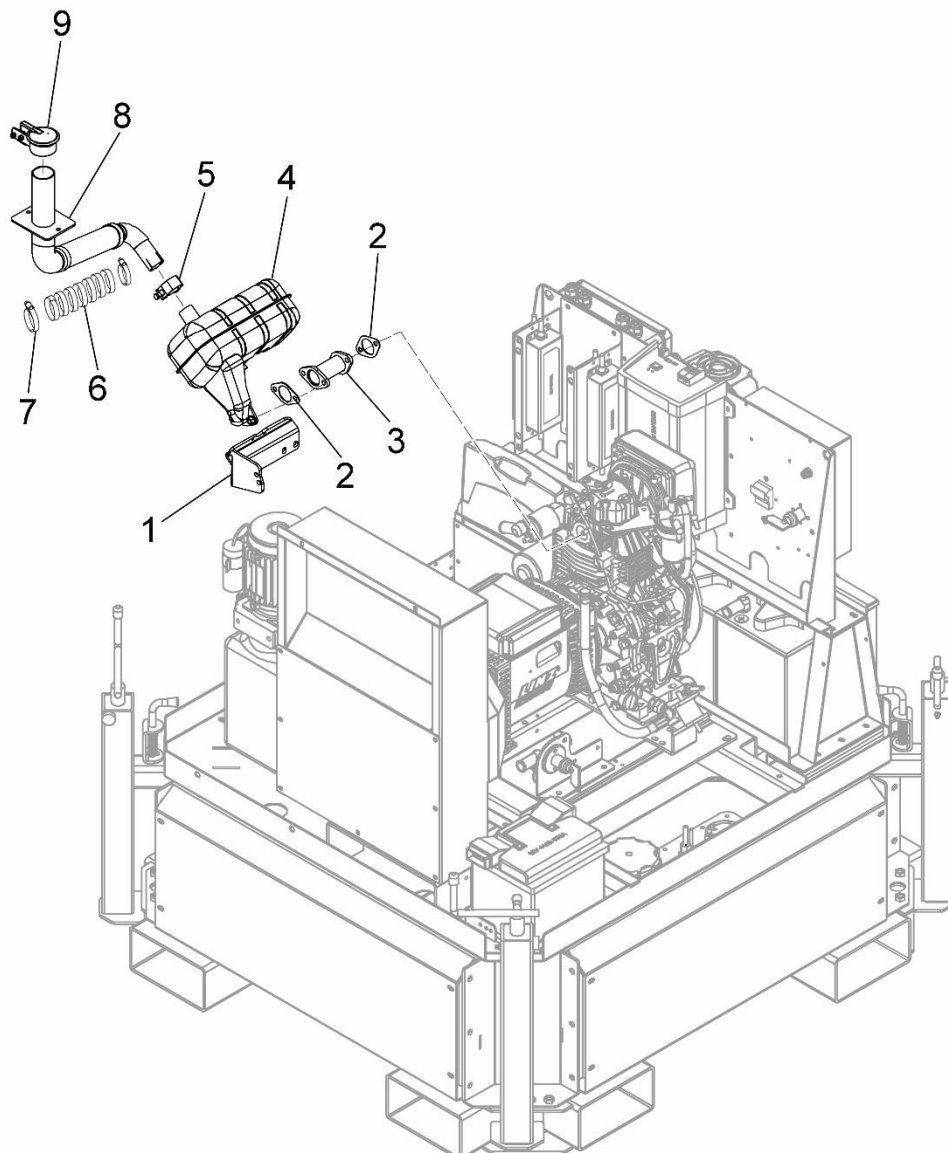


CUBE+ HYBRID 8,4m 4x150W LED

Items	Code	Denomination
1	17587-02-V	Right plate for battery support (V=black painted)
2	17587-V	Battery support (V=black painted)
3	17587-03-V	Left plate for battery support (V=black painted)
4	16592	DISCOVER 6 V 230 Ah (AGM EVGC6A-A AM) battery
4	16591	DISCOVER 6 V 230 Ah (AGM EVGC6A-A F10-M8) battery
5	16312-15-V	Plate spacer (V=black painted)
6	12144	Battery rubber protection
7	9777-06	250x195x95 plastic box
8	14668	2 distribution clamp
8	14669	3 distribution clamp
8	14670	5 distribution clamp
9	13271-05	Plate for 10 poles connector
10	7051	PG11 (5÷10 mm) wire holder
11	13271-10	10/18P side closure box
12	13271-03	10P female terminal board
13	16361	4 poles connector
14	16360	4 poles panel connector
15	13524	16 A 250 V schuko socket
16	16593	DISCOVER 24 V electronic battery charge
17	16312-29-V	Charge controller protection (V=black painted)
18	7107	Circuit breaker support
19	16424	22x58 fuse holder
20	16425	80 A 22x58 fuse
21	12144	Battery switch rubber protection
22	7672-C	Battery switch assembly
23	16459-02	500 A 50 mA shunt
24	10046	6.3x32 fuse holder
25	15818	2 A 250 V 6.3x32 fuse
26	17394	24/1200 Phoenix inverter
27	19571	100/305 V AC 150 W 56 V IP67 XLG-150-H-A driver
28	15160	16 A 230/240 V 90° schuko plug
29	16316-V	Driver support (V=black painted)
30	16312-26-V	Inverter/battery charge/driver/ support (V=black painted)
31	17587-01-V	Plate for battery (V=black painted)

CUBE+ HYBRID 8,4m 4x150W LED

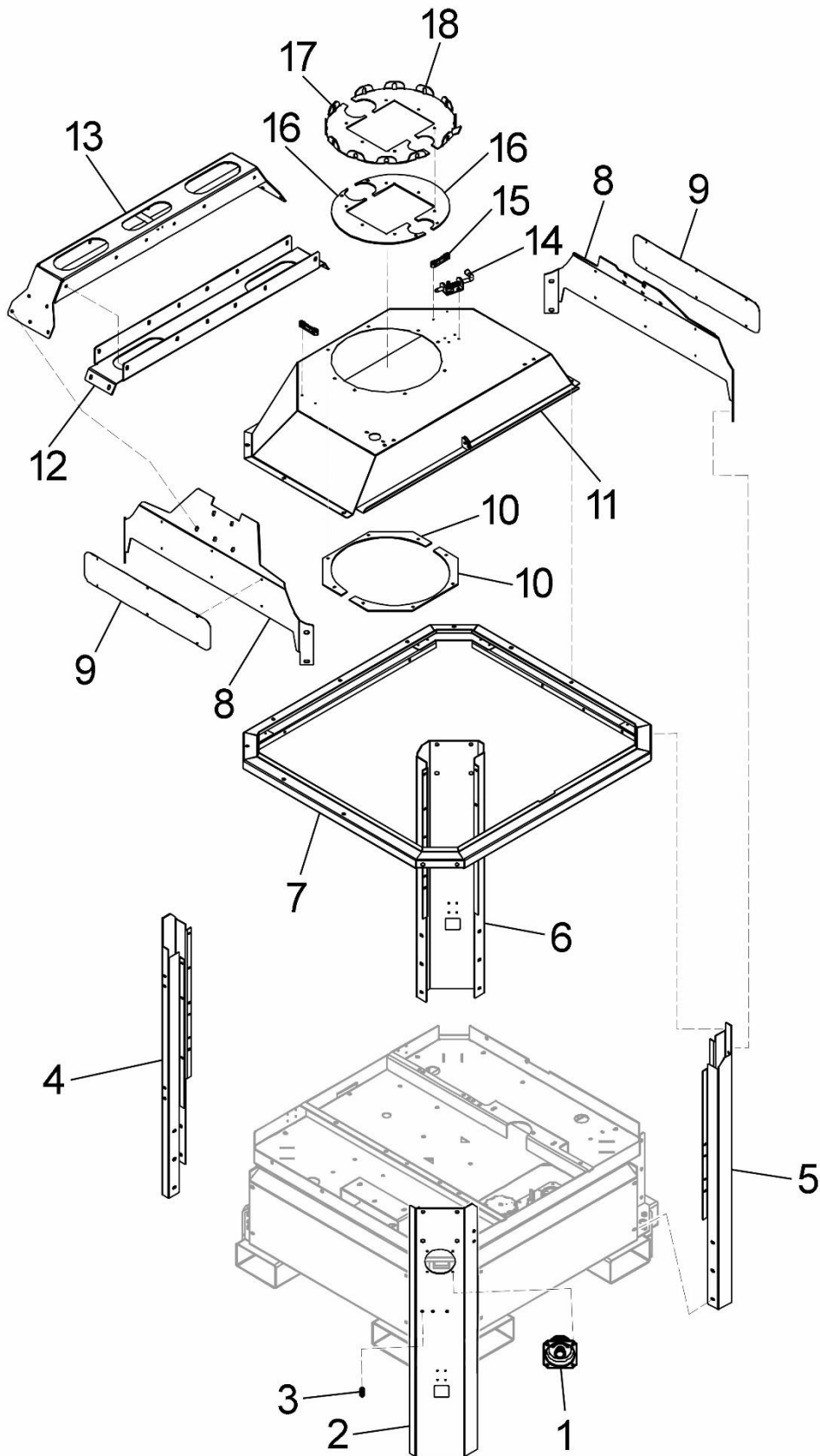
1.10 SILENCER



Items	Code	Denomination
1	16312-30-V	Silencer support (V=black painted)
2	16779	Packing for silencer
3	16312-36-V	Silencer extension (V=black painted)
4	16885	Silencer
5	15449	29÷31 clamp
6-7-8	16312-38-R	Silencer extension complete
6	6899-2500	Glass fiber
7	7693	40÷60 clamp
8	16312-38-V	Silencer extension (V=black painted)
9	7324	Rain cover for silencer

CUBE+ HYBRID 8,4m 4x150W LED

1.11 CANOPY

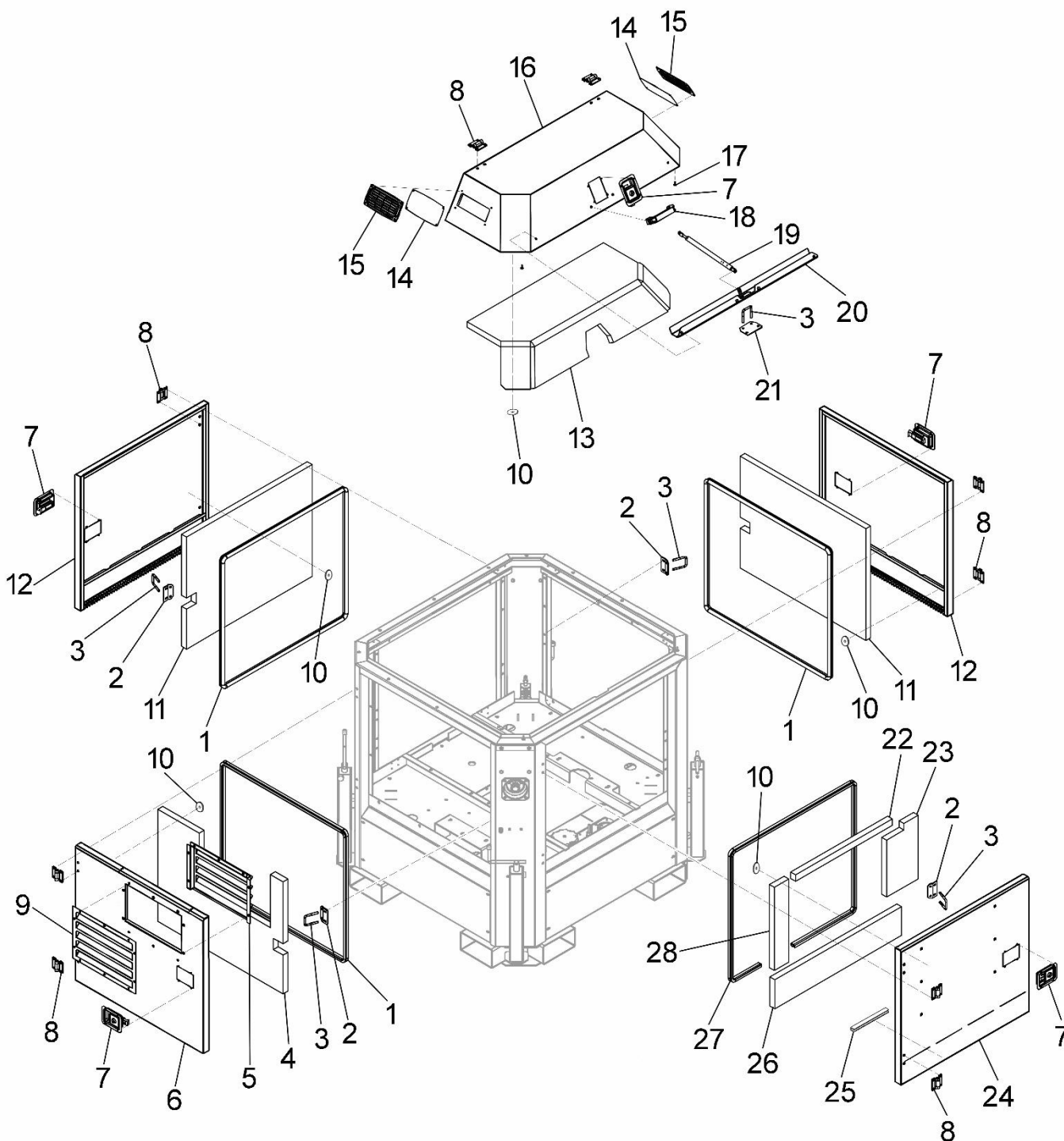


CUBE+ HYBRID 8,4m 4x150W LED

Items	Code	Denomination
1	15664	Push button complete
2	16149-64-Z	Angular plate front/alternator side
3	6840	Main Earth Terminal
4	16149-63-Z	Angular plate mast/driver side
5	16149-61-Z	Angular pale front/engine side
6	16149-62-Z	Angular plate mast/hydraulic box side
7	16149-E-Z	Upper frame
8	15573-Z	Side plate
9	12905-42-V	Generac name plate (V=white painted)
9 (1)	12905-xx	Name plate (xx specify the name) (V=white painted)
10	11906-06-V	Mast guide flange (V=black painted)
11	16312-31-V	Top cover (V=black painted)
12	14748-Z	Lifting frame reinforcement
13	14746-A-Z	Middle lifting frame
14	8178	Closing look pin
15	7237	Spirit level
16	9858-Z	Mast guide flange
17	9901-2-Z	Mast guide flange
18	9901-1-Z	Mast guide flange with blocking
(1)		On request

CUBE+ HYBRID 8,4m 4x150W LED

1.12 DOORS

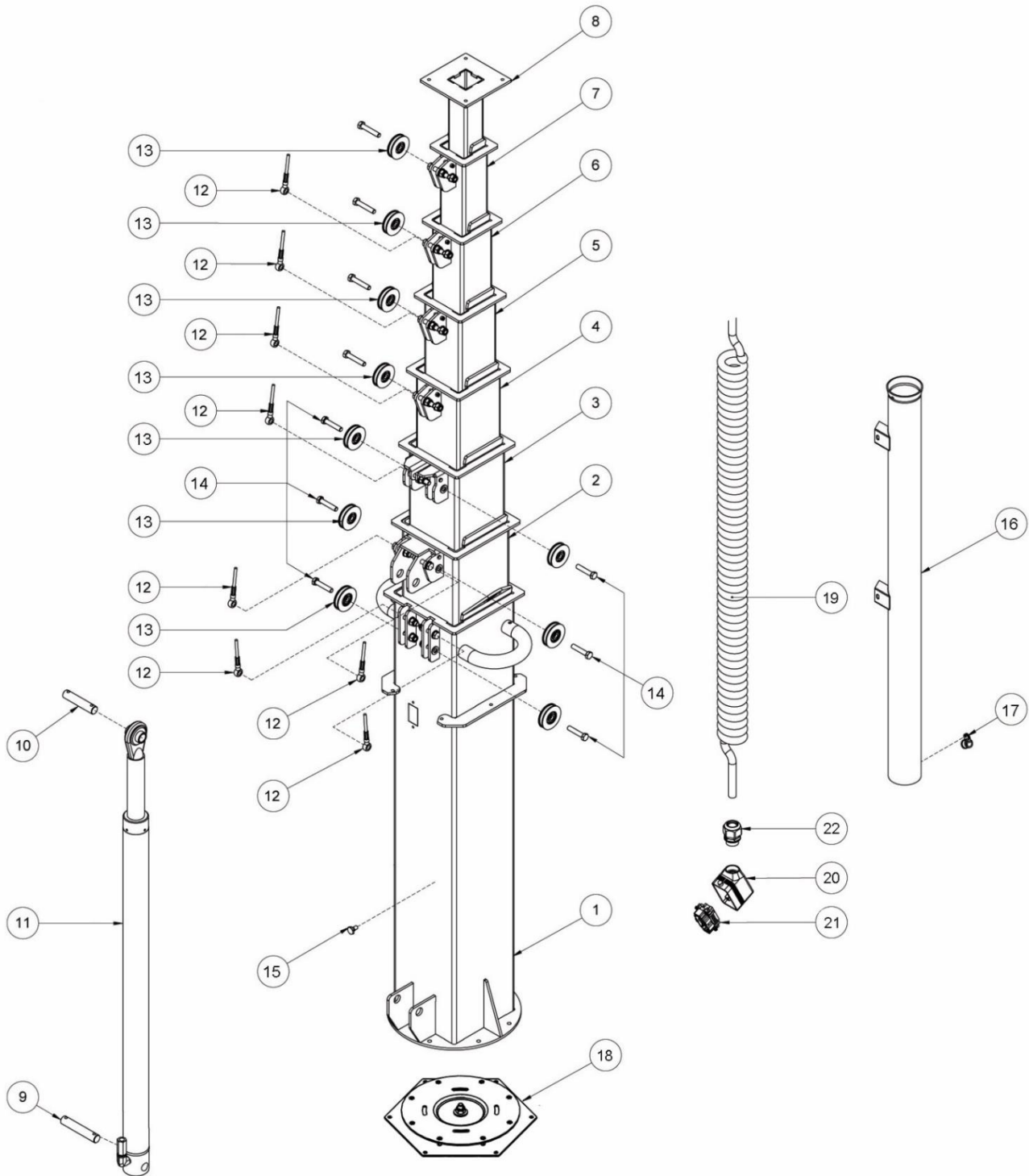


CUBE+ HYBRID 8,4m 4x150W LED

Items	Code	Denomination
1-4-5-6-7-8-9-10	16312-45-R	Alternator door complete
1	6226-2900	Rubber for side door hook
2	16149-55-Z	Plate for side door hook
3	16149-54-Z	Hook door
4	17588-01	Soundproofing panel
5	16312-09-V	Inside air grid (V=white painted)
6	16312-45-V	Alternator door (V=white painted)
7	6201	Handle with lock
8	8766	Black hinge
9	16312-10-V	External air grid (V=white painted)
10	9340	Plastic cap stops coating
1-7-8-10-11-12	16149-65-R	Alternator/mast door complete
11	17092-01	Soundproofing panel
12	16149-65-V	Alternator/mast door (V=white painted)
7-8-10-13-14-15-16-17-18-20	16149-19-RH	Top door complete
13	16292-07	Soundproofing panel
14	16312-33-V	Cover for grid (V=black painted)
15	16311-black	200x100 plastic black grid
15	16311-white	200x100 plastic white grid
16	16149-19-V	Top door (V=white painted)
17	11588	D.5 rubber bumpers
18	6827	Handle
19	16291	300N 230 stroke gas spring
20	16149-43-V	Plate for door (V=black painted)
21	16149-56-Z	Plate for top door hook
7-8-10-22-23-24-25-26-27-28	19141-R	Front door complete
22	16292-03	Soundproofing panel
23	17092-02	Soundproofing panel
24	19141-V	Front door (V=white painted)
25	7858-220	Rubber profile gasket with metal core
26	17092-04	Soundproofing panel
27	6226-2750	Rubber profile gasket with core
28	16292-02	Soundproofing panel

CUBE+ HYBRID 8,4m 4x150W LED

1.13 TELESCOPIC MAST (cold galvanized version)

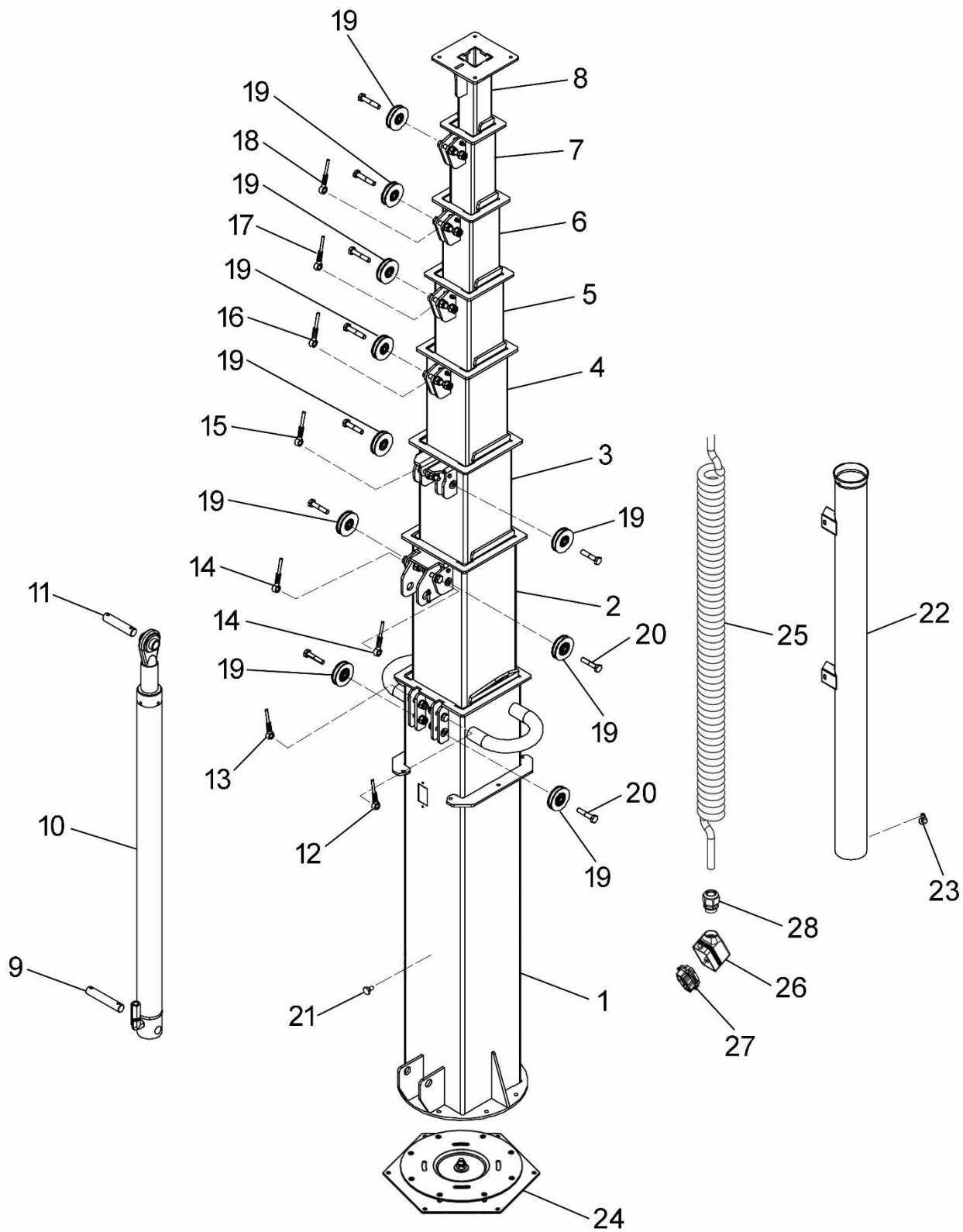


CUBE+ HYBRID 8,4m 4x150W LED

Items	Code	Denomination
1	18402-Z	1° section mast 200x200
2	18403-Z	2° section mast 180x180
3	18404-Z	3° section mast 160x160
4	18405-Z	4° section mast 140x140
5	18406-Z	5° section mast 120x120
6	18407-Z	6° section mast 100x100
7	18408-Z	7° section mast 80x80
8	18409-Z	8° section mast 60x60
9	6231-Z	Hydraulic cylinder lower pin
10	6230-Z	Hydraulic cylinder top pin
11	19550	Hydraulic cylinder
12	18207	Steel cable (l 1370 Ø 6)
13 ⁽¹⁾	13006	Ø 55-67 SKF High Rated wheel for steel cable
14	FP01A02-025	Screw T.E. 8.8 10x50
15	6234	Inox screw M8 H=4mm
16	10188-Z	Tube cable guide
17	7531	15/15 RSGU1 clamp
18	17710	Thrust bearing assembly
19-20-21-22	17730	11Gx2,5 mm ² turn cable complete
19	12693	11Gx2,5 mm ² turn cable
20	13271-08	10/18P side out terminal box
21	13271-02	10P male terminal board
22	16475	M25 x 1.5 wire holder
⁽¹⁾		Specify the diameter

CUBE+ HYBRID 8,4m 4x150W LED

1.14 TELESCOPIC MAST (Dip galvanized drop version)

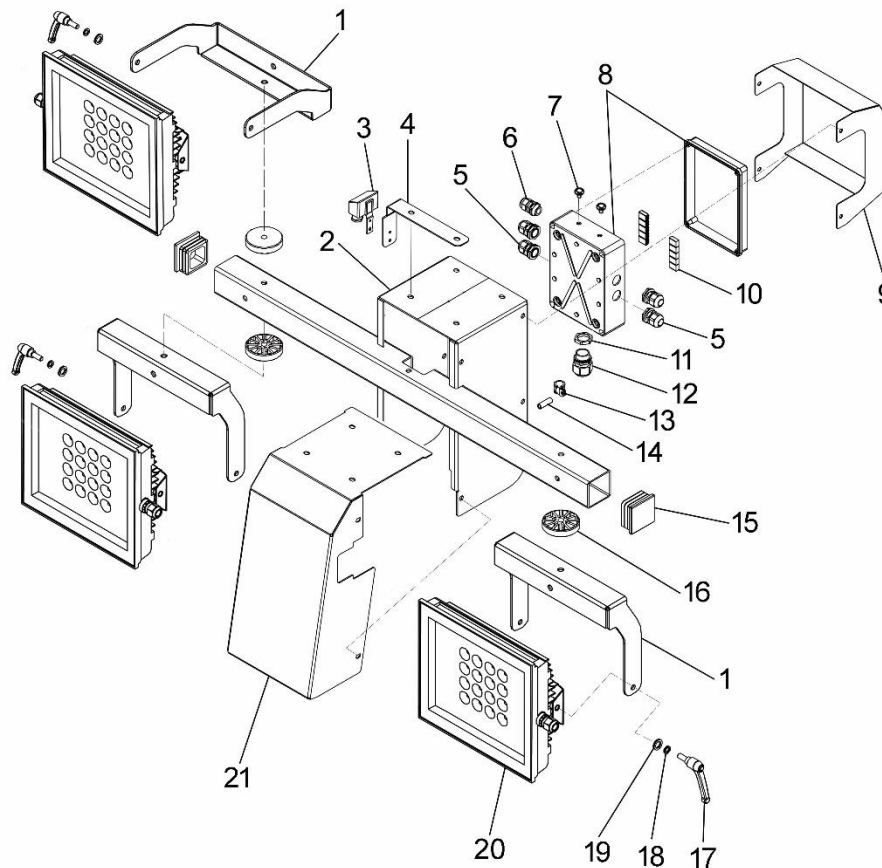


CUBE+ HYBRID 8,4m 4x150W LED

Items	Code	Denomination
1	11357-ZC	1° section mast 200x200
2	9542-ZC	2° section mast 180x180
3	9543-ZC	3° section mast 160x160
4	9544-ZC	4° section mast 140x140
5	9545-ZC	5° section mast 120x120
6	9546-ZC	6° section mast 100x100
7	9547-ZC	7° section mast 80x80
8	9548-ZC	8° section mast 60x60
9	6231-Z	Hydraulic cylinder lower pin
10	6230-Z	Hydraulic cylinder top pin
11	19550	Hydraulic cylinder
12	12990	Steel cable (l 1440 Ø 6)
13	12991	Steel cable (l 1460 Ø 6)
14	12992	Steel cable (l 1385 Ø 6)
15	12993	Steel cable (l 1400 Ø 6)
16	12994	Steel cable (l 1415 Ø 6)
17	12995	Steel cable (l 1430 Ø 6)
18	12996	Steel cable (l 1455 Ø 6)
19 ⁽¹⁾	13006	Ø 55-67 SKF High Rated wheel for steel cable
20	FP01A02-025	Screw T.E. 8.8 10x50
21	6234	Inox screw M8 H=4mm
22	10188-Z	Tube guides cable
23	7531	15/15 RSGU1 clamp
24	17710	Thrust bearing assembly
25-26-27-28	17730	11Gx2,5 mm turn cable complete
25	12693	11Gx2,5 mm turn cable
26	13271-08	10/18P side out terminal box
27	13271-02	10P male terminal board
28	16475	M25x1.5 wire holder
⁽¹⁾		Specify the diameter

CUBE+ HYBRID 8,4m 4x150W LED

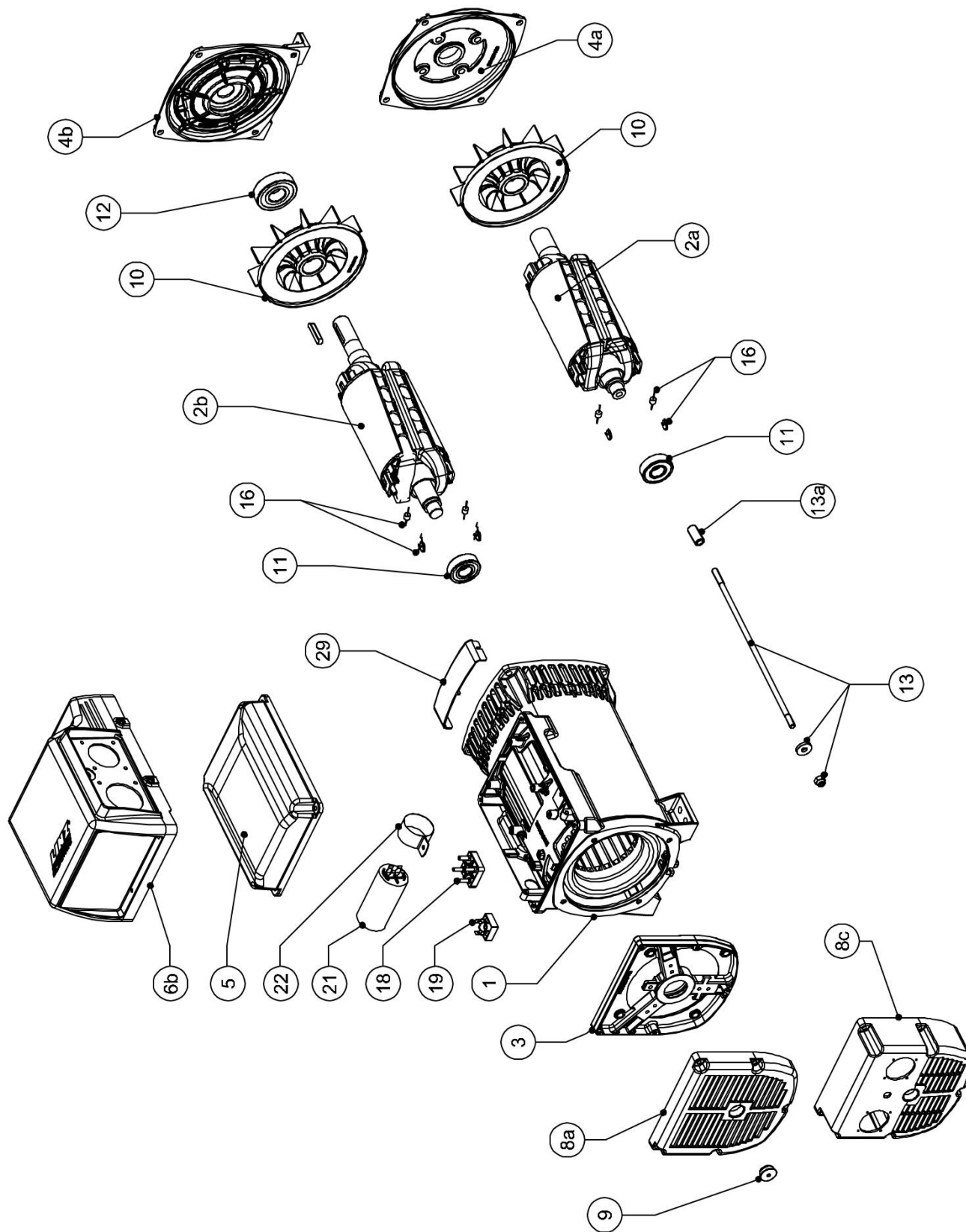
1.15 FLOODLIGHTS GROUP



Items	Code	Denomination
1	16280-03-Z	Floodlight support
2	15703-V	Floodlights support (V=black painted)
3	10691-01	Light sensor
4	18656-V	Light sensor support (V=black painted)
5	7781	PG 13.5 (8÷13mm) wire holder
6	7051	PG 11 (5÷10mm) wire holder
7	6733	D.8 rubber cap
8	12185	Electrical box
9	11935-V	Turn cable protection (V=black painted)
10	14668	2P distribution clamp
11	CA26CD25	Lock nut PA6 M25 black
12	16475	M25x1.5 black wire holder
13	7531	15/15 RSGU1 clamp
14	7020-Z	Spacer for fixing turn cable
15	10255	Cap
16	13636-04	H 15 spacer
17	7217	M10 hand lever
18	14013	D.10x126.6 NORD LOCK washer
19	16984	D.15 NORD LOCK washer
1-20	16881	15 W LED black floodlight (without driver) complete
21	15704-V	Front cover (V=black painted)

CUBE+ HYBRID 8,4m 4x150W LED

1.16 ALTERNATOR



CUBE+ HYBRID 8,4m 4x150W LED

Items	Code	Denomination
-	13473	E1C10C1HFFE10SV Linz alternator complete
1a	*	Frame with stator "S"
2a	*	B9 Rotating inductor
2b	*	B14 Rotating inductor
3a	*	B3/B9 Rear shield
3b	*	B9 Rear shield
4a	*	D.105 Front cover
4a	*	J609b D.146 Front cover
4a	*	J609a D.41 Front cover
4b	*	B3/B14 Front cover
5a	*	Short frame top cover "S"
6b	*	Pierced top cover
8a	*	Standard rear cover
8b	*	High rear cover
8c	*	High pierced rear cover
9	*	Plug rear
10a	*	D.30 Fan
10b	*	D.34 Fan
11	*	Rear bearing
12	*	Front bearing
13	*	Central tie rod
13a	*	Tie rod bush
16	*	Wired diode and varistor
18	*	4 stud terminal board
19	*	Single phase diode bridge
21	*	Capacitor
22	*	Capacitor clamp
29a	*	IP21 cover short frame "S"
29b	*	IP21 cover short frame "S"

* When requesting spare parts please indicate the alternator's code and date of production.

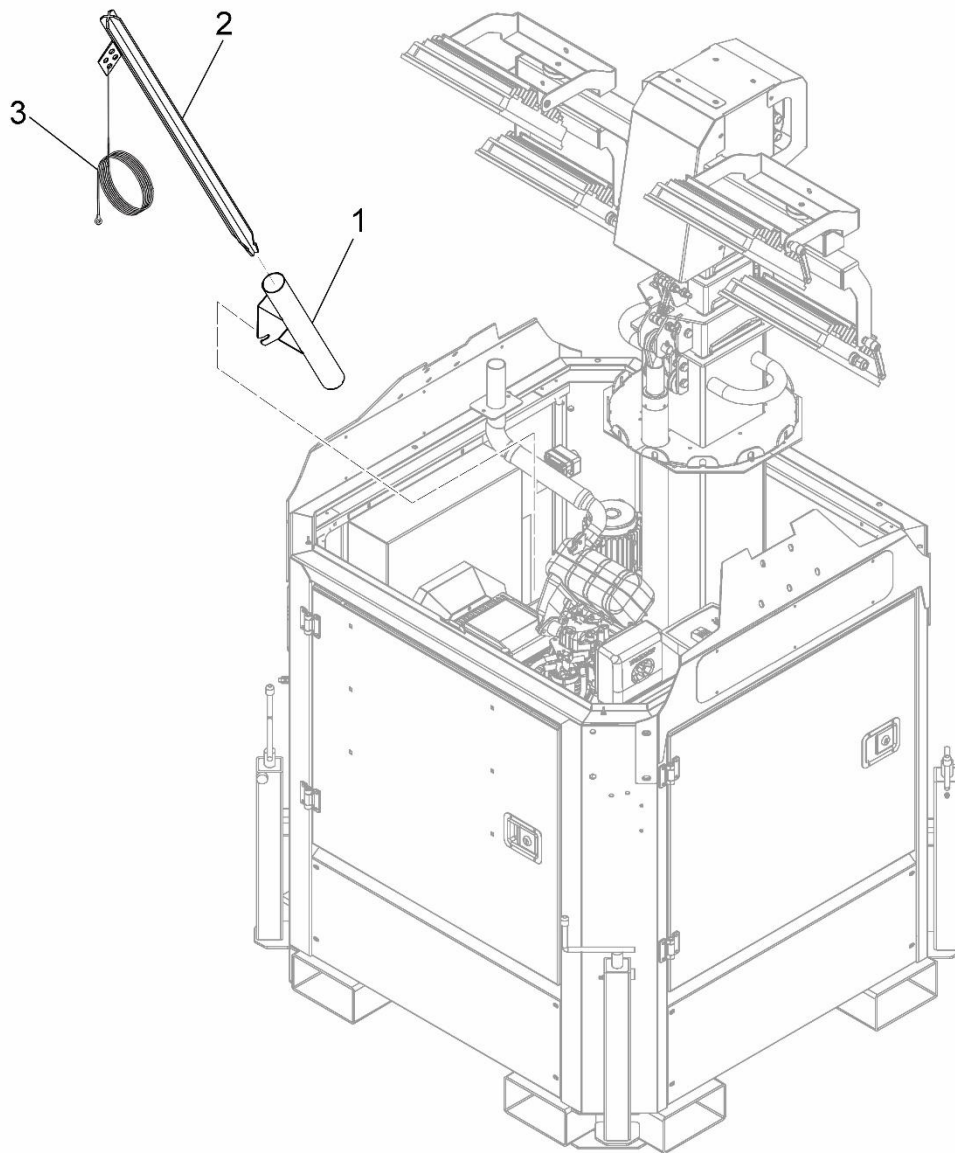
1.17 ENGINE

Items	Code	Denomination
-	17895 *	L70V5 Yanmar
-	17894 *	L70V5 Yanmar (increased oil sump version)

* When requesting spare parts please indicate the engine code and serial number.

CUBE+ HYBRID 8,4m 4x150W LED

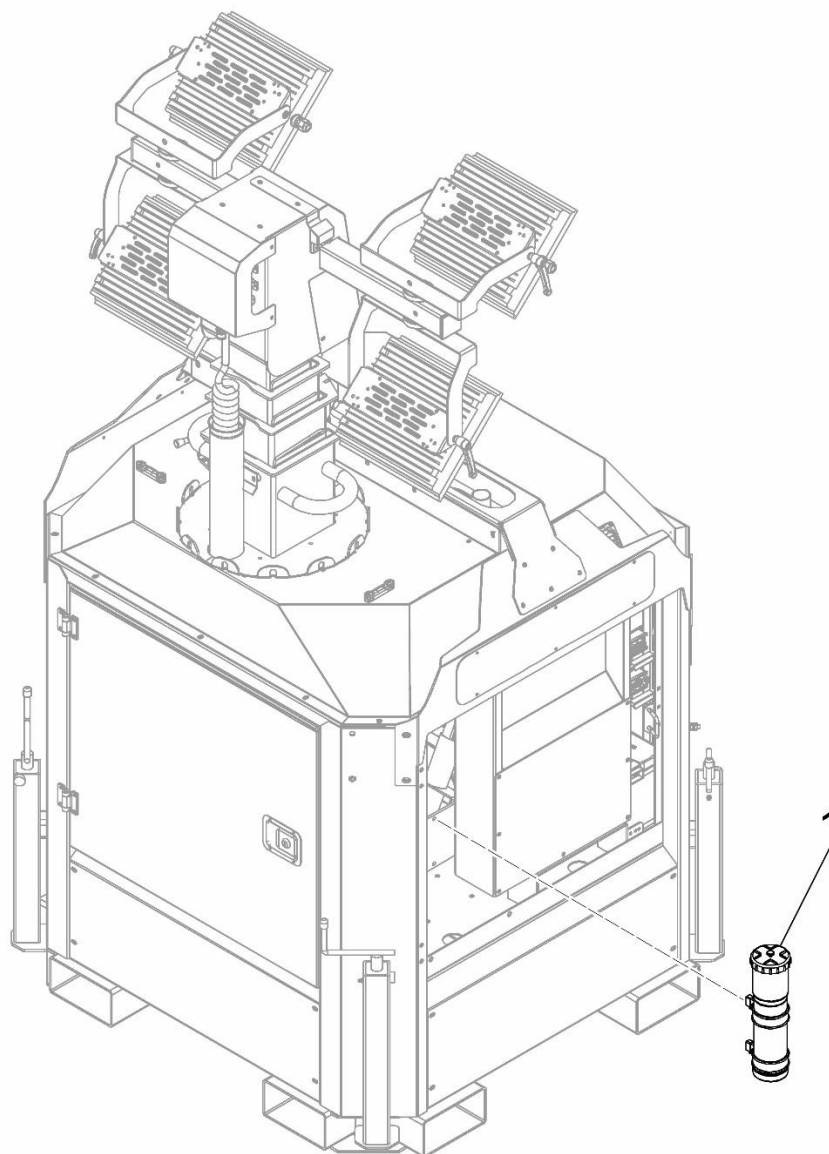
1.18 EARTHING ROD (on request)



Items	Code	Denomination
1	16962-Z	Earth rod support
2-3	16645-01	Earth rod with cable
2	16645	L.1000mm earth rod
3	CAGV100-5000	Cable for earthing rod

CUBE+ HYBRID 8,4m 4x150W LED












1.19 BOX DOCUMENT (on request)



Items	Code	Denomination
1	14276	Box document

CUBE+ HYBRID 8,4m 4x150W LED

1.20 STICKERS

Adhesive	Code
	16789
	16792
	16788
	10182
	10179
	10181
	10180
	10185
	10183
	6844
	16800