

The Instant Safe Working Platform for Stairs

Stair Snappy

Stair Snappy is a safe working platform designed for all stair applications.



- Made in Australia from our lightweight, high strength extruded and drawn aluminum tube.
- Featuring our exclusive dual rib grip technology which is 3 times stronger than welding.
- The Stair Snappy is the ultimate tool to get the job done quickly, easily and safely.



**EXCLUSIVE
DUAL RIB GRIP
TECHNOLOGY**



Base unit shown

The Instant Safe Working Platform for Stairs

Stair Snappy

ADVANTAGES

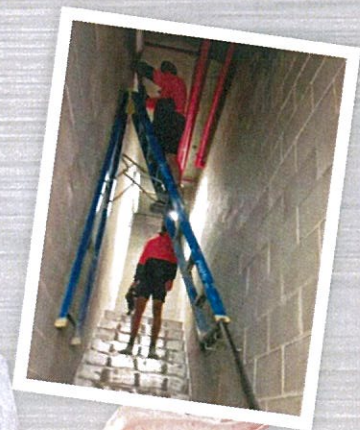
- 1 Set up in less than 10 minutes
- 2 Lightweight, compact and easy to carry
- 3 Eliminates unsafe ladder usage on stairs

- Complies with AS/NZS 1576 Scaffolding
- Compatible with Instant Access' standard scaffold components
- 2.0m standard platform height, extendable up to 6.0m
- Non-slip, non-marking rubber feet with 300mm adjustable legs
- Large non-slip platform area 1.8m x 0.6m allowing 2 persons and tools
- Scaffold rated to 225Kg SWL

For more information
or to arrange delivery

Call us now on
1300 10 20 80

Don't risk a fall, choose the proven safe option.



instantAccess
The Access Specialists

www.instantaccess.com.au



INSTANT ACCESS

The **ACCESS SPECIALISTS**

Instant Access Australia Pty Ltd ABN 2001 872 500
Instant Access NZ Limited

INSTANT SNAPPY ERECTION PROCEDURE

1. Check the snappy scaffold for any obvious signs of damage, worn or missing parts.

a. The snappy comprises of a 4-rung folding one-piece base unit mounted on locking castors.

b. A working platform is supplied that should only be fitted to the lower 3-rungs of the frame. **(Under no circumstance should the platform be fitted to the top rung).**



2. Lock the 2 castors in one frame of the base unit.

3. Simply open the base unit by rolling the other frame outwards until the folding diagonal braces extend as far as possible.

4. Grab both diagonal braces at the VX Joint and with the index finger on both hands depress the steel lug which will snap the joint in the fixed position. Ensure fingers are clear of VX-joint as this is a pinch point.



5. Lock the 2 castors in the other frame.

6. Fit the platform at the desired platform height **(only the lower 3-rungs of the snappy frame must be used).**

7. The snappy can only be used on hard level surfaces.

8. Access and egress from the snappy should be through the end of the snappy; entry through the side may cause the snappy to tip over.

9. Disassembly of the snappy is the reverse to the above.



Special notes:-

- SWL (safe working load) is 225kg.
- Snappy complies with AS1576.1:1995
- Where a person can fall more than 2.0m optional handrails must be used.