

**Evaluation Only. Created with Aspose.Words. Copyright 2003-2021 Aspose Pty Ltd.**



**Created with an evaluation copy of Aspose.Words. To discover the full versions of our APIs  
please visit: <https://products.aspose.com/words/>**

649

Pallet trolley

1115 020

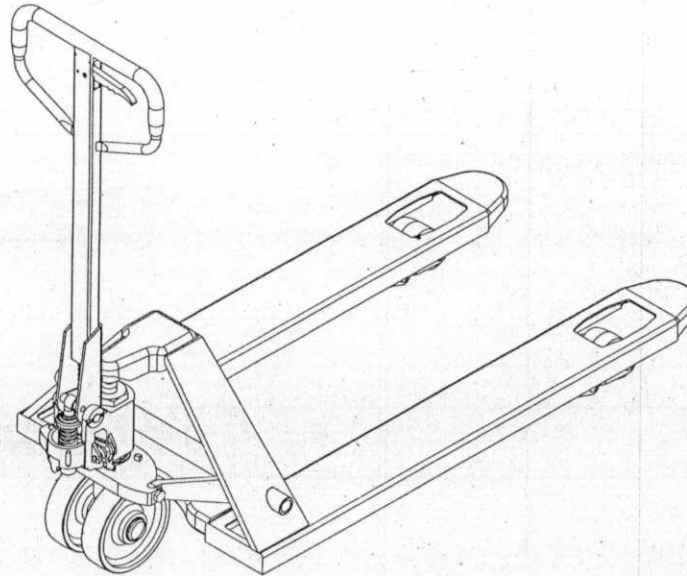
021

SCANNED

07/2011

HAND-HYDRAULIC

# PALLET TRUCK



**Thank you for using this pallet truck. For your safety and correct operation, please carefully read this instruction before using it.**

NOTE: All of the information reported herein is based on data available at the moment of printing. The factory reserves the right to modify its own products at any moment without notice and incurring in any sanction. So, it is suggested to always verify possible updates.

### 1. GENERAL SPECIFICATIONS

Capacity: 2000-3000kg	Fork length: 1100-1220mm
Width: 550-685mm	Min. /Max. Fork height: 75/85-190/200mm
Weight: 74-90kg	

### 2. TO ATTACH HANDLE TO PUMP UNIT

- 2.1 Set handle tube (C11) on the base frame (C28), notice to allow the chain (C15) and the adjusting bolts (C16) assembly to pass through the hole in the center of pressure shaft (C21).
- 2.2 Insert the split pin (C20) through the pressure shaft (C21) into the base frame (C28).
- 2.3 Raise the lever plate (C54) and insert the adjusting bolt (C16) into the front slot. Keeping the nut (C17) on the under side of the lever plate (C54).

### 3. TO ADJUST RELEASE DEVICE

On the draw-bar of this pallet truck, you can find the handle (C8) which can be regulated in three positions (See fig.1):

LOWER = to lower the forks, NEUTRAL GEAR = to move the load, and ASCENT = to raise the fork. These three positions have been pre-positated at the factory. If however they have been changed, you can adjust according to following step:

- 3.1 If the forks elevate while pumping in the NEUTRAL GEAR position, turn the adjusting nut (C17) on the adjusting bolt (C16) clockwise or turn the adjusting screw (C56) clockwise until pumping action does not raise the forks and the NEUTRAL GEAR position functions properly.
- 3.2 If the forks descend while pumping in the NEUTRAL GEAR position, turn the nut (C17) or the screw (C56) counter-clockwise until the forks do not lower.
- 3.3 If the forks do not descend when the handle (C8) is in the LOWER position, turn the nut (C17) or the screw (C56) clockwise until raising the handle (C8) lowers the forks. Then check the NEUTRAL GEAR position according to item 3.1 and 3.2 to be sure the nut (C17) and the screw (56) is in proper position.
- 3.4 If the forks do not elevate while pumping in the ASCENT position, turn the nut

(C17) or the screw (C56) counter-clockwise until the forks elevate while pumping in the ASCENT position. Then check the LOWER and NEUTRAL GEAT position according to item 3.1, 3.2 and 3.3.

#### **4. MAINTENANCE**

##### **4.1 Oil**

Please check the oil level every six months. The oil can be hydraulic oil, motor oil or brake oil. Its viscosity should be 32cst 40°C, total volume is about 0.3lt.

##### **4.2 TO BANISH THE AIR**

The air may come into the hydraulic oil because of transportation or pump in upset position. It can cause that the forks do not elevate while pumping in the ASCENT position. The air can be banished in the following way: let the handle (C8) on the LOWER position then move the handle tube (C11) up and down for several times.

##### **4.3 DAILY CHECK AND MAINTENANCE**

Daily check of the pallet truck can limit wear as much as possible, special attention should be paid to the wheels, the axles, as thread, rags, etc. It may block the wheels. The forks should be unloaded and lowered in the lowest position when the job is over.

##### **4.4 LUBRICATION**

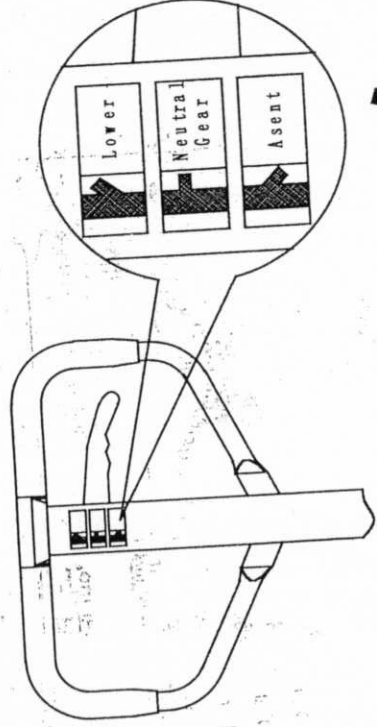
Use motor oil or grease to lubricate all movable part.

#### **5. GUIDE TO SAFETY OPERATION**

- 5.1 Operator should read all warning signs and instructions here and on the pallet truck before using this truck.
- 5.2 Do not operate a pallet truck unless you are familiar with it and have been trained or authorized to do so.
- 5.3 Do not operate a pallet truck unless you have checked its condition. Give special attention to the wheels (C76, C100), the handle unit, the fork unit, the lever plate (C54) etc.
- 5.4 Do not to use on sloping ground.
- 5.5 Do not take up any people on the pallet truck.
- 5.6 The operator had better take on gloves for labor protecting.
- 5.7 When the goods have been transported, all people should be away from the forks for 600mm.
- 5.8 Do not load goods like fig.2/B.
- 5.9 Do not load over maximum capacity.
- 5.10 At others special condition or place, the operator should be carefully to operate the pallet truck.

#### **6. TROUBLES SHOOTING**

Fig. 1



A

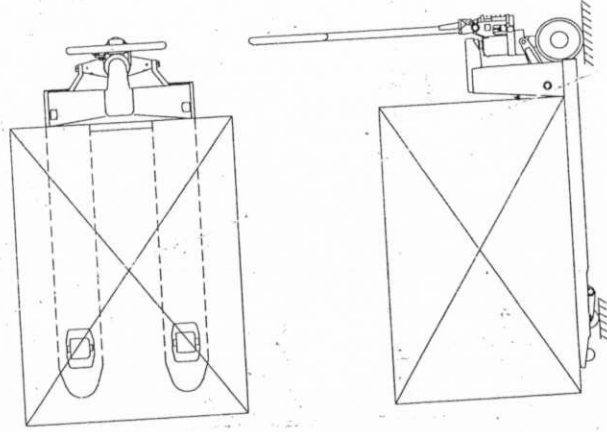
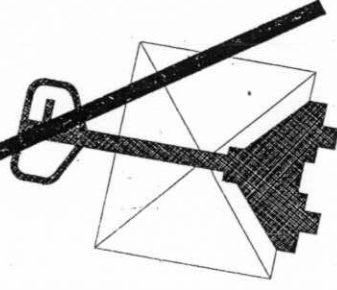
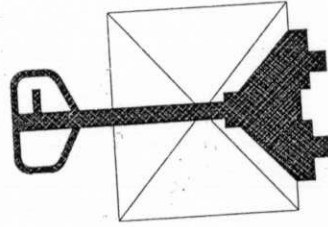
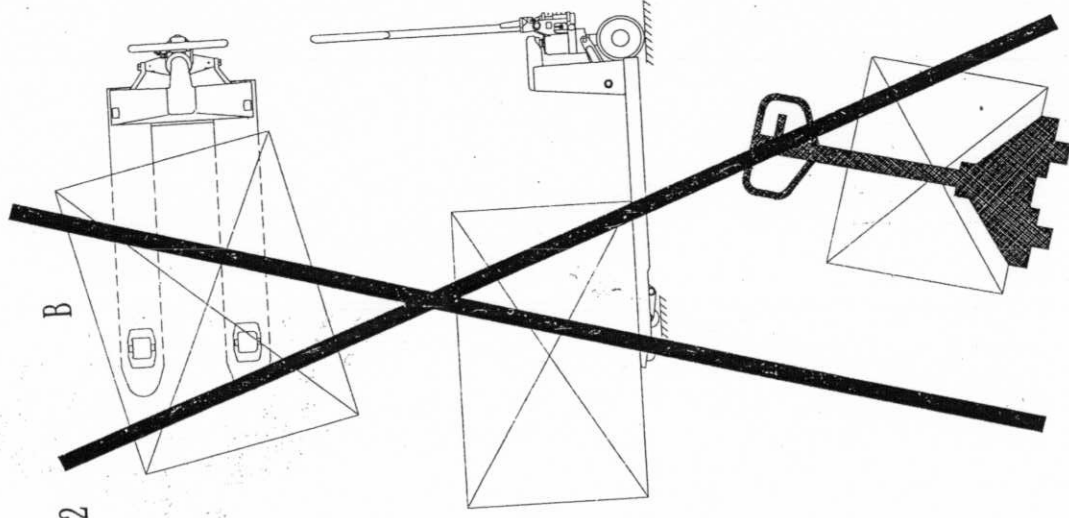
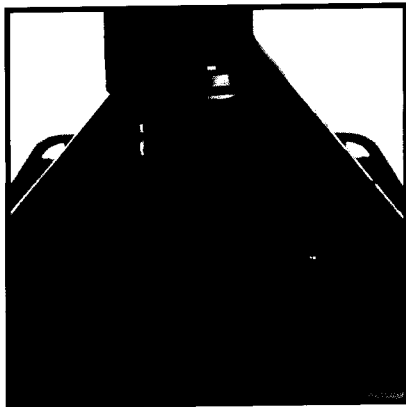


Fig. 2

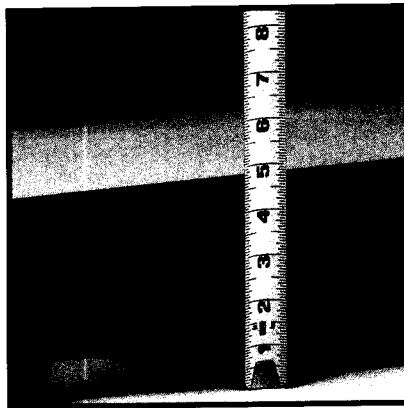
B



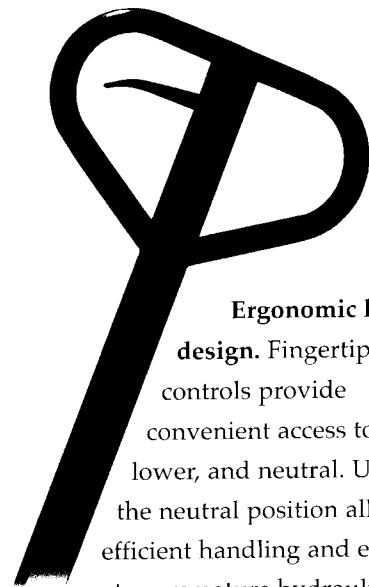
Built to last. Easy to own.



**Strength for the long haul.** The rugged Raymond® Hand Pallet Truck is also designed for quick, easy serviceability. Tow bar shoulder support reduces stress on the lower tow bar. Solid steel, fixed pushrods eliminate the need for adjustments. Simplified pump assemblies use fewer parts and feature uniquely packed seals. Pivot points feature brass bushings, and 10 grease fittings simplify the lubrication of all moving parts.



**Maximum clearance.** The 2.9" lowered height permits easier entry and exit, even into sagging pallets. Entry and exit rollers provide smooth transitions in and out of pallets — and improved control of delicate goods or heavy loads. Variable speed lowering comes standard, reducing the chance of product damage.



**Ergonomic handle design.** Fingertip controls provide convenient access to lift, lower, and neutral. Using the neutral position allows efficient handling and eliminates premature hydraulic wear. The handle return spring automatically restores the handle safely to its vertical position. And a full 180 degree steering radius lets you navigate tight quarters.

Options include: Hand brake/parking brake, skid adapter, load backrest, varying fork configurations. Stainless steel construction also available.

Extra Low 2.9" Lowered Height				
MODEL	CAPACITY	A	L	C
RJ50-P	5000 lbs.	27.0"	48.0"	6.2"
<i>Also available in these configurations.</i>		27.0"	42.0"	6.2"
		27.0"	36.0"	6.2"
		20.5"	48.0"	6.2"
		20.5"	42.0"	6.2"
		20.5"	36.0"	6.2"



For durability and performance, consider Raymond's complete line of low-lift trucks. Ask your Raymond Dealer for more information today.

**RAYMOND**  
Above. And beyond.™

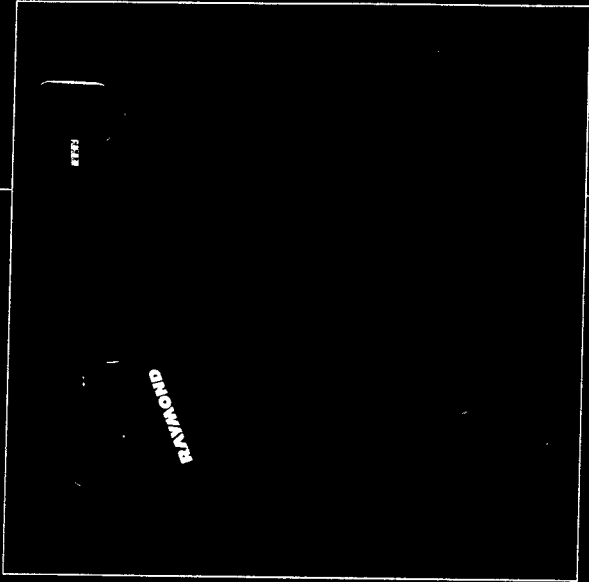
The Raymond Corporation  
P.O. Box 130  
Greene, NY 13778-0130  
Toll Free 1 (800) 235-7200  
Fax 1 (607) 656-9005

raymondcorp.com

Due to continuous product improvements, specifications are subject to change without notice.

©1998 The Raymond Corporation, Greene, NY. Raymond and the Raymond logo are U.S. trademarks. Above. And beyond. is a U.S. service mark.

Printed in USA. SIFB-0073 499CG-20



The *Raymond*® Hand Pallet Truck

**RAYMOND**



- ▶ Heavy-duty construction
- ▶ Smooth, quiet, precise handling
- ▶ Trouble-free operation

Raymond first introduced the hydraulic hand truck — by inventing it in 1929.

Today, Raymond's 75 years of experience continues to produce the finest, most durable hand truck available.

Simplicity and maneuverability make *Raymond* Hand Pallet Trucks the logical choice for use every day, throughout your operation. Heavy-duty construction stands up to the most grueling applications, year after year.

And with so many choices — from varying fork lengths to stainless steel assemblies — you can count on Raymond to deliver a hand truck fit for your use.

**RAYMOND**  
Above. And beyond.™