

# Safety First

ENERPAC 

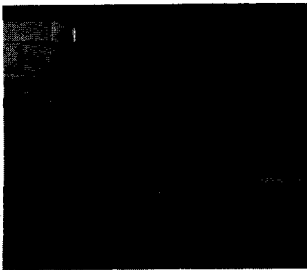
Hydraulic power is one of the safest methods for applying force to your work – when used correctly. Below we have provided several common sense rules which pertain to the use of nearly all Enerpac hydraulic tools.

Observance of these simple rules will add the value of safety to the speed and convenience of Enerpac hydraulics. Correct usage will also extend the useful life of your hydraulic tools.

## Caution:

- DO NOT touch or handle hydraulic hose or fittings with pressure in the system.
- DO NOT make or break any hydraulic connection with pressure in the system.
- DO NOT make any electrical adjustments with electrical power active in the system.

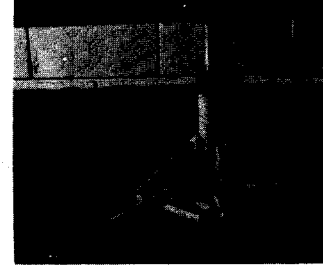
**Safety information for specific Enerpac hydraulic tools is detailed on Instruction Sheets included with all products.**



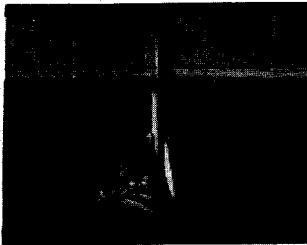
Use hydraulic gauges to insure proper operating pressure. Always operate within rated pressure of the hydraulic equipment.



Operate pump away from the load. Always avoid the area beneath loads supported by hydraulic cylinders.



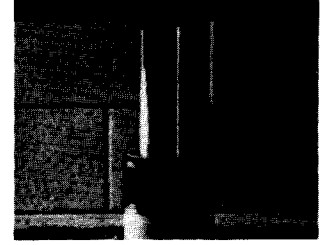
Use shut-off and check valves for temporary load holding. Cribbing and blocking should be used for sustained load holding.



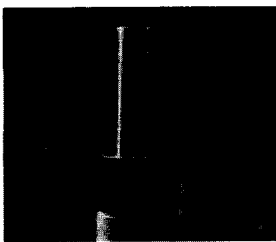
Provide a solid foundation when using hydraulic cylinders. Use cylinder bases where available.



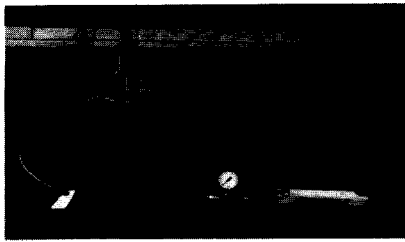
Pump valve must be in center or neutral position when starting pump.



The cylinder saddle or plunger must fully engage the load and not be partially engaged in any way.



Operate cylinder within rated stroke limits. Do not lift off-center loads.



Do not operate hose with sharp bends or kinks. Discard hose that has been kinked or otherwise damaged.



Carry equipment by handles provided. Never carry equipment by the hoses or couplers.

## Important - User Safety and Protection

**Line Drawings and Application Photos are NOT designed or developed by Enerpac.**

The line drawings and application photos of Enerpac products throughout this catalog are used to portray how some of our customers have used hydraulics in industry.

In designing similar systems, care must be taken to select the proper components that provide safe operation and fit your needs. Check to see that all safety measures have been taken to avoid the

risk of personal injury and property damage from your application or system.

**Enerpac Cannot Be Responsible for Damage or Injury Caused by Unsafe Use, Maintenance or Application of Its Products.**

Please contact the Enerpac office or a representative for guidance when you are in doubt as to the proper safety precautions to be taken in designing and setting up your particular application.