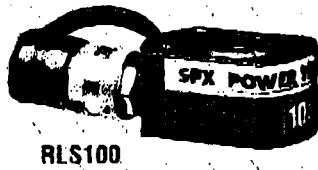


"Low Profile" Cylinders (RLS Series)

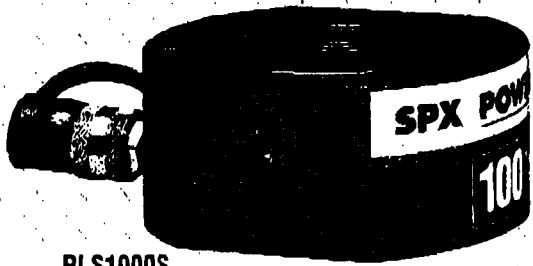
Single-Acting, Spring-Return — 5-150 Ton Capacity

Ideal for confined areas from 41.3 to 101.6 mm clearance.

700 bar



RLS100



RLS1000S

- Couplers on all cylinders, except RLS50, are angled upward for extra clearance.
- A 9796 1/2" NPTF female half coupler is standard with each cylinder. Oil ports are 1/2" NPTF.
- Unique heavy duty spring provides fast piston return.
- Standard domed piston rod (on 5-30 ton) or swivel cap (on 50-150 ton) minimize effects of off-center loading.
- Fully comply with ASME B30.1 standard.
- Cylinder bodies, pistons and gland nuts have "Power Tech" surface treatment for corrosion and abrasion resistance (see page 176)

Hoses, Fittings & Gauges
Pages
74-80



Cylinder/Pump
Speed/Selection
Chart Page
178



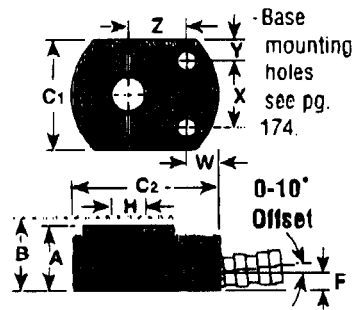
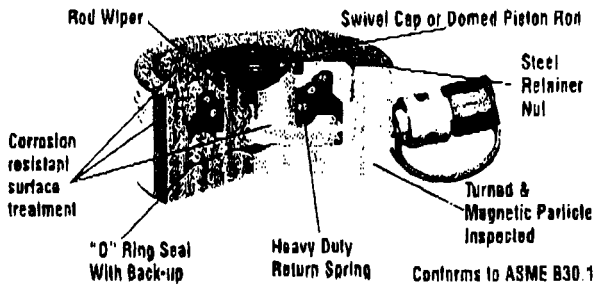
Cylinder/Pump
Sets
Page
25



Cylinder
Repair
Kits
Page 159



Technical Info
Page 174



ORDERING INFORMATION

See current price list for shipping weights

Cyl. Cap. (tons)	Stroke (mm)	Order No.	Oil Cap. (cu. cm.)	A Re-tracted Height (mm)	B Ex- tended Height (mm)	C1 & C2 Outside Dia. (mm)	F Base to Port (mm)	H Piston Rod Dia. (mm)	W	X	Y	Z	Bore Dia. (mm)	Cyl. Eff. Area (sq. cm.)	Int. Press. at Cap. (bar)	Metric Tons at 700 bar	Prod. Wt. (kg)
5	14.3	RLS50	10.2	41.3	55.6	41.3 x 65.1	19.1	15.9	19.1	28.6	6.4	25.4	28.6	6.4	694	4.5	1.0
10	11.1	RLS100	16.4	44.5	55.6	55.6 x 82.6	15.9	19.1	17.5	36.5	9.5	33.3	42.9	14.4	617	10.1	1.5
20	11.1	RLS200	32.8	50.8	61.9	76.2 x 101.6	16.7	28.6	18.3	49.2	13.5	39.7	60.3	28.6	623	20.1	2.5
30	12.7	RLS300	52.5	58.7	71.4	95.3 x 114.3	18.3	34.9	20.6	52.4	21.4	44.5	73.0	41.9	638	29.5	3.9
60	15.9	RLS500S	98.4	66.7	82.6	114.3 x 139.7	21.4	44.5	23.8	66.7	23.8	54.0	88.9	62.1	717	43.6	6.3
75	15.9	RLS750S	162.4	79.4	95.3	140.5 x 165.1	25.4	54.0	23.8	76.2	32.1	65.9	114.3	102.6	651	72.2	10.5
100	15.9	RLS1000S	201.7	85.7	101.6	152.4 x 177.8	25.4	63.5	20.6	76.2	38.1	71.4	127.0	126.6	703	89.1	13.0
150	14.3	RLS1500S	282.1	101.6	115.9	190.5 x 215.9	33.3	76.2	33.3	117.5	36.5	79.4	158.8	197.9	675	139.2	23.6

See pages 74-80 & 156-161 for hydraulic accessories.