

# **—PARTS CATALOG—(for CANADA)—**



## **Gasoline Engine Pump**

**Model**

**PTG-405T**

 **FUJI HEAVY INDUSTRIES LTD.**

---

**ISSUE EMD-PP 0593**

# HOW TO USE THIS PARTS CATALOG

## 1. Reference numbers with an asterisk


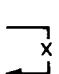
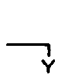
Reference numbers marked with an asterisk indicate that the particular part is available only as a complete set or assembly.

### Example:

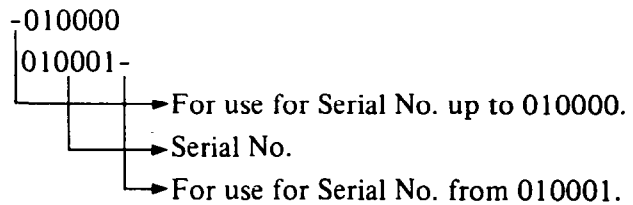
If the reference number is marked with an asterisk and the description of the part states that certain items are included, this means that those included items cannot be ordered separately and must be purchased as a complete assembly.

## 2. Description of interchangeability and execution columns

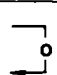
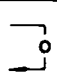


### Example: Interchangeability column

-  Items interchangeable between the new and old parts
-  Items not interchangeable between the new and old parts
-  Items conditionally interchangeable between the new and old parts which are subject to the description in the execution column.

### Example: Execution column



### Example:

| Part Number                | Interchangeable  | Execution          | Explanation  |
|----------------------------|--|--------------------|--|
| Part B<br>Part A           |   | 020000-            | This indicates that Part A changed to Part B for pumps with serial numbers from 20000, and that they are interchangeable.  |
| Part C<br>Part B<br>Part A | <br> | 020000-<br>015000- | This indicates that Part A changed to Part B for pumps with serial numbers from 15000, and that they are not interchangeable. Also, Part B changed to Part C for pumps with serial numbers from 20000 and that they are interchangeable. |
| Part A                     |  | 020000-            | This indicates that Part A is a new part for pumps with serial numbers from 20000.   |
| Part B                     |  | -030000            | This indicates that Part B is no longer used for pumps with serial numbers from 30001.   |
| Part B<br>Part A           |   | 020000-            | This indicates that Part A changed to Part B for pumps with serial numbers from 20000, and that they are conditionally interchangeable (See NOTE described at the end of the section.)   |

3. The contents of this parts catalog are subject to revision without notice.

TO INSURE PROMPT AND ACCURATE SERVICE, ALSO THE FOLLOWING INFORMATION MUST BE GIVEN.

1. State exactly the quantity of each part and its part number.
2. Clearly state whether parts are to be shipped by express, freight or parcel post.
3. State the exact mailing address.

## CONTENTS

|   | <b>Page</b> |
|---|-------------|
| FIG.1 PUMP.....                           | 1           |
| FIG.2 CRANKCASE AND CYLINDER HEAD.....    | 3           |
| FIG.3 CRANKSHAFT,CAMSHAFT AND PISTON..... | 7           |
| FIG.4 VALVE AND TAPPET.....               | 9           |
| FIG.5 GOVERNOR.....                       | 11          |
| FIG.6 BLOWER HOUSING AND MUFFLER.....     | 13          |
| FIG.7 RECOIL STARTER.....                 | 15          |
| FIG.8 FUEL TANK.....                      | 17          |
| FIG.9 AIR CLEANER AND CARBURETOR.....     | 19          |
| FIG.10 MAGNETO (SOLID STATE TYPE).....    | 21          |
| FIG.11 OIL SENSOR.....                    | 23          |
| FIG.12 ACCESSORIES.....                   | 25          |

FIG.1 PUMP

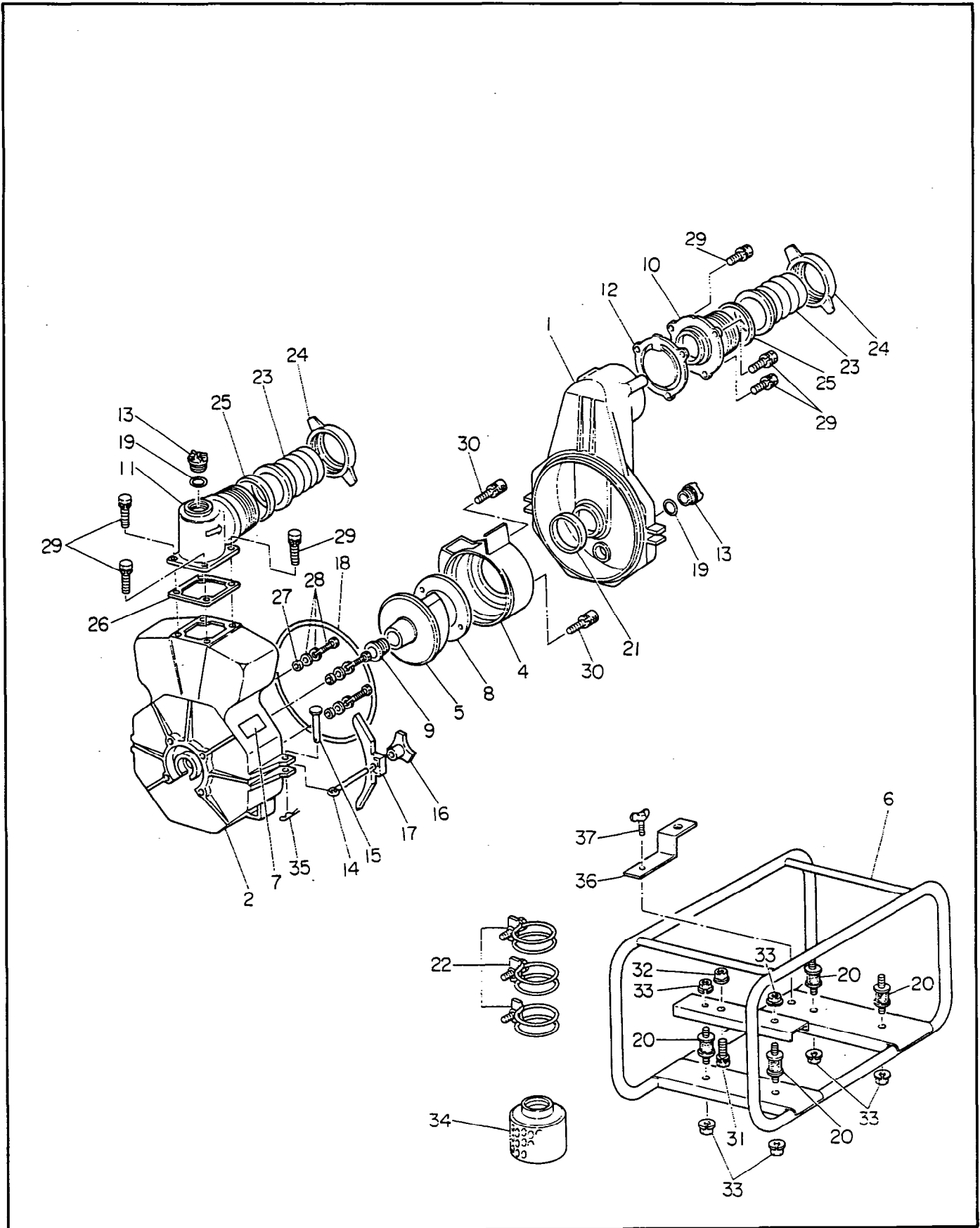
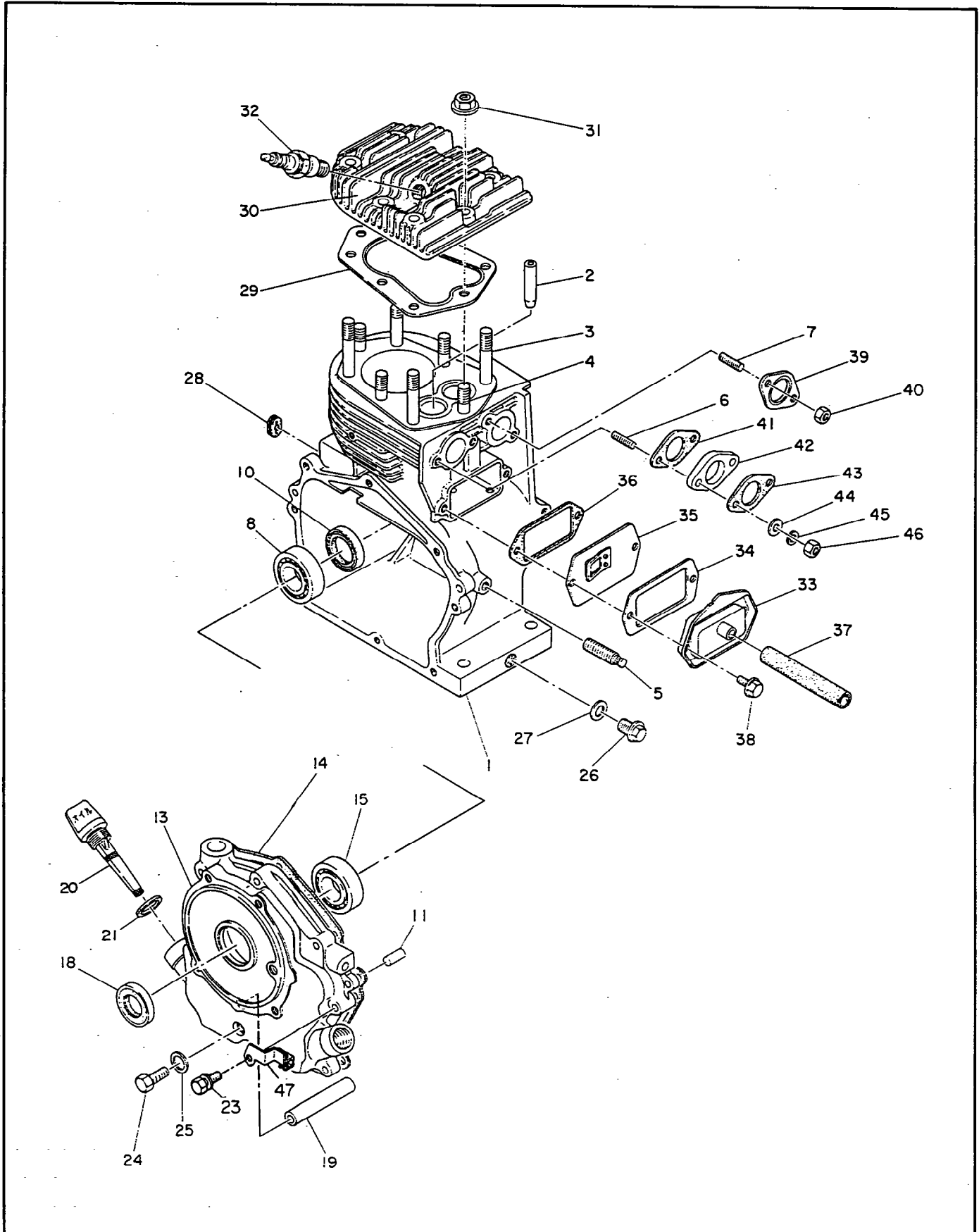




FIG.2 CRANKCASE AND CYLINDER HEAD



## FIG.2 CRANKCASE AND CYLINDER HEAD

Interchangeability

| Ref. No. | Parts Number | Description   | Q'ty | Execution |
|----------|--------------|---|------|-----------|
| * 1      | 224-10201-01 | CRANKCASE, compl.<br>Includes items 2 thru 8, 10 and 11     | 1    |           |
| 2        | 224-14202-03 | VALVE GUIDE (over size)                                     | 2    |           |
| 3        | 010-51002-80 | STUD  | 4    |           |
| 4        | 010-51002-70 | STUD  | 4    |           |
| 5        | 010-50800-31 | STUD  | 1    |           |
| 6        | 010-50602-00 | STUD  | 2    |           |
| 7        | 010-50802-90 | STUD  | 2    |           |
| 8        | 060-03500-10 | BALL BEARING (BB-6207C3)                                    | 1    |           |
| 10       | 044-03500-90 | OIL SEAL (TB-35 $\phi$ $\times$ 48 $\phi$ $\times$ 8mm)     | 1    |           |
| 11       | 005-26081-80 | DOWEL PIN   | 2    |           |
| *13      | 224-11102-01 | MAIN BEARING COVER, compl.<br>Includes items 15, 18 and 19  | 1    |           |
| 14       | 224-15201-03 | GASKET, main bearing cover                                  | 1    |           |
| 15       | 060-03500-10 | BALL BEARING (BB-6207C3)                                    | 1    |           |
| 18       | 044-03500-90 | OIL SEAL (TB-35 $\phi$ $\times$ 48 $\phi$ $\times$ 8mm)     | 1    |           |
| 20       | 224-63601-03 | OIL GAUGE   | 1    |           |
| 21       | 021-32000-10 | GASKET  | 1    |           |
| 23       | 001-14083-50 | BOLT and WASHER ASS'Y                                       | 8    |           |
| 24       | 001-65061-20 | BOLT  | 1    |           |
| 25       | 003-70060-00 | GASKET, aluminium   | 1    |           |
| 26       | 040-11400-30 | PLUG  | 2    |           |
| 27       | 021-11400-20 | GASKET  | 2    |           |
| 28       | 224-75501-03 | GROMMET   | 1    |           |
| 29       | 224-15101-03 | GASKET, head  | 1    |           |
| 30       | 224-13301-03 | CYLINDER HEAD   | 1    |           |
| 31       | 002-38100-00 | FLANGE NUT  | 8    |           |
| 32       | 065-01401-90 | SPARK PLUG (NGK-BP-4HS)                                     | 1    |           |
| 33       | 224-14301-11 | TAPPET COVER, compl.  | 1    |           |
| 34       | 224-15301-03 | GASKET, tappet cover  | 1    |           |
| 35       | 224-14401-01 | BREATHER PLATE, compl.                                      | 1    |           |
| 36       | 224-15401-03 | GASKET, tappet cover  | 1    |           |
| 37       | 085-11200-00 | RUBBER PIPE (12.5 $\phi$ $\times$ 16 $\phi$ $\times$ 100mm) | 1    |           |
| 38       | 011-00600-30 | FLANGE BOLT   | 2    |           |
| 39       | 224-35101-03 | GASKET, exhaust   | 1    |           |
| 40       | 017-00800-30 | NUT   | 2    |           |
| 41       | 224-35202-03 | GASKET, insulator   | 1    |           |
| 42       | 224-32901-03 | INSULATOR   | 1    |           |
| 43       | 208-36003-03 | GASKET 2, insulator   | 1    |           |
| 44       | 003-10060-00 | WASHER  | 2    |           |
| 45       | 003-20060-00 | SPRING WASHER   | 2    |           |

When ordering parts : Always give the Model, Specification and Serial Number of Pump.

FIG.2 CRANKCASE AND CYLINDER HEAD

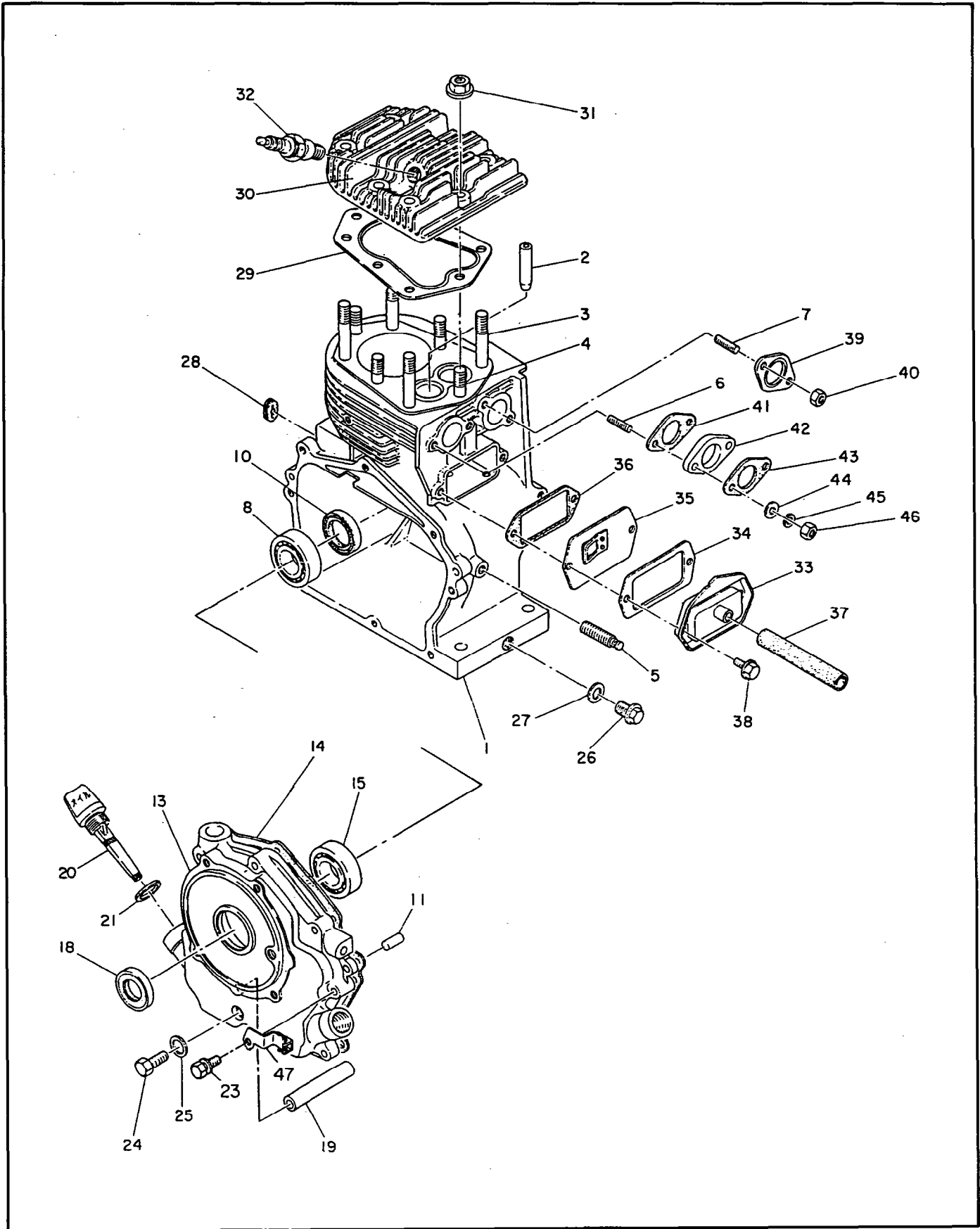




FIG.3 CRANKSHAFT,CAMSHAFT AND PISTON

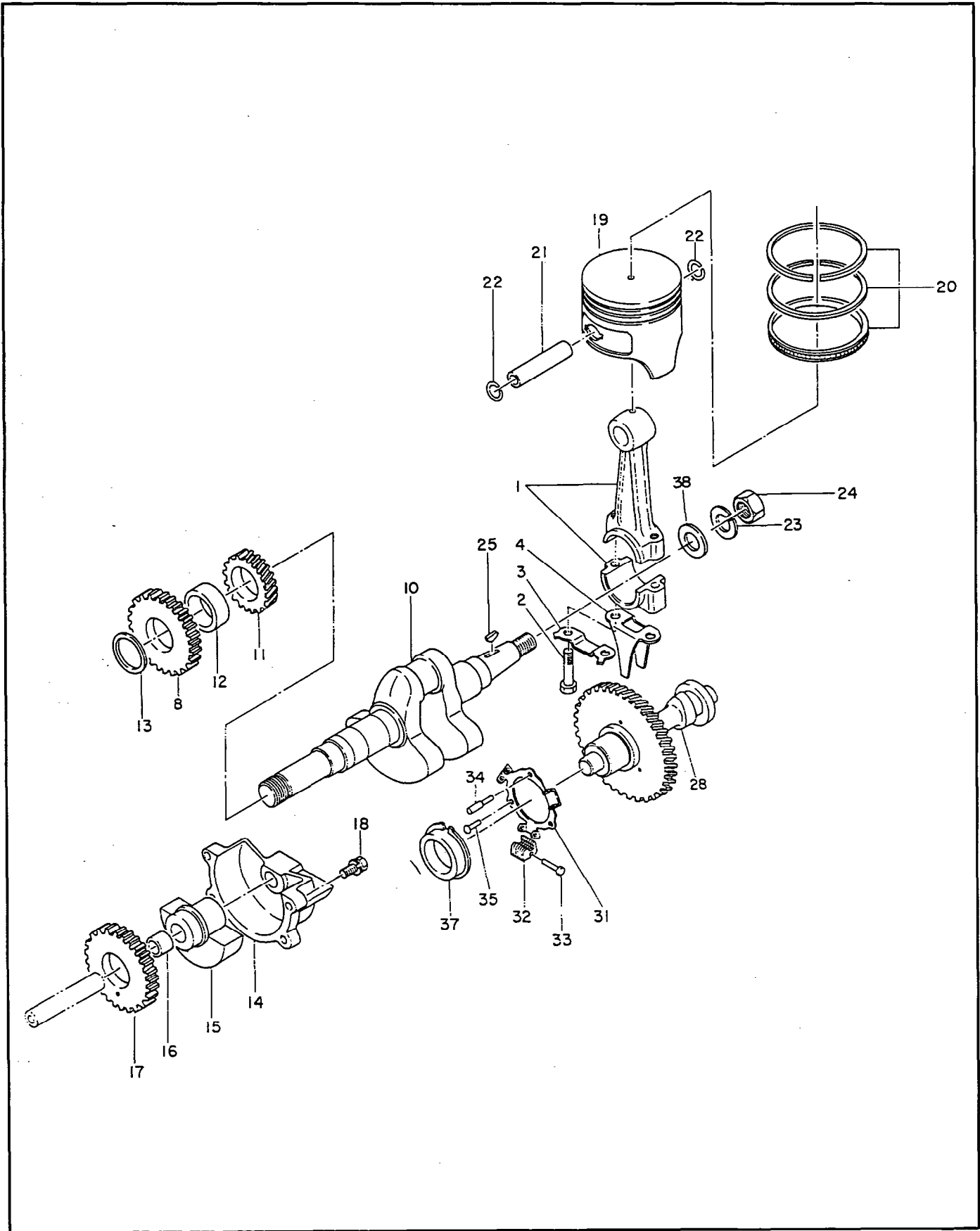




FIG.4 VALVE AND TAPPET

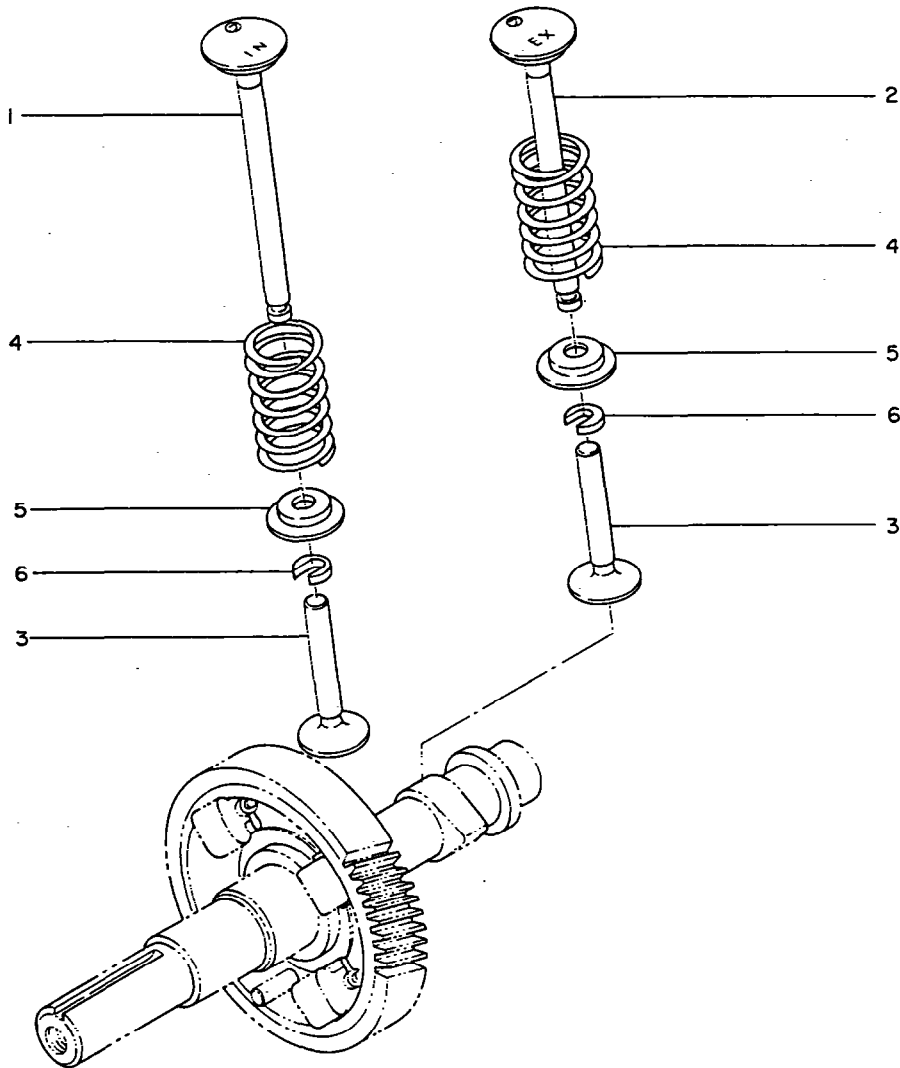




FIG.5 GOVERNOR

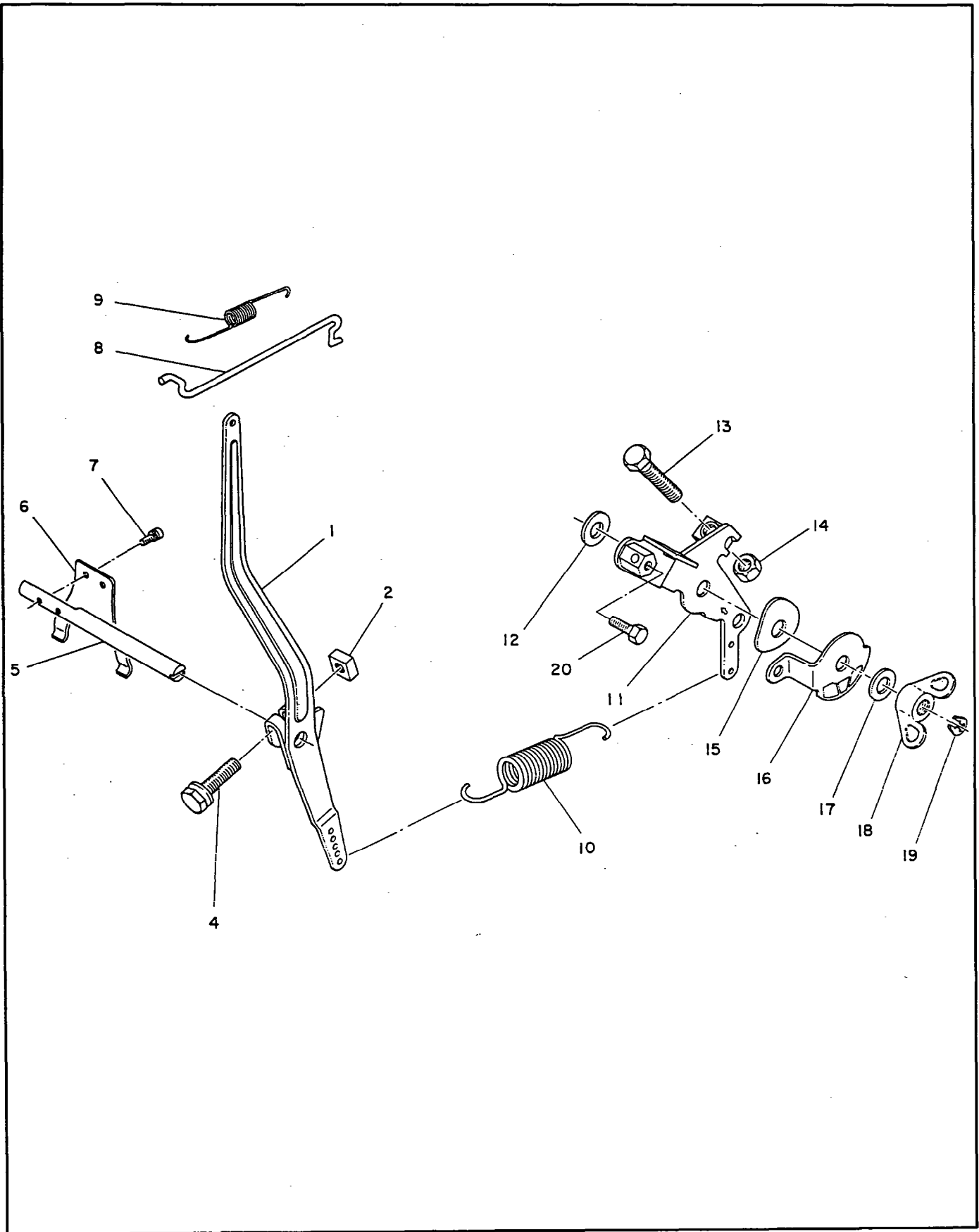




FIG.6 BLOWER HOUSING AND MUFFLER

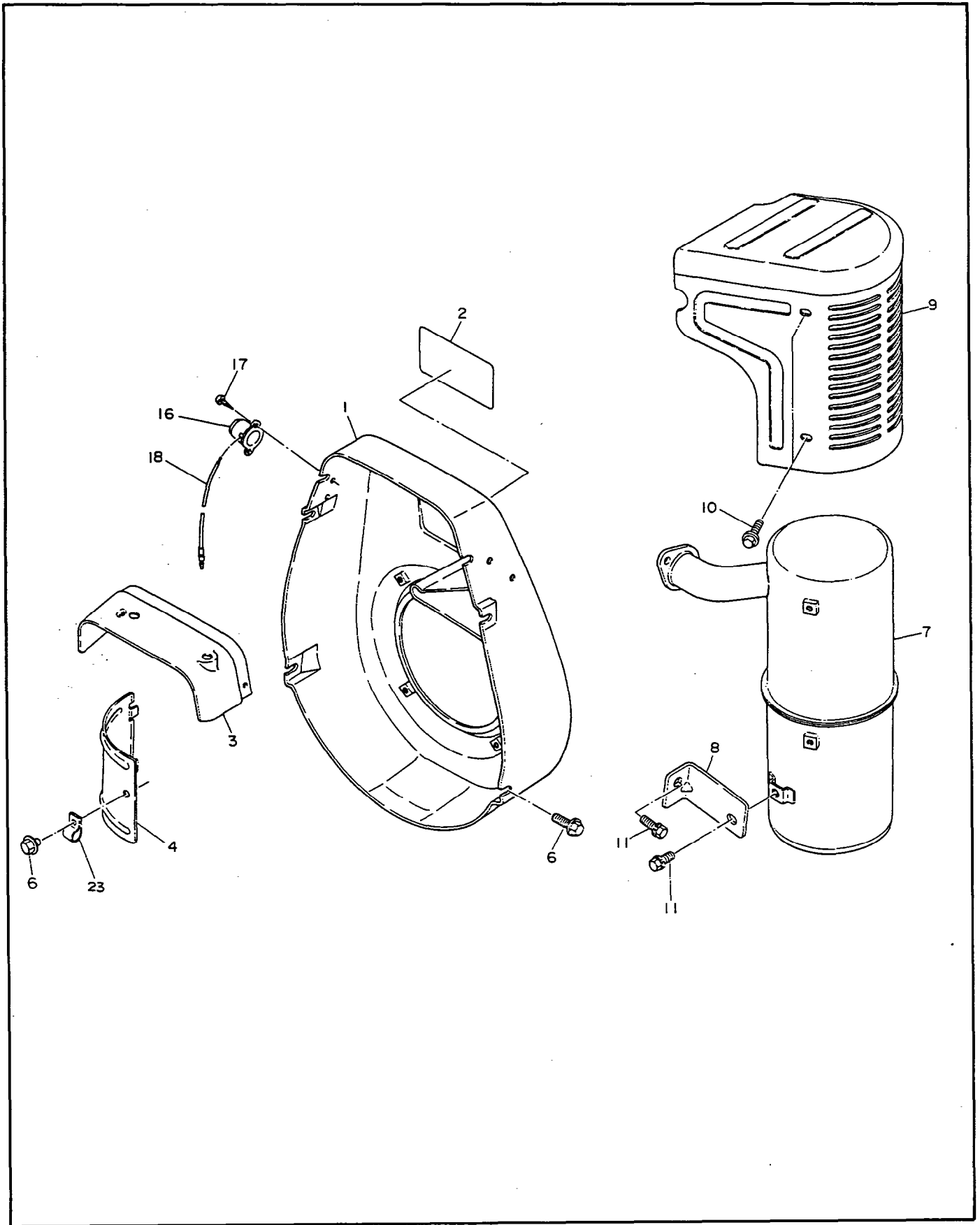




FIG.7 RECOIL STARTER

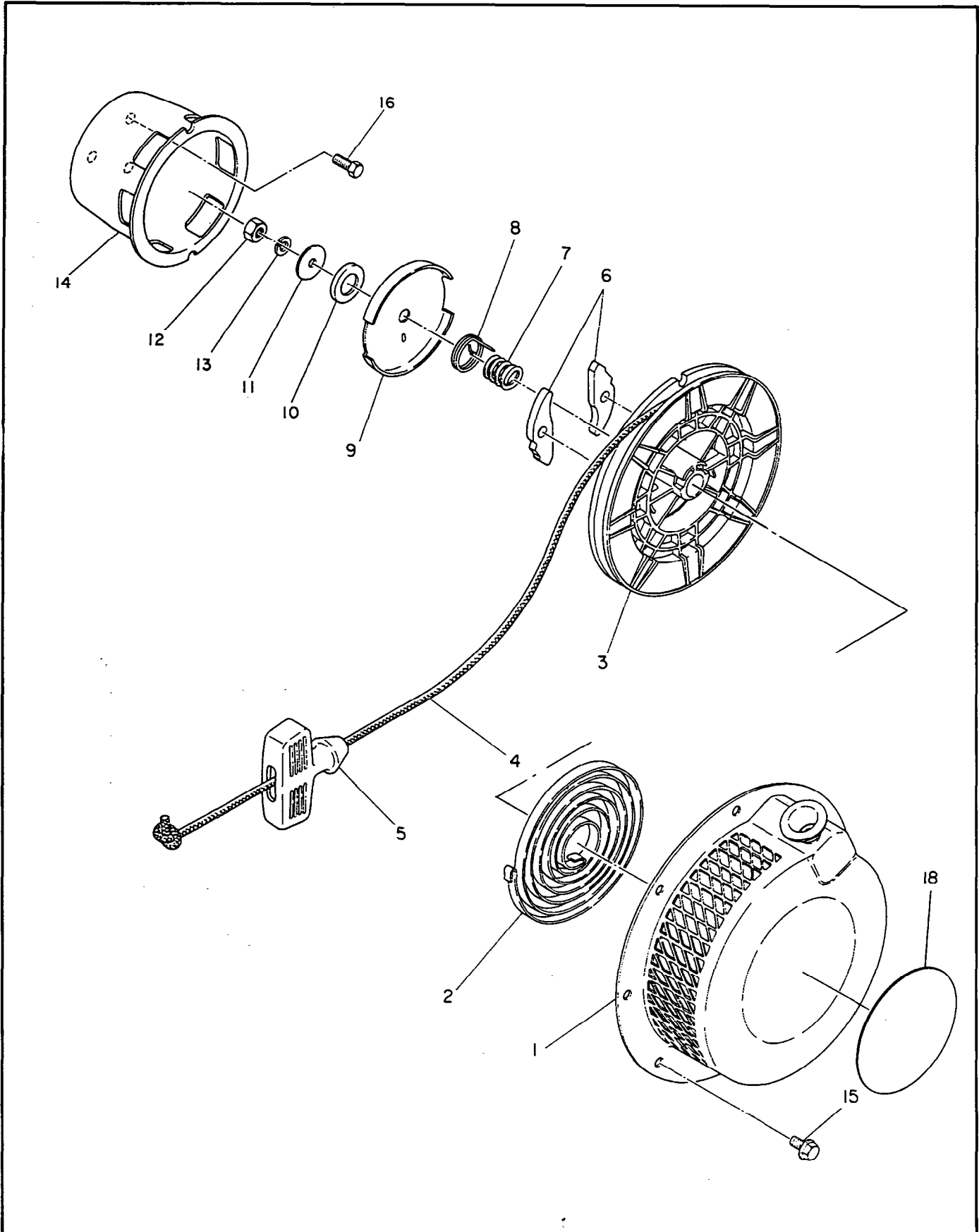




FIG.8 FUEL TANK

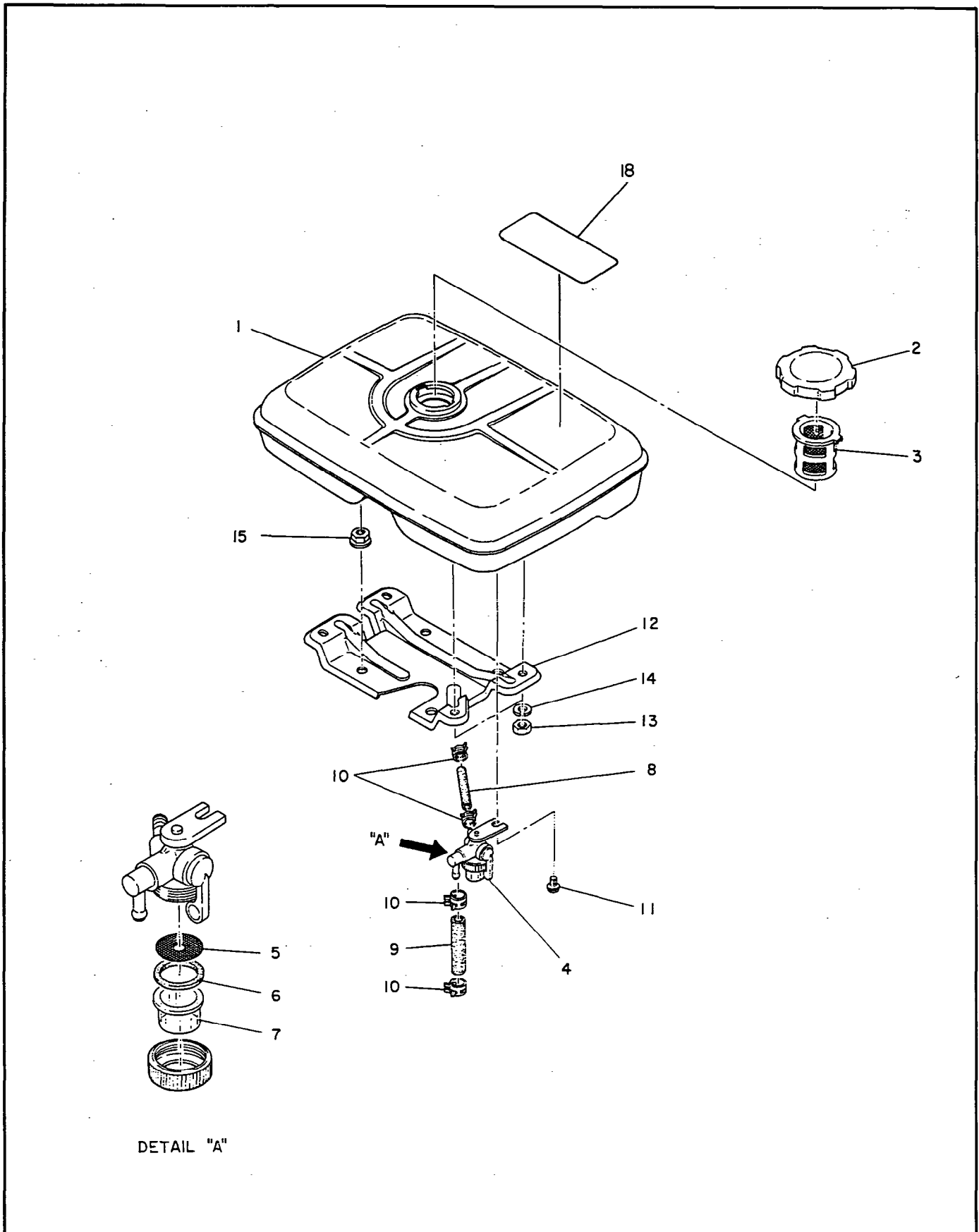




FIG.9 AIR CLEANER AND CARBURETOR

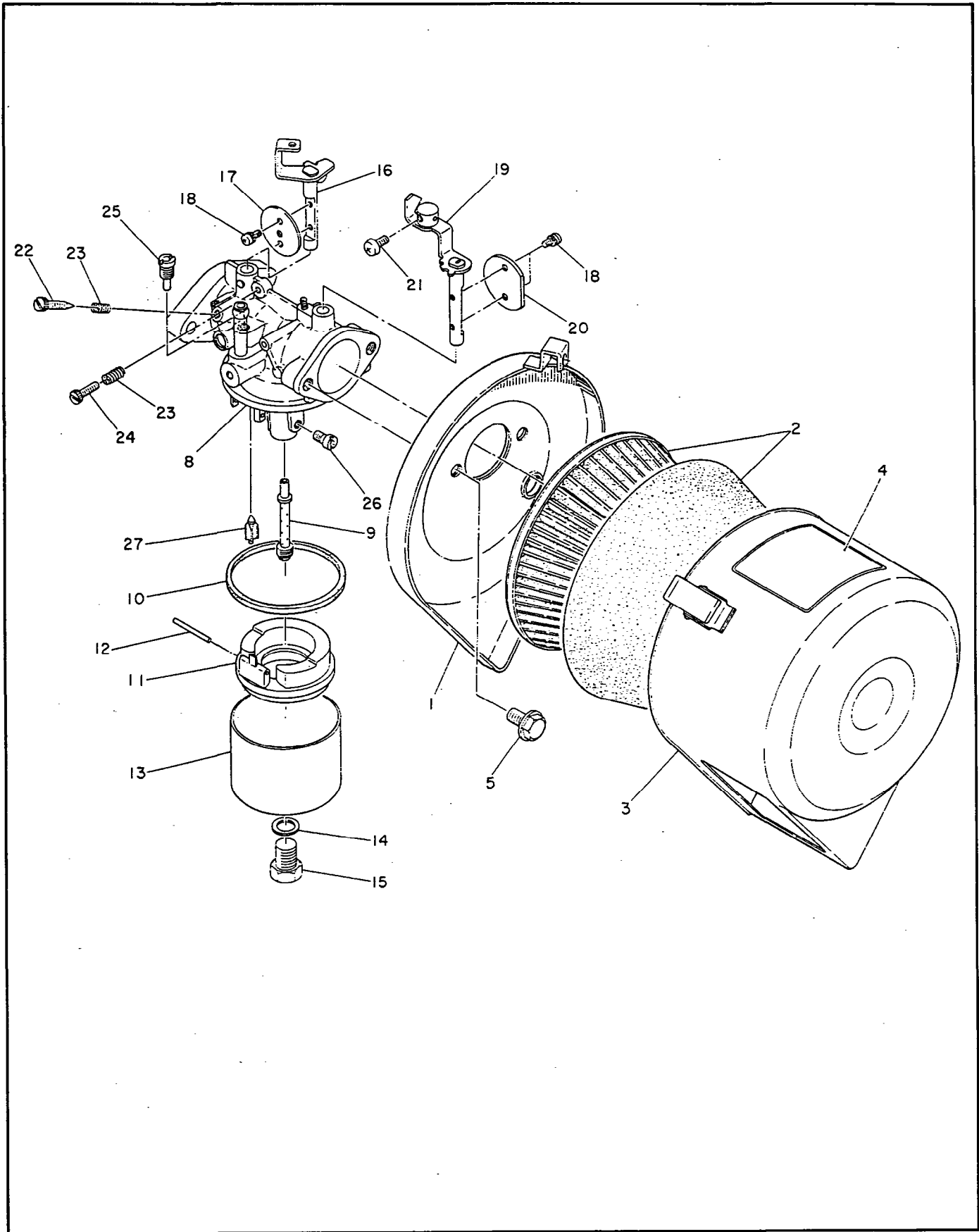








FIG.11 OIL SENSOR

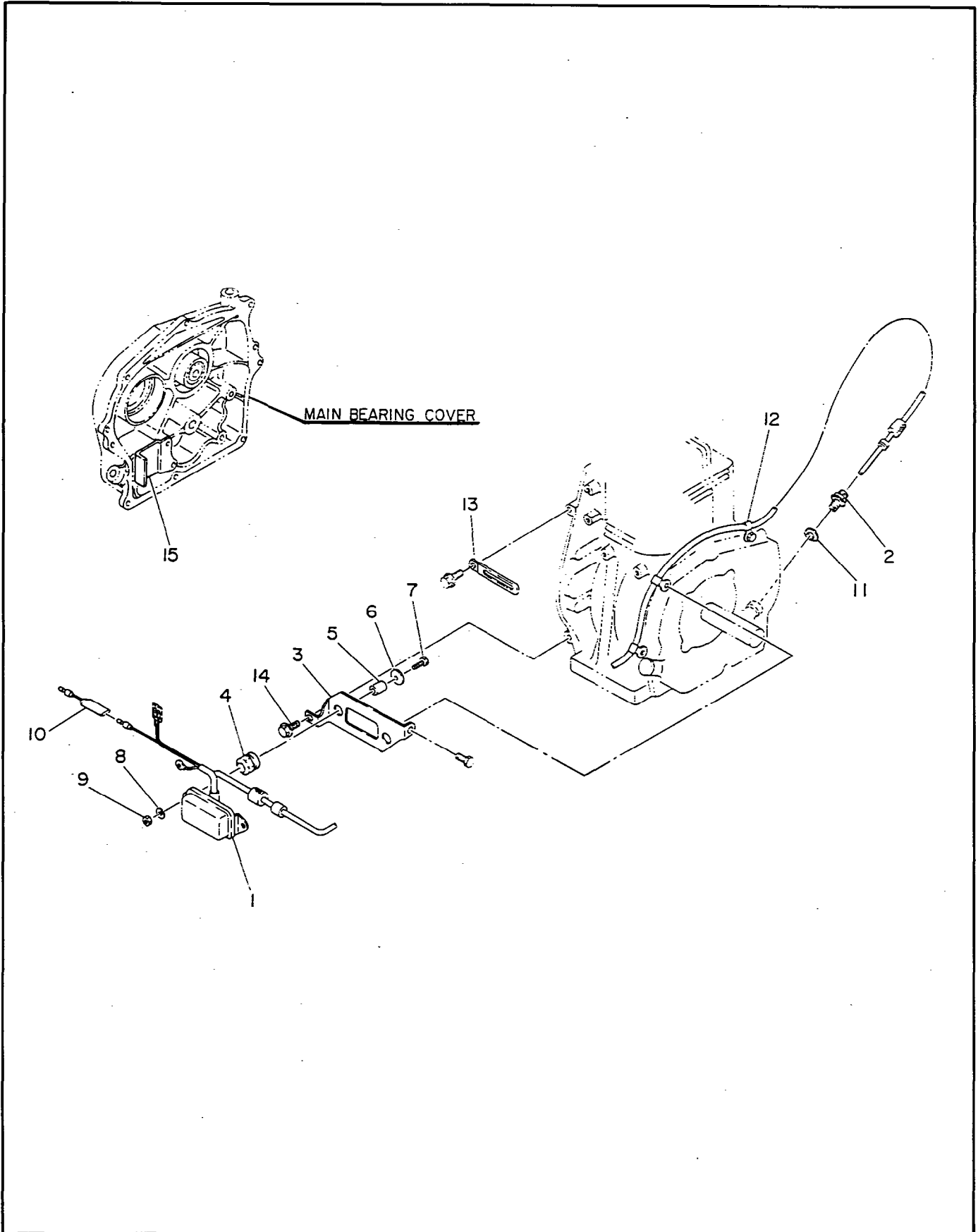
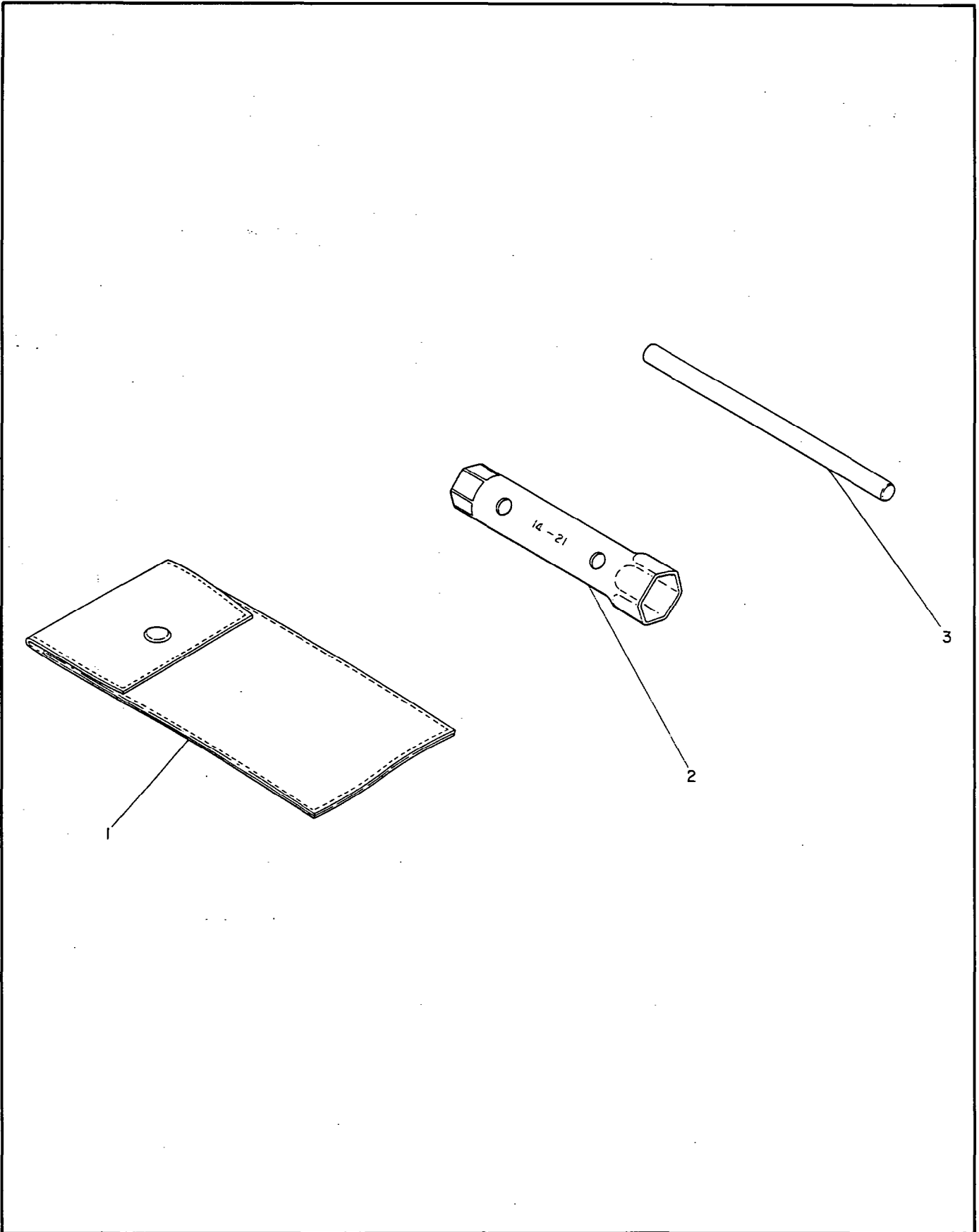




FIG.12 ACCESSORIES











# **FUJI HEAVY INDUSTRIES LTD.**

**— Engine & Machinery Export Sales Dept. —**

39th Floor, Shinjuku Mitsui Bldg.

2-1-1, Nishi-Shinjuku, Shinjuku-ku, Tokyo 163 Japan

TEL: (TOKYO 03) 347-2414, 5 TELEX: 232-2401 FUJI J

CABLE ADDRESS: FUJIHEAVY TOKYO