

HOW TO USE THIS PARTS CATALOG

1. Reference numbers with an asterisk


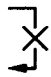

Reference numbers marked with an asterisk indicate that the particular part is available only as a complete set or assembly.

Example :

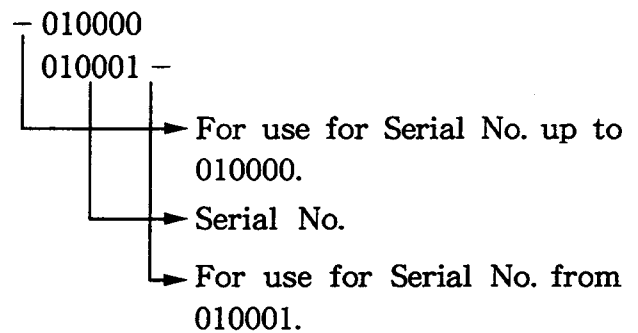
If the reference number is marked with an asterisk and the description of the part states that certain items are included, this means that those included items cannot be ordered separately and must be purchased as a complete assembly.

2. Description of interchangeability and execution columns

Example : Interchangeability column

-  Items interchangeable between the new and old parts.
-  Items not interchangeable between the new and old parts.
-  Items conditionally interchangeable between the new and old parts which are subject to the description in the execution column.

Example : Execution column



Example : Interchangeable




Part Number	↓	Execution	Explanation
Part B Part A		020000 -	This indicates that Part A changed to Part B for pumps with serial numbers from 20000, and that they are interchangeable.
Part C Part B Part A		020000 - 015000 -	This indicates that Part A changed to Part B for pumps with serial numbers from 15000, and that they are not interchangeable. Also, Part B changed to Part C for pumps with serial numbers from 20000 and that they are interchangeable.
Part A		020000 -	This indicates that Part A is a new part for pumps with serial numbers with from 20000.
Part B		- 030000	This indicates that Part B is no longer used for pumps with serial numbers from 30001.
Part B Part A		020000 -	This indicates that Part A changed to Part B for pumps with serial numbers from 20000, and that they are conditionally interchangeable. (See NOTE described at the end of the section.)

FIG. 1 PUMP(PTG305T)

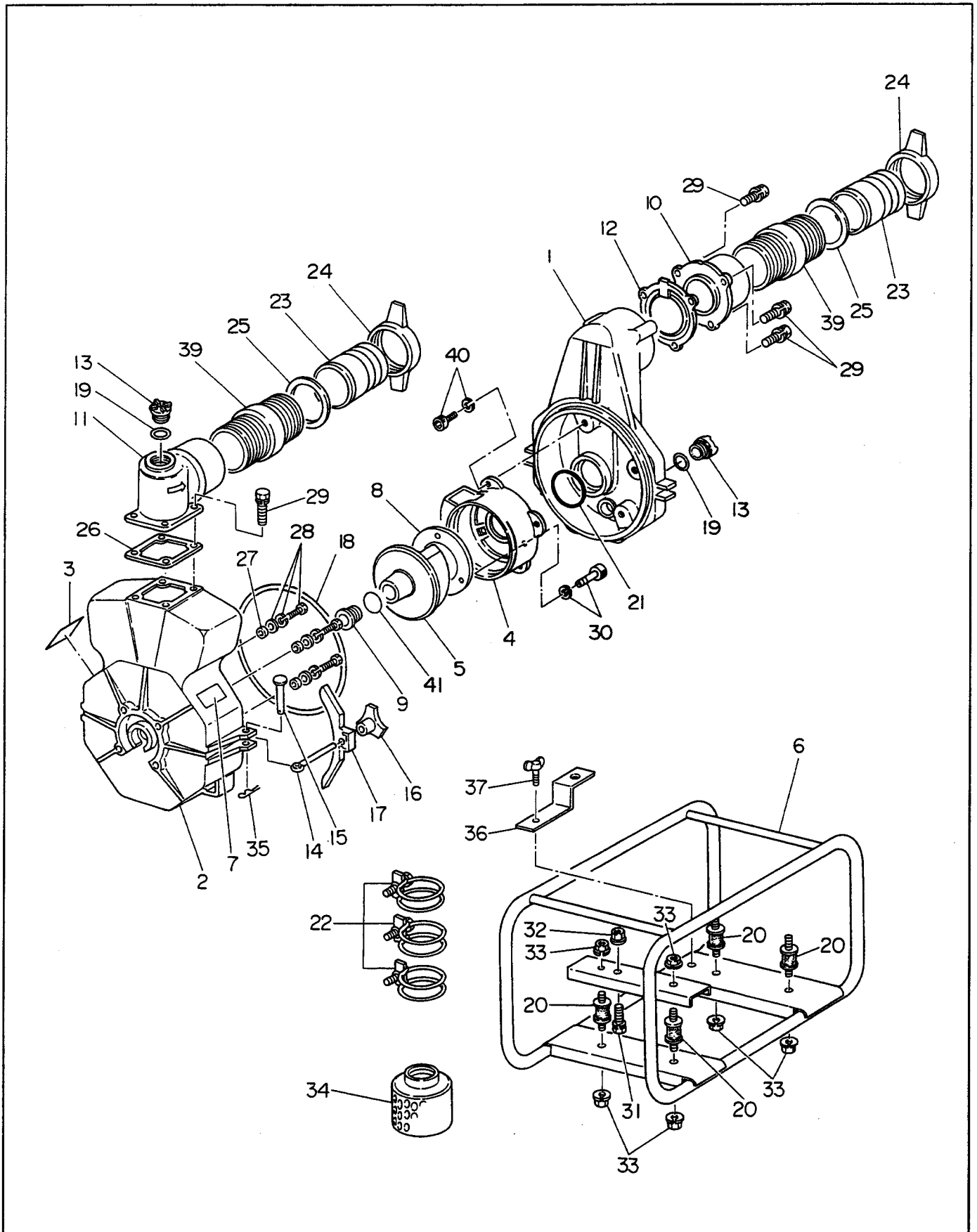


FIG. 1 PUMP(PTG305T)

↙ Interchangeability

Ref. No.	Parts Number	Description	Q'ty		Execution
1	481 - 00000 - 68	CASING	1	✕	# 1037598~
1	480 - 08210 - 01	CASING	1		
2	480 - 08210 - 02	CASING COVER	1		
3	480 - 05210 - 37	CAUTION PLATE	1		
4	481 - 00000 - 69	INNER CASING	1	✕	# 1037598~
4	480 - 08210 - 03	INNER CASING	1		
5	480 - 08210 - 04	IMPELLER	1		
6	481 - 00001 - 42	FRAME	1		
7	482 - 00014 - 03	LABEL, pump name	1		
8	481 - 00000 - 70	LINER	1	✕	# 1037598~
8	480 - 08210 - 07	LINER	1		
9	480 - 08210 - 08	MECHANICAL SEAL	1		
10	481 - 00000 - 71	SUCTION FLANGE (NPT)	1	✕	# 1037598~
10	480 - 08210 - 09	SUCTION FLANGE (PF)	1		
11	481 - 00000 - 72	DELIVERY FLANGE (NPT)	1	✕	# 1037598~
11	480 - 08210 - 10	DELIVERY FLANGE (PF)	1		
12	481 - 00000 - 73	CHECK VALVE	1	⊙	
12	480 - 08210 - 11	CHECK VALVE	1		
13	480 - 08210 - 12	PLUG	2		
14	480 - 08210 - 13	COVER BOLT	2		
15	480 - 08210 - 14	RIVET	2		
16	480 - 08210 - 15	KNOB	2		
17	480 - 08210 - 16	CASING COVER HOLDER	2		
18	480 - 08210 - 17	PACKING, casing	1		
19	480 - 08210 - 18	"O" RING	2		
20	480 - 08210 - 19	CUSHION RUBBER	4		
21	480 - 08210 - 20	"O" RING, inner casing	1	✕	# 1037598~
21	481 - 00000 - 87	PACKING, inner casing	1		
22	480 - 08010 - 28	HOSE BAND	3		
23	480 - 08010 - 18	NIPPLE	2	✕	
23	480 - 08210 - 22	NIPPLE	2		
24	480 - 08010 - 16	COUPLING	2	✕	
24	480 - 08210 - 23	COUPLING	2		
25	480 - 08010 - 17	PACKING, nipple	2		
26	480 - 08010 - 20	PACKING, delivery flange	1		
27	480 - 05010 - 06	SEAL PACKING	4		
28	480 - 05010 - 05	BOLT and WASHER ASS'Y (M8 × 48)	4	⊙	
28	480 - 05210 - 27	BOLT and WASHER ASS'Y (M8 × 48)	4		
29	480 - 05010 - 03	BOLT and WASHER ASS'Y (M10 × 30)	7		
30	480 - 08210 - 29	SOCKET BOLT (M6 × 20)	3	⊙	
30	480 - 08210 - 29	SOCKET BOLT (M6 × 20)	2		
31	480 - 08210 - 30	BOLT and WASHER ASS'Y (M10 × 45)	2		
32	480 - 10010 - 25	FLANGE NUT (M10)	2		
33	480 - 10010 - 24	NUT and WASHER ASS'Y (M8)	6		

