



PATIOMASTER Outdoor Heater

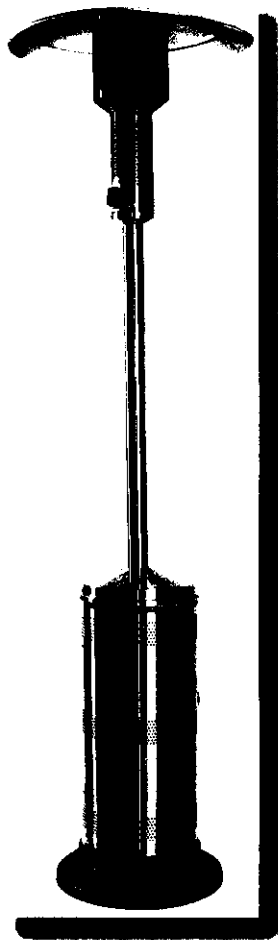
Winter will never be the same!

SCANNED

Patio Heater e Trolley LPG

Machine Type: 1632

Manual : 342



Maxiheat Patiomaster portable outdoor heater
Designed for outdoor use only
AGA approval no. 6752
Tools required: 1 phillips head screw driver
1 adjustable spanner

Congratulations on your purchase of a Patiomaster outdoor heater! This attractive heater has been especially designed to heat an outdoor patio area with excellent efficiency and heat output.

SAFETY

Australia has an excellent safety record when it comes to gas appliances. This reflects both the quality of appliances sold, as well as growing consumer awareness about safe practice. To ensure safe use of your outdoor heater we would like to draw your attention to these essential safety requirements:

- Do not alter or modify the heater in any manner.
- Use the specified gas type only. This is found on the data plate attached to the control panel.
- Conduct a leak test before each use.
- Do not adjust gas regulators. If your unsure of your appliances gas type or pressure, call a gas fitter or plumber.
- Do not touch this appliance whilst in use.
- Always disconnect the gas supply after the heater is turned off and has cooled down.
- Allow 30 minutes to cool down after use before attempting to move your heater.
- Children and adults should be alerted to the hazards of high surface temperatures, burns and clothing ignition.
- Young children should be carefully supervised when they are in the vicinity of the appliance.
- Do not clean heater with combustible or corrosive cleaners. Use warm, soapy water.
- DO NOT SPRAY AEROSOLS IN THE VICINITY OF THIS APPLIANCE WHILE IT IS IN OPERATION.
- DO NOT PLACE ARTICLES ON OR AGAINST THIS APPLIANCE.
- DO NOT STORE FLAMMABLE MATERIALS NEAR THIS APPLIANCE

Your heater is equipped with an automatic flame failure device which prevents gas from flowing unless there is a flame. If the flame goes out, the heat probe cools down and automatically shuts the flow of gas.

WARRANTY

1. Warranty Term

Subject to the conditions set out below, this product is warranted to the original purchaser to be free from defects in workmanship and materials for 12 months from the date of purchase.

2. Warranty Conditions

- 2.1 Satisfactory proof of the purchase date must be furnished at the time of notification of the defect for any claim under the warranty to be enforceable.
- 2.2 This warranty covers all parts found to be defective in workmanship and/or materials during the warranty period and will be repaired or replaced at the discretion of the manufacturer at no cost to the original purchaser.
- 2.3 This warranty will be void and accordingly no claim of any nature whatsoever will be enforceable if the product has not been assembled, installed or operated according to the instructions, subjected to abuse, improperly treated, neglected, rusted by exposure to the elements, misused and/or if any repairs, maintenance, or service has been done by an unauthorized person.
- 2.4 Returns must be properly packaged and prepaid to the dealer from whom the product was acquired.
- 2.5 Each of the manufacturer, distributor and retailer will not be liable for any incidental or consequential loss or damage arising from the installation or operation of the product and/or the failure of any part for any reason whatsoever.
- 2.6 There are no warranties, express or implied, except for those stipulated herein. This warranty gives specific rights and the original purchaser may have additional rights and remedies in law.
- 2.7 This warranty does not cover commercial use.

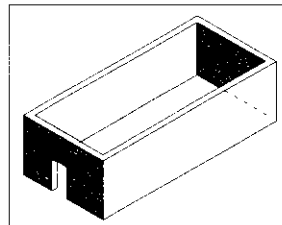
WHERE TO PUT YOUR HEATER

Location

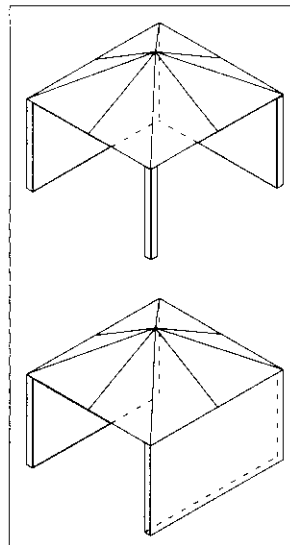
- THIS APPLIANCE SHALL NOT BE INSTALLED OR USED INDOORS.
- This heater shall not be used in a building, garage, or any other enclosed area.
- Ensure combustible material such as paper, wood, leaves etc are more than 1000 mm above the heater, and more than 600 mm away from the sides.
- Always position heater on a firm level surface.
- Do not use this heater on boats or any other water craft.
- Do not operate this appliance in windy conditions. Maximum wind speed of 20km/h.
- Ensure the hose is kept away from pathways or areas where it may be subject to accidental damage.
- Do not operate this appliance in temperature conditions below minus -18°C.
- Clothing or other flammable materials should not be hung from the appliance, or placed on or near the appliance.
- Keep the heater away from areas where flammable liquids, vapours or explosives are stored or used.
- Be aware that strong radiant heat is emitted from this heater. Certain materials or items, when stored under or near the appliance, will be subject to this heat and could be seriously damaged.
- This heater must be installed by an authorised person in accordance with AS5601/AG601 gas installation code, all applicable building regulations, and the requirements of local authorities.

Partial Enclosures

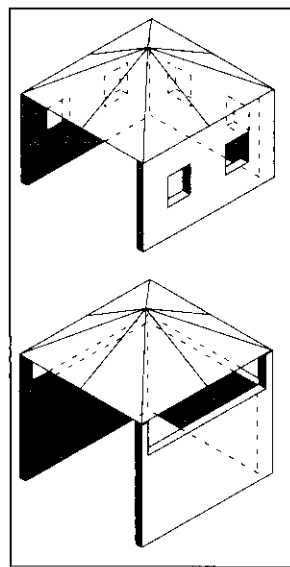
This appliance shall only be used in an above ground, open air situation with natural ventilation, without stagnant areas, where gas leakage and products of combustion are rapidly dispersed by wind and natural convection. Any enclosure in which the appliance is used shall comply with one of the following:



Any enclosure with walls on all sides, but at least one permanent opening at ground level, and no overhead cover.



Within a partial enclosure that includes an overhead cover and no more than two walls.



Within a partial enclosure that includes an overhead cover and more than two walls, the following shall apply:

- At least 25% of the total wall area is completely open; and
- at least 30% of the remaining wall area is open and unrestricted.

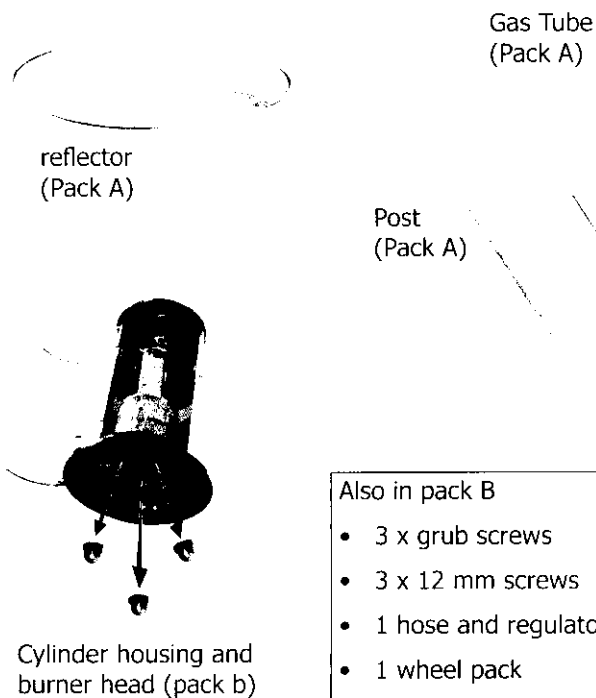
In the case of balconies, at least 20% of the total of the side, back and front wall areas shall be and remain open and unrestricted.

ASSEMBLY

1. Unpack The Cartons

Your heater is packaged in two separate cartons, A and B. Unpack the cartons carefully and ensure all parts are present.

To aid in packaging and transport, the burner head is screwed inside the cylinder housing. Remove the three screws to release the burner head. Keep the nuts, as they will be used later during the assembly.



2. Connect Gas Tube To Burner Head

Have a look at the gas tube: one end has a larger threaded fitting, which will go down into the cylinder housing (step 4). The other end shown on the right, goes into the burner head.

Attach the tube to the burner head by pulling back the tube collar, and pushing the tube into the inlet at the bottom of the burner head.



3. Test For Leaks Before Proceeding

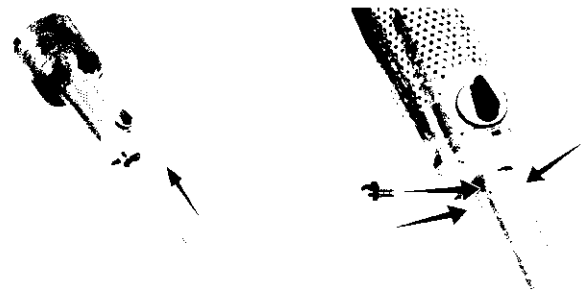
Even though the connection is designed to be leak-proof without the use of special sealants, etc, it is always advisable to leak test after forming any joint before proceeding further.

- Ensure that the control knob on the burner head is "OFF".
- Connect one end of the hose and regulator to the lower end of the tube. Connect the other end of the hose and regulator to the gas supply and turn on. Apply a dishwashing soap and water solution to the connection between the tube and the burner head. If the connection is leaking you will see bubbles form. Do not use a naked flame to test for leaks.
- In the case of any leaks, turn "OFF" the gas supply, remove the tube, check and clean the connection. Re-connect and try again. If the leak persists consult your store of purchase for assistance and advice.
- Once the testing is complete and there is no sign of a leak, turn "OFF" the gas supply and disconnect the hose from the gas tube and continue on to the next step.

4. Connect Post To Burner Head

Lie the gas tube and burner head down on its side. Take the post so that the three screw holes are towards the top. Now slide the post over the tube until the post is all the way up to the collar of the burner head.

Align the three holes and insert the three 12mm bolts in the positions shown with the arrows. Tighten with your shifting spanner.



5. Remove Disk

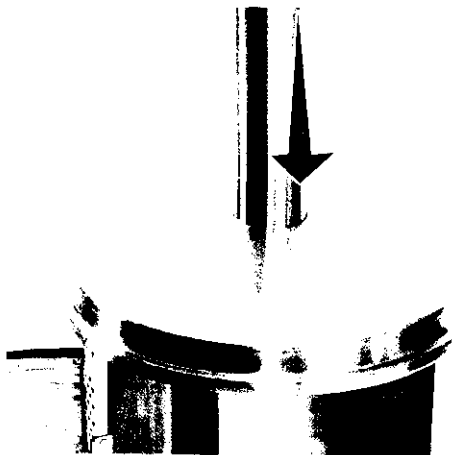
Temporarily remove the disk from the bottom of the tube support shaft, inside the cylinder housing.



ASSEMBLY

6. Fit The Burner Head and Tube

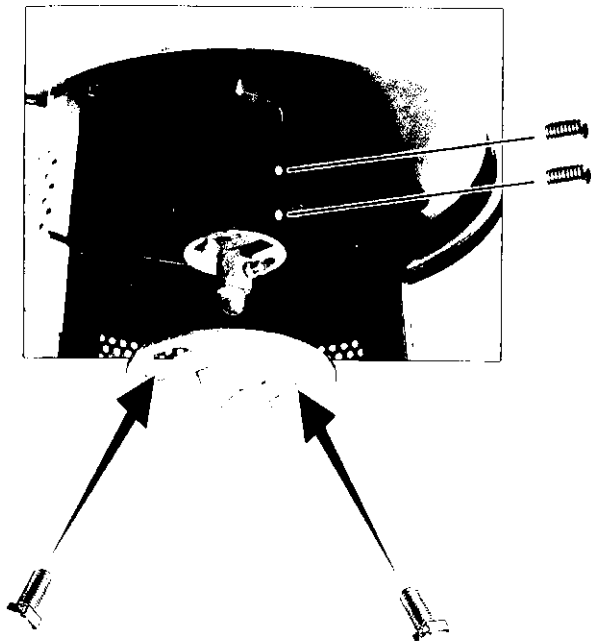
Insert the post through the hole in the top of the cylinder housing, ensuring it is pushed down as far as it will go. Twist the post around so that the control knob on the burner head lines up with the centre of the base door opening.



7. Secure The Gas Tube

Replace the disk that was removed in step 5. You may need to rotate the gas tube and/or the disk to enable the screws to go through.

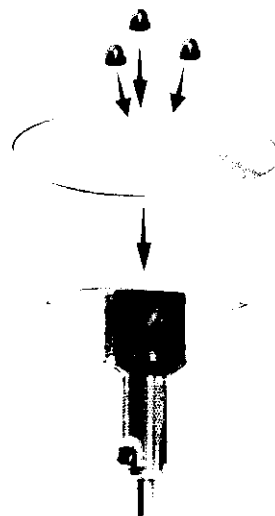
Insert two grub screws (ie screws without heads) into the holes in the support housing as shown. Using the allen key provided, screw them in until they press against the post and restrict its movement.



8. Attach The Dome

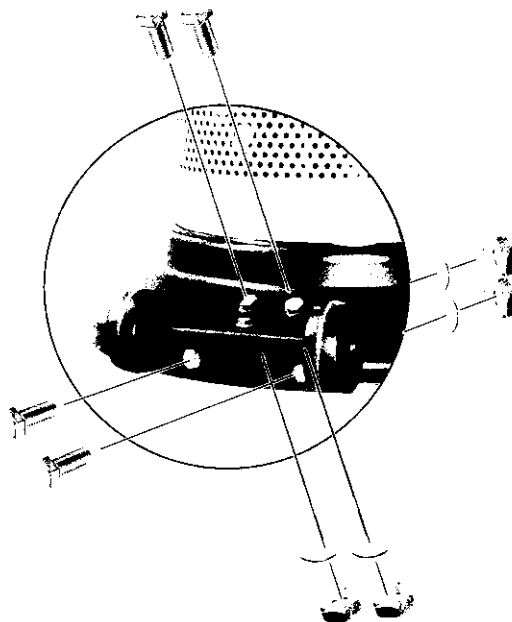
Place the dome onto the burner head by lining up the 3 reflector dome holes with the 3 studs protruding from the top of the burner head. You may find it easier to lay the heater on its side.

Attach the 3 nuts (removed from assembly instructions step 1) and spanner tighten.



9. Attach The Wheel Assembly

Screw the wheels to the base of the housing as shown.



OPERATION

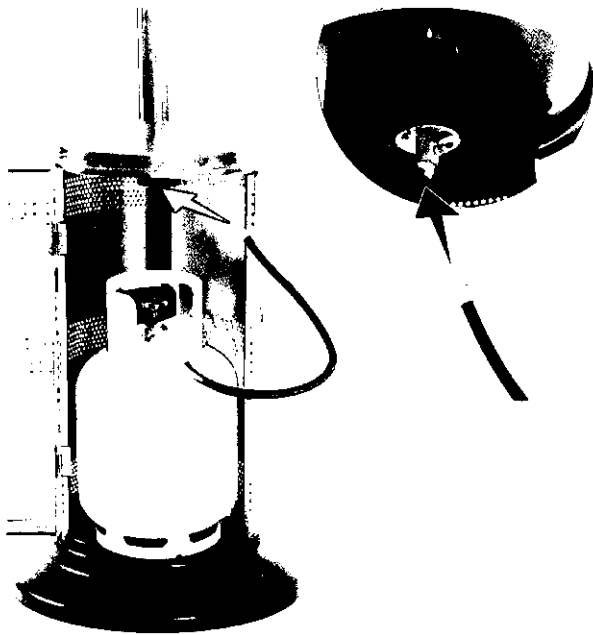
Connecting to Gas

Ensure that the control knob on the burner head is "OFF".

Connect the hose and regulator to the inlet of the gas tube and spanner tighten clockwise.

Place the cylinder inside the base of your heater. Connect the gas regulator to your cylinder (anti-clockwise) and tighten. We recommend using a 9kg cylinder with your heater.

Use only the regulator and hose supplied with the appliance, or a manufacturer authorised replacement.



Leak Test

Leave the burner head in the "OFF" position and turn on the gas supply.

Apply a dishwashing soap and water solution to the connection between the hose and the gas tube inlet, and to the connection between the hose and the gas supply. If the connection is leaking you will see bubbles form. Do not use a naked flame to test for leaks.

In the case of any leaks, turn the gas supply off, undo the leaking connection, check and clean the connection. Re-connect and try again.

If the leak persists consult your store of purchase for assistance and advice.

Purging the Gas Line

When the hose is connected or reconnected to the gas tube inlet, you need to replace the air in the gas lines with gas before it will operate correctly. To do this:

- Open the cylinder or turn on the gas
- Press the control knob on the burner head inwards, then turn it to high. Keep the control knob in for about 5 seconds, then turn off again. This should allow enough gas to flow and replace the air that is in the gas lines.

Turn The Heater On

Always check the hose before operating. If there are signs of wear or cracking, replace the hose and regulator immediately with an identical part.

Open the cylinder if it is not open already. Press the control knob inwards, then turn it to high. Keep the control knob in for about 15 seconds, and release. This should give the heat probe enough time to warm up and stay on. If the burner does not light, turn the knob to off, wait a few seconds, then repeat.

If the heater does not light, check the following:

- Does the gas cylinder contain gas? Is it turned on?
- Check if the spark igniter is working by looking from underneath the burner head. If you cannot see the spark you may use a lighted match.

If the heater still does not light, an authorised technician or installer should check if the pilot jet is blocked.

If necessary, consult your place of purchase. Note: failure to follow these procedures could lead to a dangerous situation.

Check The Flame

Whilst in use the burner flame should be mainly BLUE in appearance with a small amount of YELLOW.

If you smell gas whilst in use, immediately turn the heater "OFF". Consult your store of purchase if satisfactory performance cannot be obtained.

Gas Freeze

The flame and the heat output of your heater may be reduced if the liquid in the LPG cylinder is allowed to freeze. This can occur if:

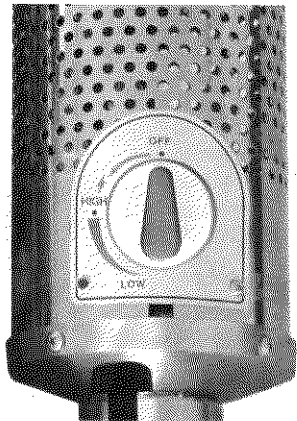
- Outdoor temperatures are very low, or
- The cylinder is low on gas.

Where this happens, it is best to turn the heater off, wait till the liquid thaws and relight.

OPERATION

Controlling The Heat

You can leave the flame on high, or turn it down at any time by rotating the knob to low.



Turning Off

To turn off, rotate the control knob to the off position.

It is best to turn the gas off at the cylinder after use by rotating the control valve on the cylinder clockwise.

Note: failure to follow these procedures could lead to a dangerous situation.

Disconnecting The Gas

You should disconnect the gas before moving the appliance and prior to storage.

- Turn the gas off at the cylinder.
- Remove the hose and regulator from the gas supply. Note: it is best to leave the hose & regulator attached to the gas tube inlet.
- Wrap or tie a bag over the open end of the hose and regulator to stop spiders and insects from nesting inside the hose.

Changing/Refilling Cylinder

To change or refill your gas cylinder:

- Turn the gas off at the cylinder.
- Disconnect the hose and regulator from the cylinder.
- Refill or exchange your cylinder with another.
- Place the cylinder inside the base and reconnect the hose and regulator.

Storage

Allow 30 minutes for the heater to cool down before moving.

Store the heater upright in a sheltered area away from inclement weather, wind and dust.

Storage of the appliance indoors is permissible only if the cylinder is disconnected from the appliance.

If you intend to cover your heater, ensure that it is cool before doing so.

Store the gas cylinder outdoors in a cool, dry well ventilated area out of the reach of children.

Maintenance

To obtain the best performance from your outdoor heater make sure you perform the following cleaning and maintenance activities on a regular basis:

- You should have this appliance inspected and serviced by a qualified service agent every 5 years.
- Keep the exterior surfaces clean by wiping down with a warm damp cloth. Do not use any flammable or corrosive cleaning agents.
- It is vital that the burner head and in particular all air holes be kept clean.
- Clear insect nests or webs away from your heater's exterior and interior, and from the ends of the hose.
- If required, clean black carbon deposits away from the burner head and dome immediately after the heater has cooled.
- Check your heater for signs of damage or wear and replace components as necessary.

Service

Service and repairs must be performed by a licensed gas fitter/plumber only, or by a manufacturer's representative.

Use original equipment replacement parts, available from the manufacturer.

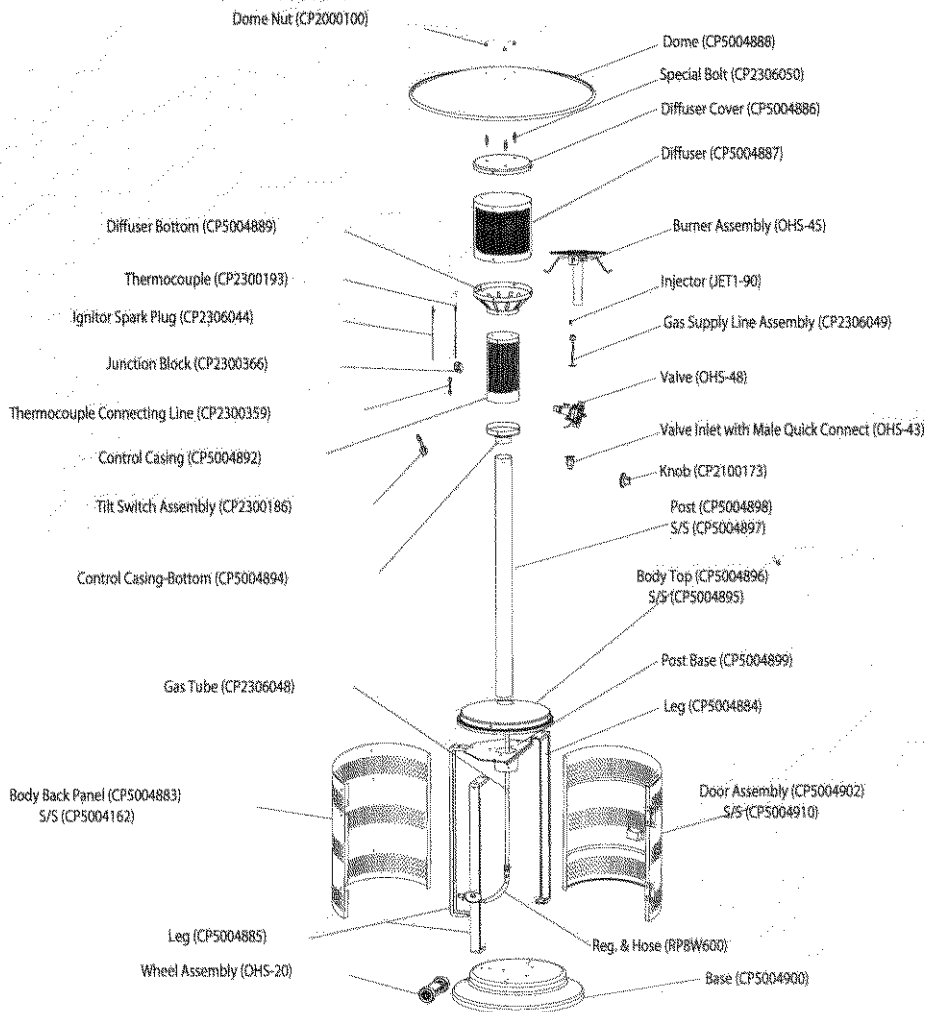
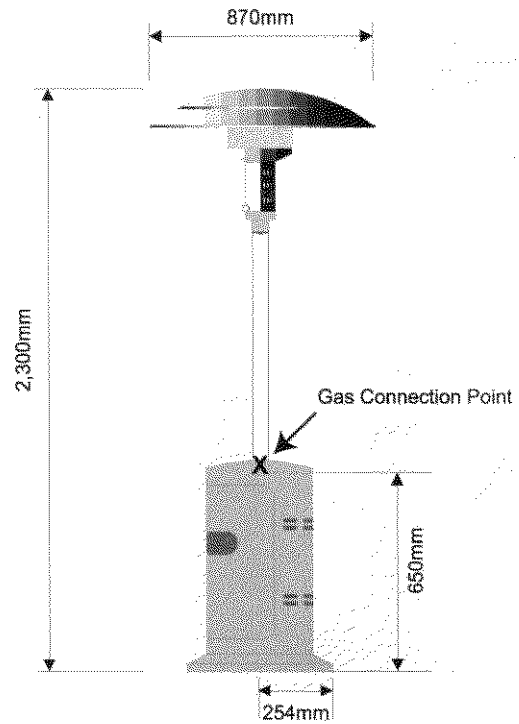
TECHNICAL

Specifications

	LPG
Gas Consumption- HIGH:	45 MJ/hr
Gas Consumption - LOW:	25 MJ/hr
Injector Orifice - Burner:	1.90 mm
Operating Pressure:	2.75 kPa
Inlet:	3/8" SAE Flare

Full details can be found on the appliance data plate

Spare Parts



G.L.G. Australia Pty Ltd (acn 001 185 002)
 Building A2, Campus Business Park, 350-374 Parramatta Road Homebush NSW 2140
 Ph. 02 9735 4111