

## IMPORTANT

### DON'T VACUUM WATER, DAMP OR WET SURFACES

Water and electricity don't mix, so please do not vacuum wet surfaces. If you need wet pick up, use the correct machinery for the job.

If, however, you do accidentally pick up moisture or water, ensure that the unit is checked before re-using.

#### NOTE:

Should this occur, remove the unit from your back as quickly as possible and remove the cord/plug from the power point in the proper manner.



Rocket Vac has been tested to International and Australian Electrical Standards and is fully approved by Standards Australia for Electrical Safety.

## ADDED FEATURES

1. The frame and harness of this unit has been designed in consultation with Ergonomic and Industrial Design Consultants.
2. This unit has been fitted with Radio Frequency Noise Suppression devices to reduce interference with surrounding electrical appliances.
3. The motor is electrically protected by an automatic reset thermostat to prevent overheating should an accidental blockage of the vacuum hoses occur.



### SPARE PARTS AND SERVICE

To order spare parts or to arrange service, check the parts required in the drawing and match them to the corresponding part number in the list.

Please quote the part number when ordering.

Parts can be ordered through your nearest Hako Australia distributor.

### 12 MONTHS WARRANTY AGAINST FAULTY PARTS OR WORKMANSHIP\*

\*Excluding fair wear and tear and consumable items.

# MAINTENANCE AND STORAGE

Here is a quick guide to maintaining and servicing your Rocket Vac for maximum cleaning efficiency.

## VACUUM BAG MAINTENANCE



The dust bag must be emptied frequently, especially after cleaning heavily soiled carpet and when using the Powerhead.

To clean, push dust bag inside out over the bin, then brush gently with a soft bannister brush.

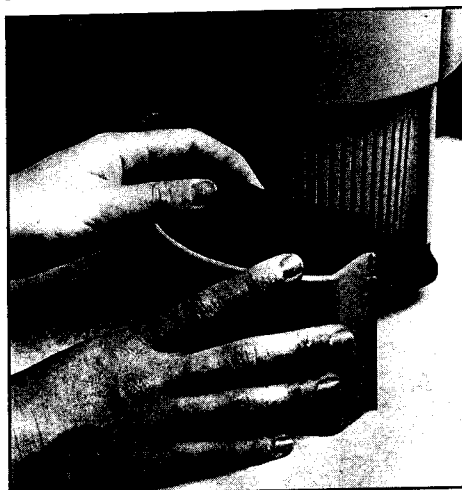
## SECONDARY FILTER MAINTENANCE



The secondary filter is located beneath the dust bag and is easily removed for cleaning.

The filter can be cleaned by washing it in water. Ensure it is dry before refitting.

## REMOVING AND CLEANING AFTER FILTER



Remove countersunk head self tapping screw from end cap. Slide exhaust deflector clear of end cap then gently squeeze to remove. Clean the after filter by washing in water. To replace reverse the above procedure.

## MAINTAINING ELECTRICAL LEAD



Fractures or cuts can sometimes occur in normal day to day operations.

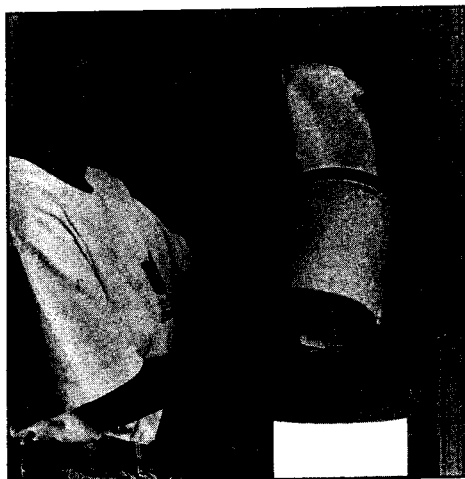
Before storing Rocket Vac each day and after removing plug from power point, run it through your fingers to check for fractures or cuts. A clean cloth held in the other hand will also remove soilage.

Ensure that the lead is over the cord restraint through the lead guide.



Always unplug the lead from the power point before gathering the lead from the machine end.

# FITTING EXTENDED FILTER BAG KIT



### STEP 1:

Remove vacuum bag and secondary filter.

### STEP 2:

Remove 4 screws with washers from the upper cannister.

### STEP 3:

Insert wire cage and hold captive using the 4 screws and washers from the upper cannister.

### STEP 4:

Replace secondary filter ensuring that the slits align with the wires on wire cage.

### STEP 5:

Turn flexible portion of dust bag inside out and place bag in cannister over the wire cage.

### STEP 6:

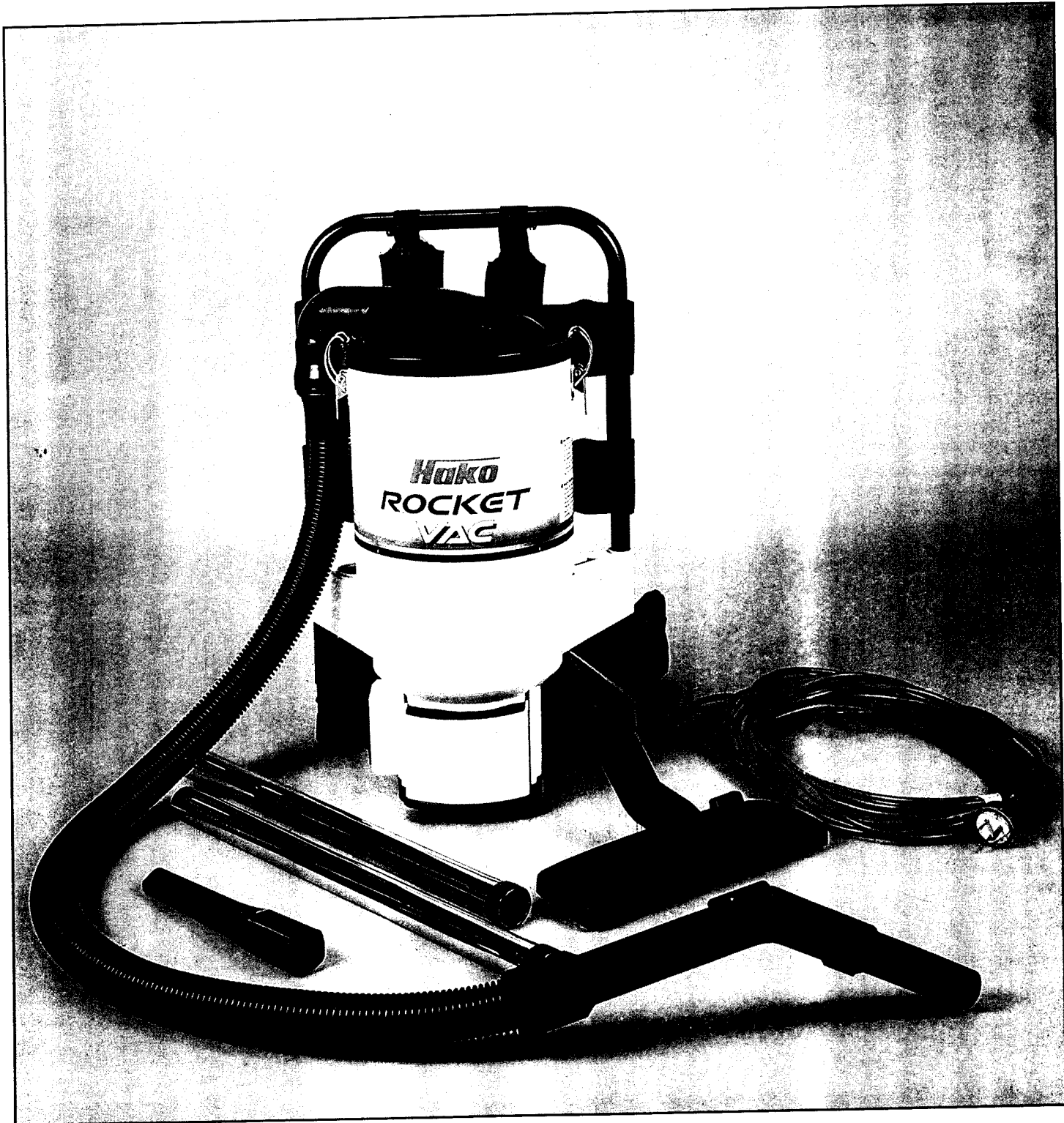
Insert extended portion of bag into the centre of the wire cage.

### STEP 7:

Fit special cannister lid to complete the assembly.

# ROCKET VAC

## OPERATION MANUAL AND PARTS GUIDE



# **Hako**

**HAKO AUSTRALIA PTY LIMITED**

ACN 002 858 059

6 Pike Street,

Rydalmere NSW 2116 Australia

PO Box 360 Rydalmere NSW 2116

Telephone: (02) 9684 2433 Facsimile: (02) 9684 2278

Quality System

Quality  
Endorsed  
Company

ISO 9002  
Lic. OEC10104  
Standards Australia

# ASSEMBLY AND ADJUSTMENT

## STEP 1: BASIC PARTS ATTACHMENT

Remove vac unit, hose, tube and combination floor tool from carton.

## STEP 2: ASSEMBLY

Attach hose end into cannister lid outlet. Attach extension tube to other end of hose. Attach combination floor tool to chrome wand.

## STEP 3: WEARING AND ADJUSTING ROCKET VAC CORRECTLY

Lift unit onto back placing each arm correctly through shoulder straps.

The most comfortable position for use is when the Rocket Vac is vertical on the operator's back. The position of the back strap is adjustable and should be adjusted to suit operator.

For correct vertical fit, click on the waist straps, buckle and tighten by pulling on the free end of the strap until the unit sits comfortably on the hips.

Then simply pull on the free ends of the shoulder straps until the unit is vertical and comfortable.



## STEP 4: THE MOST COMFORTABLE POSITION

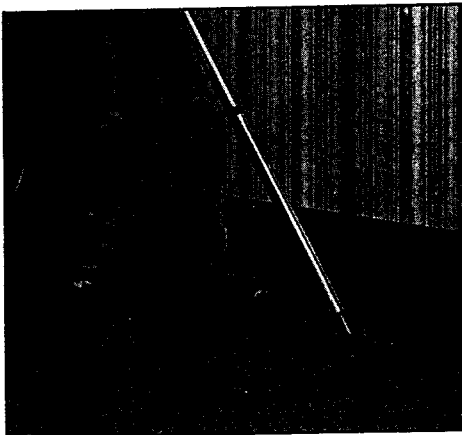
After adjusting shoulder and waist straps to ensure the unit is vertical and the operator is comfortable,

check that the unit is also level across the shoulder line — now you are ready to work quickly through your cleaning.



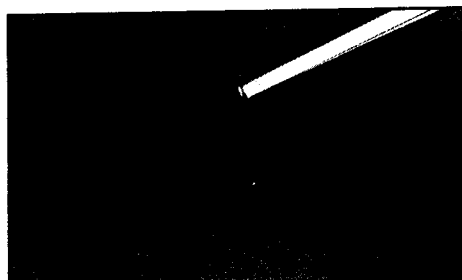
# HOW TO USE

## COMBINATION FLOOR TOOL



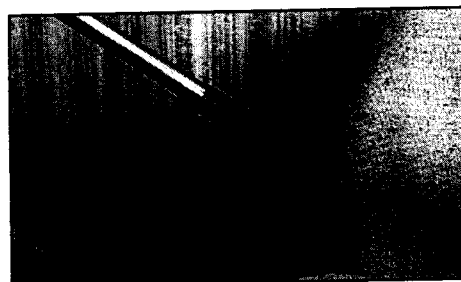
The combination floor tool is designed to be used on carpet and hard floor surfaces.

## CREVICE TOOL



Designed for crevice cleaning on upholstered furniture, the crevice tool can also be used for spot vacuuming. Its main advantage however, is to reduce the need for bending over when vacuuming edges.

## ROUND DUSTING BRUSH — (Optional) UPHOLSTERY CLEANING



Furniture and partitions are vacuumed with this tool.

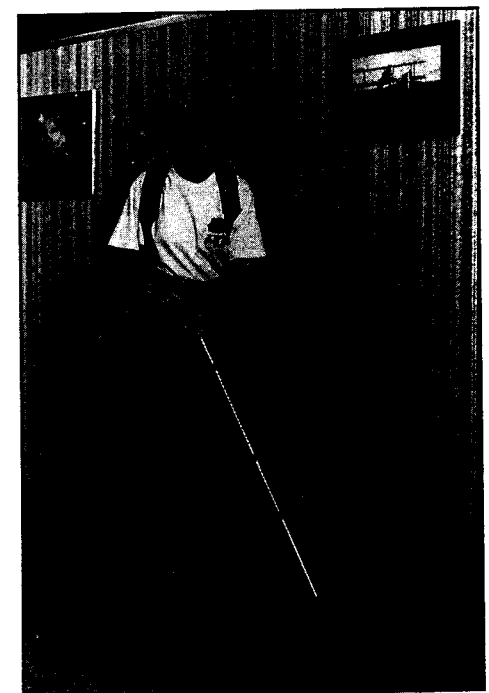
On upholstery, the tool can be used with or without the extension tube, simply attach it to the end nozzle of the hose.

## ROUND DUSTING BRUSH — VERTICAL SURFACES CLEANING



Both the brush bristles and the floor tool are manufactured from materials which will not mark or scuff curtains, partitions or walls.

## POWERHEAD FOR LARGE OPEN AREA CLEANING



Plug in the powerful (optional) Powerhead and you are on your way to cleaning up to 750 square metres in an hour. Just walk and clean — the Powerhead brushes up deep in-ground grit from carpets with ease.

# PARTS LIST

## ROCKET VAC

ITEM No.	PART NO.	DESCRIPTION	QTY.
1	806162	Lid Cannister USW	1
2	806253	Dust Bag	1
3	805439	Filter Secondary	1
4	806163	Cannister Upper ABS 4 Hole (Grey)	1
4	806296	Cannister Upper ABS 4 Hole (White)	1
5	806497	Sealing Ring	2
6	806160	Motor 1000W 240V 50/60Hz	1
6	806195	Motor 1000W 110V 50/60Hz	1
7	806101	Insulation Acoustic Motor	1
8	806098	Insulation Acoustic Fan Case 5 piece set	1
9	806145	Cannister Lower (Grey)	1
9	806293	Cannister Lower (White)	1
10	806104	Wire Brown 150mm	1
11	806107	Wire Blue 180mm	1
12	830054C	Cable Tie CT 95M	2
13	806108	Terminal Block 2506470	1
14	803718	Grommet Cable	1
15	806141	Cable Clamp Rv	1
16	805312	Screw PT WN 1412 KB 40 x 16 ZP	2
17	806261	Screw 3.85 Dia x 18 PXR Hi-Lo	1
18	806156	Lead Electrical 18 metres	1
19	806143	Exhaust Deflector (Grey)	1
19	806291	Exhaust Deflector (White)	1
20	806097	Filter "After"	1
21	806100	Insulation Acoustic Lower	1
22	806099	Insulation Acoustic End Cap	1
23	806137	End Cap	1
24	805283	Screw 11-16 x 18.4 Hi-Lo	8
25	806102	Wire Brown 40mm	1
26	806103	Wire Blue 40mm	1
27	806144	Switch Mounting Plate (Grey).	1
27	806292	Switch Mounting Plate (White)	1
28	806110	Switch 2 Pole	1
29	806134	Power Outlet 2506189	1
30	806135	Capacitor 0.22µF RFI 2506100	1
31	806090	Cap Tube B123	2
32	806146	Strap Padded Waist	1
33	806092	Tube Spacer PVC 20mm x 2 x 65L	4
34	830022C	Screw 8# x 3/8 Pan P x R STS Black	4
35	806148	Strap Padded Black	2

ITEM No.	PART NO.	DESCRIPTION	QTY.
36	806149	Strap Padded Shoulder	2
37	806094	Frame Tube	1
38	830120C	Washer 4.3 I.D. x 8.5 O.D. x 3 Black Nylon	2
39	830118C	Screw No. 8 x 15 Black Streaker	2
40	830116C	Washer 3/16 I.D. x 5/8 O.D. ZP	4
41	804922	Clamp Cannister Lid	2
42	830035C	Rivet Pop Cannister 4-4	4
43	830026C	Washer 1/8 I.D. x 3/8 O.D. ZP	4
44	806165	Hose Assembly RV 3 Pin Bayonet	1
45	806227	Rubber Collar	1
46	410562	Short Swivel End 32mm	1
47	806106	Vac Hose 1.2 metres	1
48	501634	Click Ring	1
49	501807	Screw Cuff HUL 32mm F.HE15	1
50	806118	Bent Wand	1
51	806117	Wand Chrome 32mm	2
52	806133	Crevice Tool	1
53	410592	Combination Floor Tool	1
54	830130C	Speed Clip No. 1219	1
54	830131C	Screw No. 6 x 5/8 CSK ZP	1

## EXTENDED FILTER BAG

ITEM No.	PART NO.	DESCRIPTION	QTY.
54	806022	Extended Filter Bag Kit	1
55	806019	Cannister Lid Assembly	1
56	806174	Extended Filter Bag	1
57	806179	Wire Frame	1

## OPTIONAL TOOL ACCESSORIES

ITEM No.	PART NO.	DESCRIPTION	QTY.
58	806147	Hard Floor Tool	1
59	801302	Dusting Brush	1
60	925045	G2 220V/240V Power Head c/w 72032 Elbow and 64406 Extra Lead	1
	925048	G2 110V Power Head c/w 72032 Elbow and 64406 Extra Lead	1
61	806119	Carpet Nozzle	1

**HAKO AUSTRALIA PTY LIMITED**

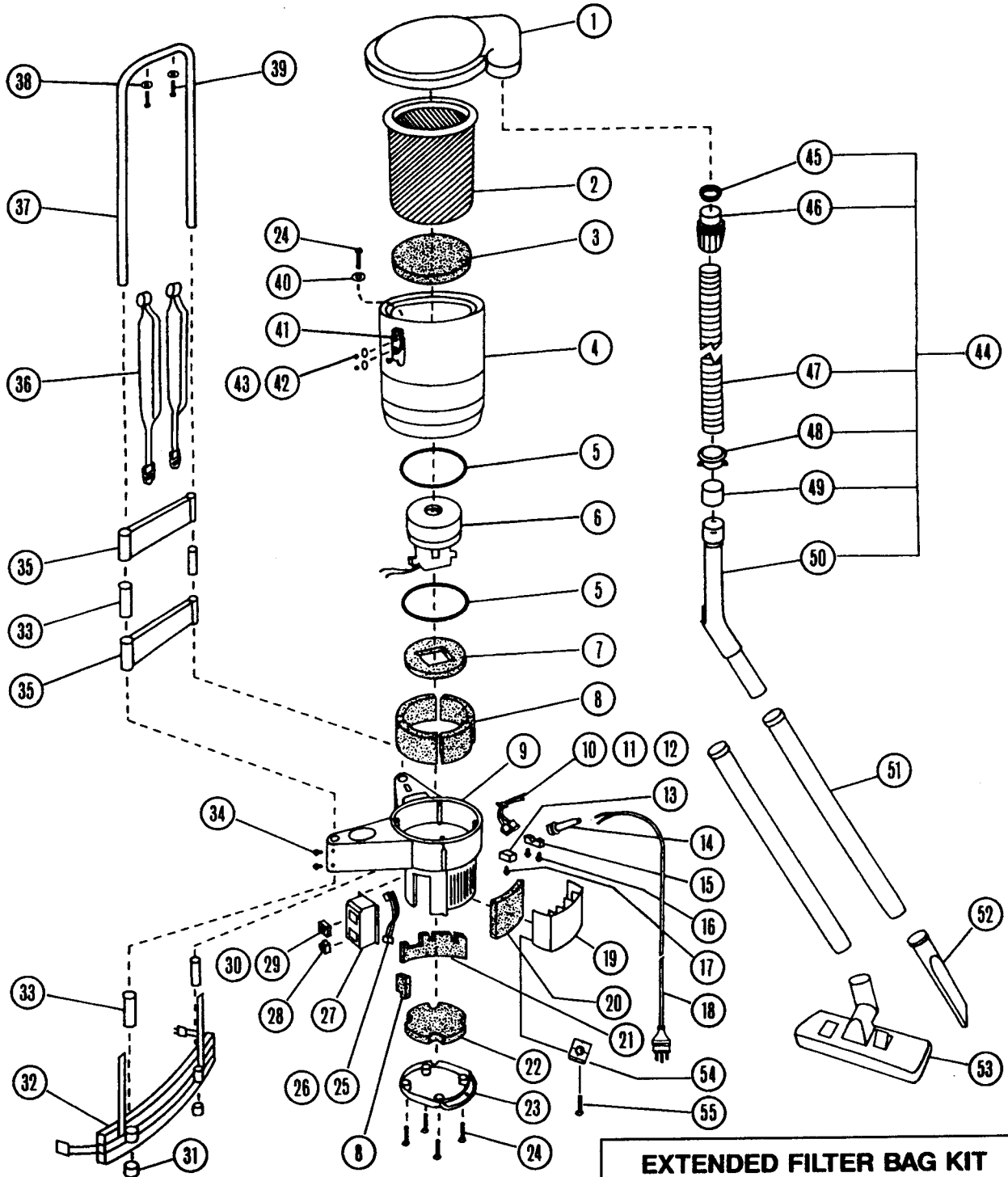
ACN 002 858 059

6 Pike Street,  
Rydalmere NSW 2116 Australia  
PO Box 360 Rydalmere NSW 2116

Telephone: (02) 9684 2433 Facsimile: (02) 9684 2278



# EXPLODED DIAGRAM



### OPTIONAL TOOL ACCESSORIES

60  
59  
61  
58

### EXTENDED FILTER BAG KIT

55  
56  
57  
54