

# ***CC1100 to CC1200***

## ***Drum manual***

Drum structure and design for machines CC100 to CC1200



## Introduction

- The machine
  - Dynapac CC1100/1200 are two self-propelled vibratory tandem rollers in the 2 metric tonnes class featuring 1100/1200 mm wide drums. The machines are equipped with drive, brakes, and vibration on both drums.
- Intended use
  - CC1100/1200 has primarily been designed for the compaction of asphalt, but has excellent compaction capacity for reinforcement layers and bearing courses. The roller is mainly intended for compacting asphalt on streets and minor roads in towns. It has sufficient capacity to follow a small asphalt paver.



## Tightening torque

**Tightening torque in Nm for oiled or dry bolts tightened with a torque wrench\***

*Metric coarse screw thread, bright galvanized  
(fzb)*

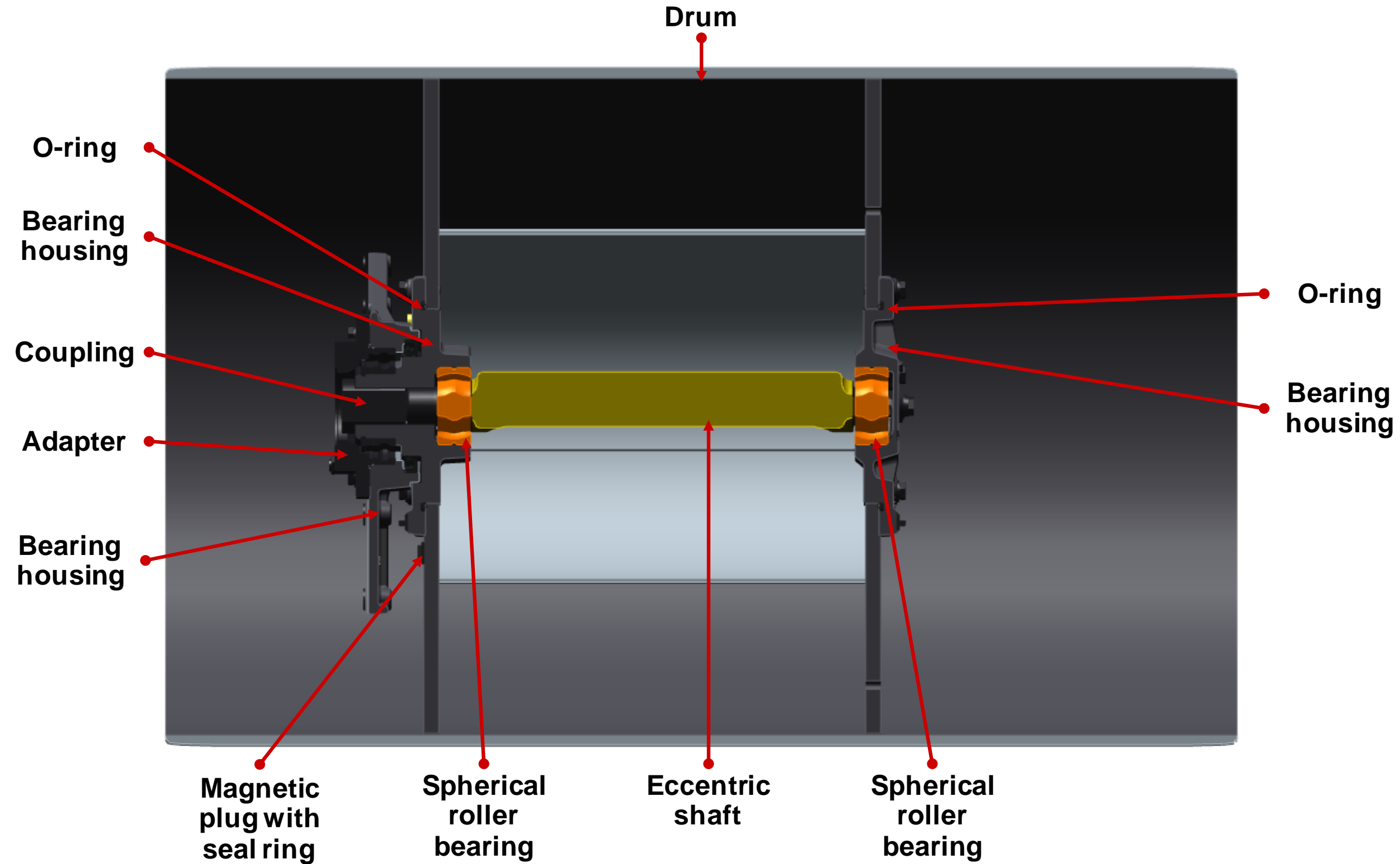
M-thread	8.8, Oiled	8.8, Dry	10.9, Oiled	10.9, Dry	12.9, Oiled	12.9, Dry
<b>M6</b>	8,4	9,4	12	13,4	14,6	16,3
<b>M8</b>	21	23	28	32	34	38
<b>M10</b>	40	45	56	62	68	76
<b>M12</b>	70	78	98	110	117	131
<b>M14</b>	110	123	156	174	187	208
<b>M16</b>	169	190	240	270	290	320
<b>M20</b>	330	370	470	520	560	620
<b>M22</b>	446	497	626	699	752	839
<b>M24</b>	570	640	800	900	960	1080
<b>M30</b>	1130	1260	1580	1770	1900	2100

*Metric coarse thread, zinc-treated  
(Dacromet/GEOMET)*

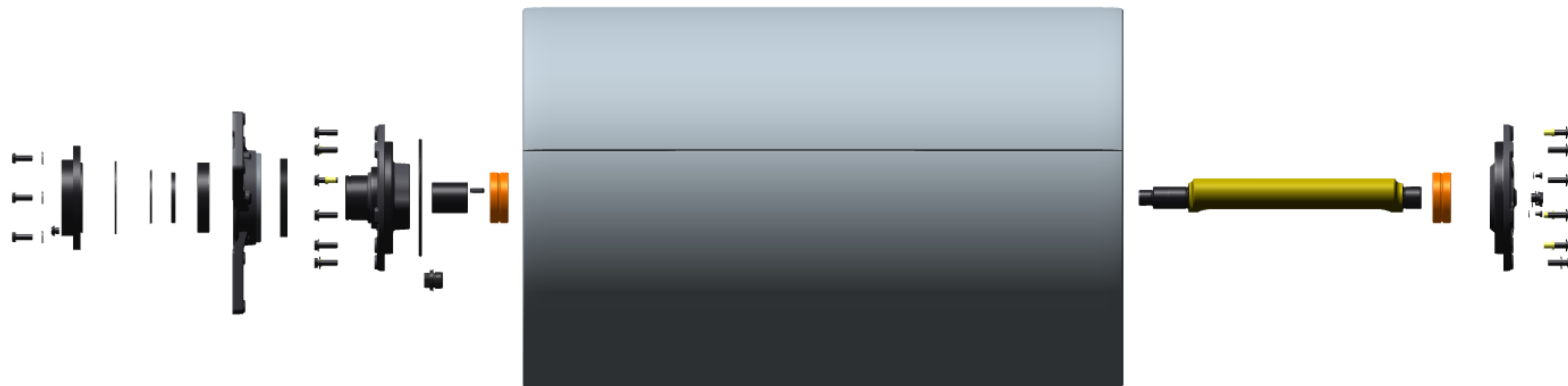
M-thread	10.9, Oiled	10.9, Dry	12.9, Oiled	12.9, Dry
<b>M6</b>	12	15	14,6	18,3
<b>M8</b>	28	36	34	43
<b>M10</b>	56	70	68	86
<b>M12</b>	98	124	117	147
<b>M14</b>	156	196	187	234
<b>M16</b>	240	304	290	360
<b>M20</b>	470	585	560	698
<b>M22</b>	626	786	752	944
<b>M24</b>	800	1010	960	1215
<b>M30</b>	1580	1990	1900	2360

*\*If nothing else stated please follow above tightening torque,  
(Dynapac standard)*

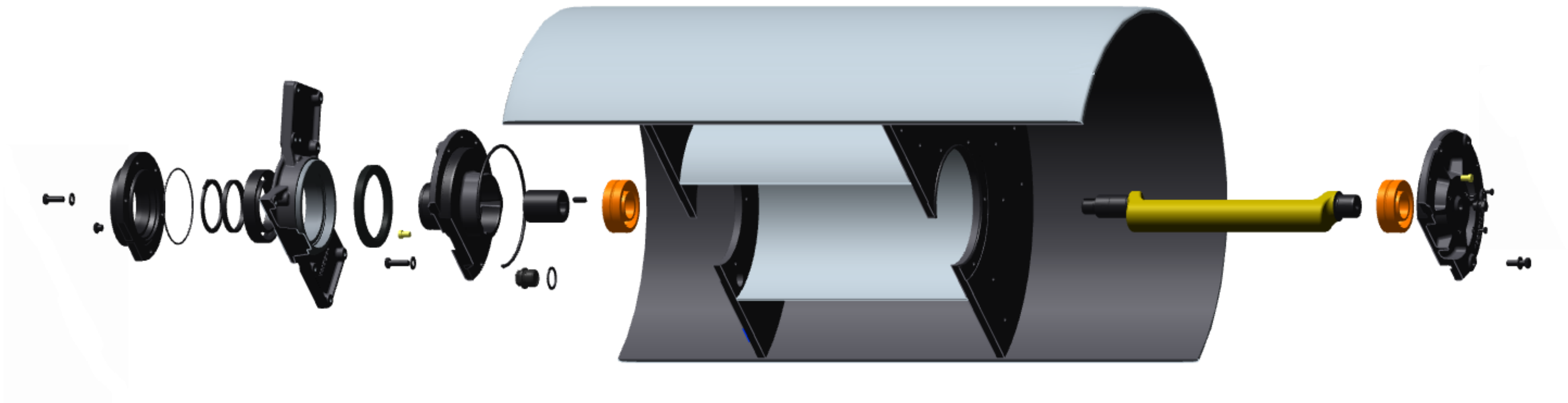
## Drum structure, parts mounted (seen from the front)



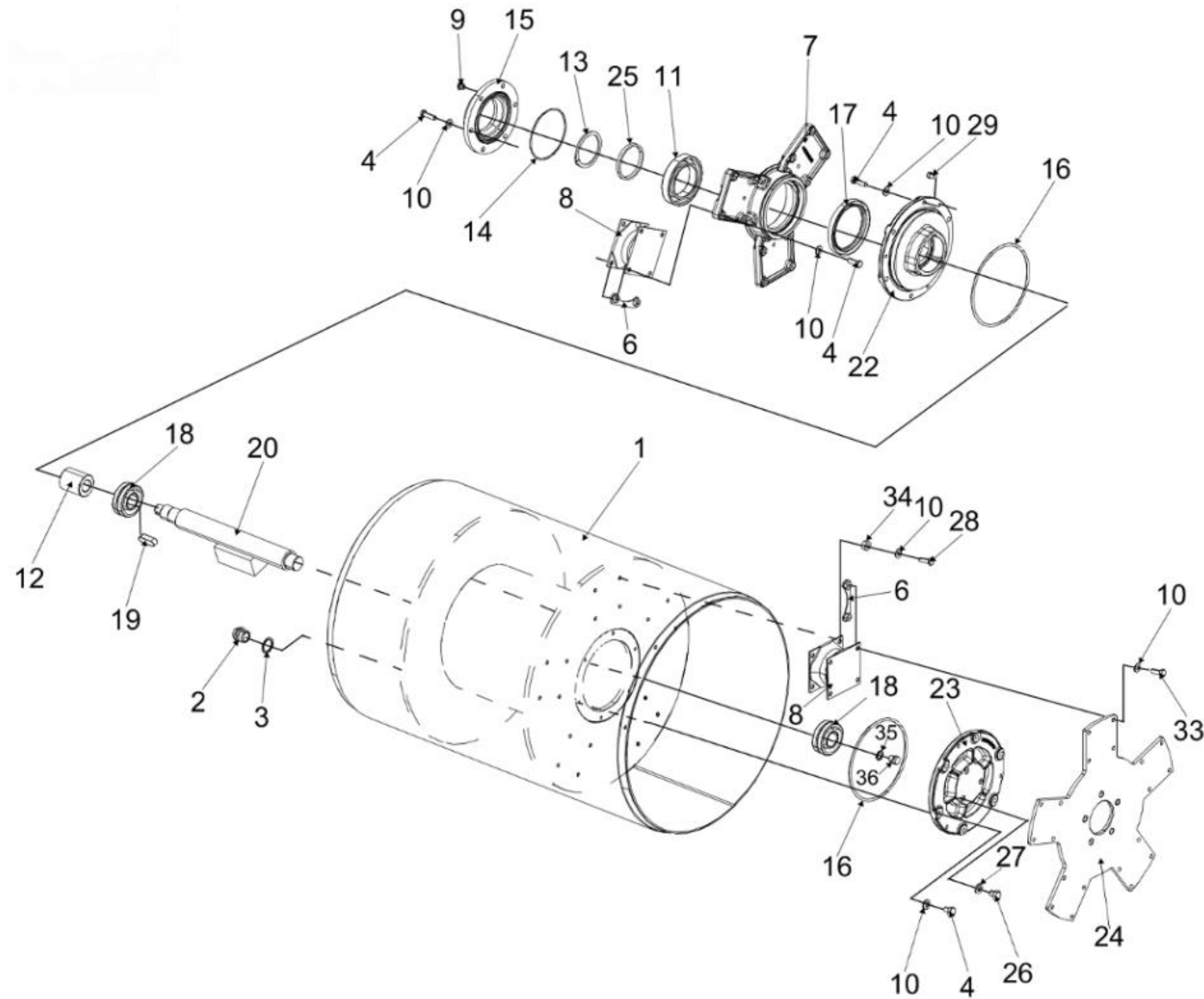
## *Drum structure, parts extracted (seen from the front)*



*Drum structure, parts extracted, sectioned view (seen from the front)*



## Included parts (CC1100plus)

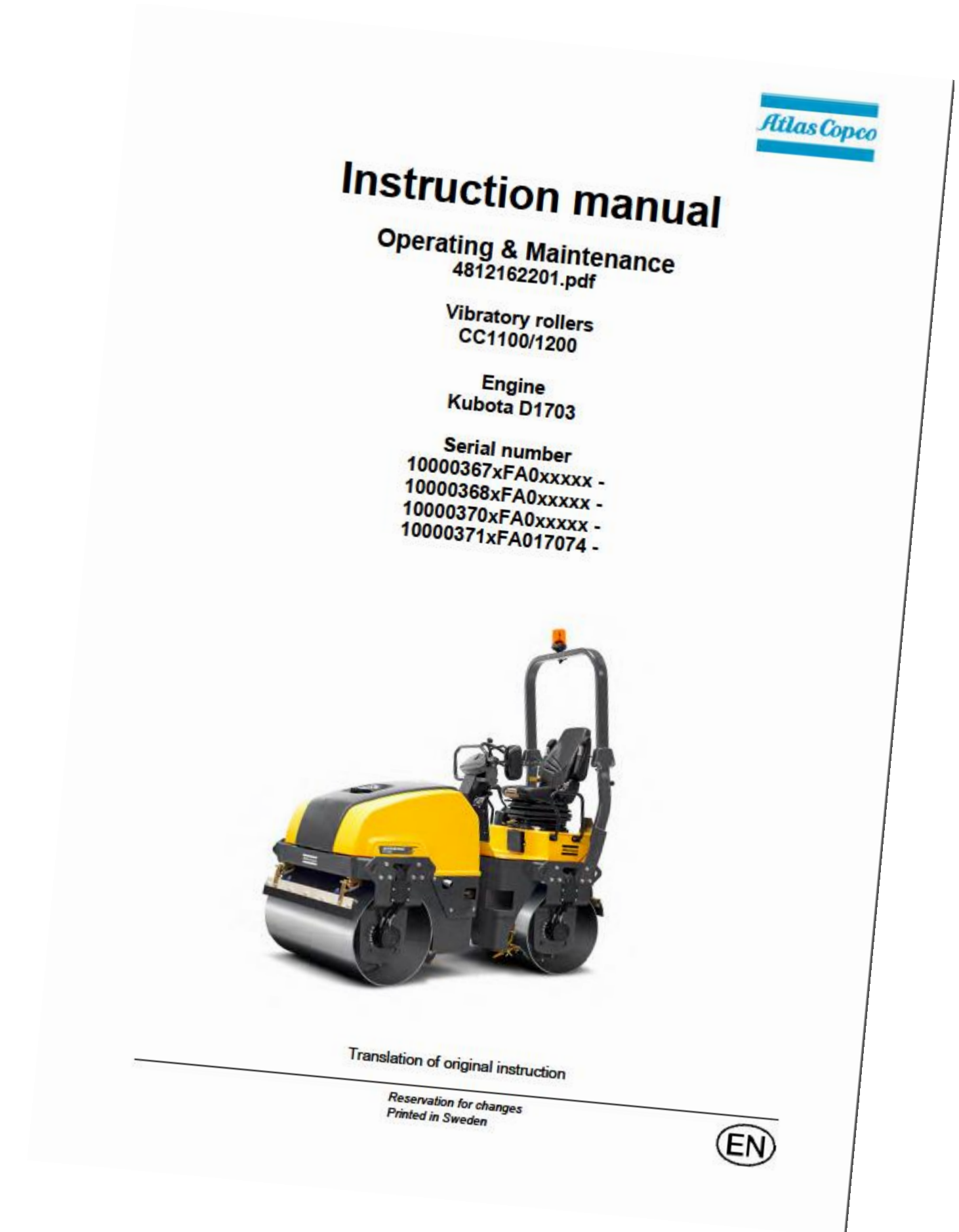


Item	Part Number	Name	Item	Part Number	Name
1	4700357049	Drum	19	4700350029	Feather key
2	4700343744	Magnetic plug	20	4812119820	Eccentric shaft
3	4700162017	Seal ring	22	4812118694	Bearing housing
4	4700500030	Screw hexagon	23	4812118692	Bearing housing
6	4700379179	Holder	24	4700357055	Drive disc
7	4812120391	Bearing housing	25	4700358689	Spacer ring
8	4812121607	Shock absorber	26	4700500044	Screw M6x8
9	4700343490	Air breather	27	4700904228	Washer 6,4x12x1,5
10	4700904230	Washer	28	4812110639	Hexagon socket head cap screw M10x030H
11	4700111018	Ball bearing	29	4700903287	Plug
12	4700349202	Coupling	33	4812110620	Hexagon head screw M10x30H 8.8 A3K
12*	4700391929	Rubber cross	34	4812110673	Spacer
13	4700903154	Retaining ring	35	4700162011	Hexagon head screw M10x30H 8.8 A3K
14	4700160132	O-ring 70	36	4700232143	Plug, M16
15	4700358666	Adapter			
16	4700923951	O-ring			
17	4700163049	Radial lip type seal			
18	4700904258	Spherical roller bearing			

## Summary

### Points to be noted

- The instructions do not describe the dismantling of each individual part. As a complement, therefore, use the Spare Part Catalogue as a checklist, so no parts will be forgotten during assembly.
- The item numbers used in these instructions are not necessarily the same as those used in the Spare Part Catalogue.
- Always read the correct instruction manual of the specific machine before starting to work on the machine
- If any question would arise, do consult an Dynapac service department for aid



***Your Partner  
on the Road Ahead***