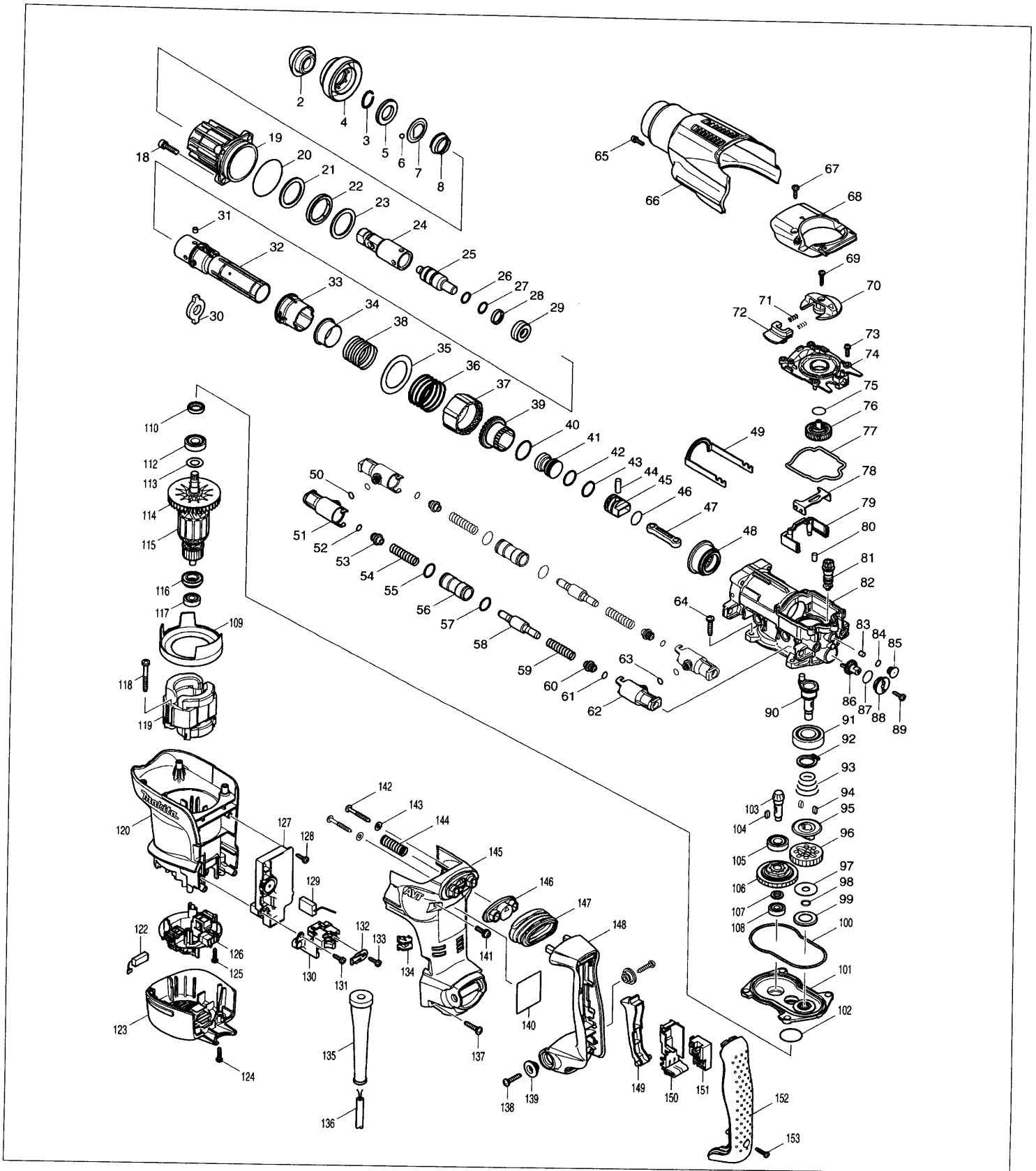


SERVICE DRAWING

MODEL NO. HR3210C

PAGE 1



SPARE PARTS LIST

MODEL NO. HR3210C

ITEM	PART NO.	DESCRIPTION	QTY	NOTE
002	286282-0	TOOL HOLDER CAP /HR3200C/HR3210C	1	
003	233940-9	RING SPRING/BHR202RFE/HR2450/HR2450FT	1	
004	450245-4	CHUCK COVER /HR3200C/HR3210C	1	
005	257288-5	RING 21 /HR3200C/HR3210C	1	
006	216022-2	STEEL BALL 7/HR2440/HR2450/HR2400/HR2230	2	
007	345873-7	GUIDE WASHER /HR3200C/HR3210C	1	
008	234049-0	CONICAL COMPRESSION SPRING 22-32/HR3200C	1	
018	922341-3	HEX. SOCKET HEAD BOLT M6X25	4	
019	158533-0	BARREL COMPLETE /HR3200C/HR3210C	1	
020	213656-2	O RING 53 /HM1200K /HR3200C /HR3210C	1	
021	267810-0	FLAT WASHER 34 /HR3200C/HR3210C	1	
022	262138-1	URETHANE RING 34 /HR3200C/HR3210C	1	
023	267810-0	FLAT WASHER 34 /HR3200C/HR3210C	1	
024	324840-5	TOOL HOLDER /HR3200C /HR3210C	1	
025	324849-7	IMPACT BOLT /HR3200C/HR3210C	1	
026	213228-3	O RING 15 /HR3000C/HR3200C/HR3210C	1	
027	213228-3	O RING 15 /HR3000C/HR3200C/HR3210C	1	
028	213321-3	FLURO CARBON RESIN RING 20 /HR3000C	1	
029	424062-8	RUBBER RING 13 /HR3200C /HR3210C	1	
030	324838-2	SLIDE PLATE /HR3200C /HR3210C	1	
031	256266-2	PIN 6 /HR3200C/HR3210C	4	
032	331794-9	CYLINDER 25 /HR3200C/HR3210C	1	
033	450243-8	SLIDE SLEEVE /HR3200C /HR3210C	1	
034	331805-0	RING 29 /HR3200C /HR3210C	1	
035	267360-5	FLAT WASHER 40 /HR3200C/HR3210C	1	
036	234052-1	COMPRESSION SPRING 42 /HR3200C/HR3210C	1	
037	450236-5	LOCK SLEEVE /HR3200C/HR3210C	1	
038	234050-5	COMPRESSION SPRING 34 /HR3200C/HR3210C	1	
039	331795-7	DRIVING SLEEVE /HR3200C/HR3210C	1	
040	213434-0	O-RING /5620DWA/5621DWFE/BSS610/HR3200C	1	
041	324858-6	STRIKER /HR3200C /HR3210C	1	
042	213283-5	O-RING /HR3200C/ HR3210C	1	
043	213283-5	O-RING /HR3200C/ HR3210C	1	
044	256087-2	PIN 7 /HR3200C/ HR3210C	1	
045	324918-4	PISTON /HR3200C/HR3210C	1	
046	213262-3	O RING 18 /4100NB/4101RH/AN943/6843/6842	1	
047	450235-7	CONNECTING ROD /HR3200C/HR3210C	1	
048	227531-6	SPIRAL BEVEL GEAR 37 /HR3200C/HR3210C	1	
049	345867-2	LINK ARM	1	
050	213030-4	O RING 8 /AF502 /HR3210C /HR4511C	2	
051	450248-8	PIPE HOLDER /HR3210C	2	
052	213030-4	O RING 8 /AF502 /HR3210C /HR4511C	2	
053	450239-9	SPRING GUIDE /HR3010C	2	
054	234048-2	COMPRESSION SPRING 10 /HR3210C	2	
055	213275-4	O RING 18 / HR4010C	2	
056	331800-0	PIPE 15 /HR3010C	2	
057	213275-4	O RING 18 / HR4010C	2	
058	324862-5	COUNTER WEIGHT /HR3210C	2	
059	234048-2	COMPRESSION SPRING 10 /HR3210C	2	
060	450239-9	SPRING GUIDE /HR3010C	2	
061	213030-4	O RING 8 /AF502 /HR3210C /HR4511C	2	
062	450248-8	PIPE HOLDER /HR3210C	2	
063	213030-4	O RING 8 /AF502 /HR3210C /HR4511C	2	
064	266041-8	TAPPING SCREW FLANGE PT 5X25/KP0810	4	

SPARE PARTS LIST

MODEL NO. HR3210C

PAGE 2

ITEM	PART NO.	DESCRIPTION	QTY	NOTE
065	922123-3	HEX SOCKET HEAD BOLT M4X14 / PS-221TH	1	
066	450254-3	CRANK HOUSING COVER /HR3010C	1	
067	266192-7	TAPPING SCREW 4X14 /2012NB/LS1214B	2	
068	318201-9	CRANK CAP COVER /HR3200C /HR3210C	1	
069	265995-6	TAPPING SCREW4x18/HR2440F/HR2450F/BSS610	1	
070	450249-6	CHANGE LEVER /HR3200C/HR3210C	1	
071	233436-0	COMPRESSION SPRING 3 / HR4010C /HR4002	2	
072	450250-1	LOCK BUTTON /HR3200C /HR3210C	1	
073	911128-8	P.H. SCREW M4 X 16 /4107RH/BO5021/2012NB	5	
074	450241-2	CRANK CAP /HR3200C	1	
075	213223-3	O RING 16 /AF502/HR3210C/HR3200C	1	
076	158437-6	SPUR GEAR 33 COMPLETLE/HR3210C /HR3200C	1	
077	424064-4	SEAL RING B /HR3210C /HR3200C	1	
078	345868-0	LINK PLATE/HR3210C /HR3200C	1	
079	450247-0	AIR PIPE /HR3210C /HR3200C	1	
080	263005-3	RUBBER PIN 6 /LS1013B/LS1014B/HR3210C	2	
081	450242-0	GEAR SHAFT / HR3210C /HR3200C	1	
082	158712-0	CRANK HOUSING COMPLETE /HR3200C	1	
083	443138-2	FILTER	1	
084	213030-4	O RING 8 /AF502 /HR3210C /HR4511C	1	
085	450238-1	FILTER CAP/HR3210C /HR3200C	1	
086	450244-6	CRANK GEAR/HR3210C /HR3200C	1	
087	213223-3	O RING 16 /AF502/HR3210C/HR3200C	1	
088	450237-3	CAP HOLDER /HR3200C	1	
089	266192-7	TAPPING SCREW 4X14 /2012NB/LS1214B	1	
090	324839-0	CRANK SHAFT/HR3210C/HR3200C	1	
091	211332-2	BALL BEARING 6004LLU /HR3000C/HR4002	1	
092	961060-6	RETAINING RING S-20 /HR3000C/HR4002	1	
093	231991-6	CONICAL COMP.SPRING 21-31 /HR3000C/	1	
094	254239-9	KEY 4 /HR3000C /HR3210C/HR3200C	2	
095	324848-9	CLUTCH/HR3210C /HR3200C	1	
096	227188-3	SPUR GEAR 33 /HR3210C /HR3200C	1	
097	253197-6	FLAT WASHER 10	1	
098	961036-3	RETAINING RING WR-10 /HR3200C/HR3210C	1	
099	345869-8	CUP WASHER 18 /HR3200C /HR3210C	1	
100	424063-6	SEAL RING A /HR3200C/HR3210C	1	
101	158534-8	GEAR HOUSING COMPLETE /HR3200C/HR3210C	1	
102	213415-4	O RING 28/HR3200C /HR3210C/ 9403/HM1100C	1	
103	227533-2	SPIRAL BEVEL GEAR 9 /HR3200C/HR3210C	1	
104	254239-9	KEY 4 /HR3000C /HR3210C/HR3200C	1	
105	210105-0	BALL BEARING 6001LLU /HR2811F	1	
106	125421-6	TORQUE LIMITER ASSY /HR3200C/HR3210C	1	
107	257291-6	RING 10 /HR3200C/HR3210C	1	
108	210005-4	BALL BEARING 608DDW /9032/HR3000C/4323	1	
109	450251-9	BAFFLE PLATE /HR3200C/HR3210C	1	
110	213133-4	OIL SEAL 12 /HR2811F/HR3200C/HR3210C	1	
112	210105-0	BALL BEARING 6001LLU /HR2811F	1	
113	253084-9	FLAT WASHER 12 /HR3210C/HR3200C	1	
114	241863-7	FAN 70 /8406C/HR3000C/HR4002/HR3200C/	1	
115	513748-0	ARMATURE ASSY INC112-114 116 117/HR3200C INC. 112-114,116,117	1	
116	681650-6	INSULATION WASHER /HM1100C/HR3000C	1	
117	210005-4	BALL BEARING 608DDW /9032/HR3000C/4323	1	
118	266056-5	TAPPING SCREW FLANGE 5X45/9046/HR3200C	2	

SPARE PARTS LIST

MODEL NO. HR3210C

PAGE 3

ITEM	PART NO.	DESCRIPTION	QTY	NOTE
119	625813-4	FIELD /HR3200C/HR3210C	1	
120	450252-7	MOTOR HOUSING /HR3210C /HR3200C	1	
122	194160-9	CARBON BRUSH CB-350	1	
123	450253-5	REAR COVER /HR3210C /HR3200C	1	
124	265995-6	TAPPING SCREW4x18/HR2440F/HR2450F/BSS610	2	
125	265995-6	TAPPING SCREW4x18/HR2440F/HR2450F/BSS610	4	
126	638519-5	BRUSH HOLDER UNIT /HR3210C/HR3200C	1	
127	631784-5	CONTROLLER /HR3210C /HR3200C	1	
128	266192-7	TAPPING SCREW 4X14 /2012NB/LS1214B	1	
129	638406-8	LEAD UNIT / HR4011C /HR3200C/HR3210C	1	
130	450246-2	CORD CLAMP BASE /HR3210C /HR3200C	1	
131	266192-7	TAPPING SCREW 4X14 /2012NB/LS1214B	1	
132	687169-3	STRAIN RELIEF /HP1620/HP1620F/HP1621	1	
133	266192-7	TAPPING SCREW 4X14 /2012NB/LS1214B	1	
134	450240-4	LENS /HR3210C /HR3200C	1	
135	682560-0	CORD GUARD /9077/9079/HR3000C/HM1100C	1	
136	666426-2	POWER SUPPLY CORD 1.00-2-5.0 / HR4011C	1	
137	266041-8	TAPPING SCREW FLANGE PT 5X25/KP0810	2	
138	266041-8	TAPPING SCREW FLANGE PT 5X25/KP0810	2	
139	450352-3	SHOULDER SLEEVE 6 /HR3210C/HR3200C	2	
140	864538-7	HR3210C NAME PLATE	1	
141	911233-1	PAN HEAD SCREW M5 X 20 /HR4000C/HR4002	2	
142	266211-9	TAPPING SCREW 5 x 40 /HK0500/HR5211C	2	
143	267066-5	FLAT WASHER 5 /6811D/HR3210C	2	
144	234051-3	COMPRESSION SPRING 11 /HR3210C	1	
145	450255-1	HANDLE BASE /HR3210C	1	
146	419014-2	DUST COVER SUPPORT / HR4011C/HR3210C	1	
147	421912-8	DUST COVER / HR4011C/HR3210C	1	
148	450256-9	HANDLE /HR3210C	1	
149	419025-7	SWITCH LEVER / HR4011C/HR4002/HR5211C/	1	
150	154626-1	SWITCH HOLDER COMPLETE/ HR4010C/HR4002	1	
151	650567-4	SWITCH TG73B-1/ HR4010C/HR5201C/HR3200C	1	
152	450257-7	HANDLE COVER /HR3200C/HR3210C	1	
153	265995-6	TAPPING SCREW4x18/HR2440F/HR2450F/BSS610	1	
154	267383-3	FLAT WASHER 22 /HR3200C/HR3210C	1	
155	267721-9	WAVE WASHER 15	1	
A01	181573-3	GREASE VESSEL 100G /BHR200SF/HR3000C	1	
A02	135197-7	GRIP 36 ASSY /HR3200C/HR3210C	1	
A03	824825-6	PLASTIC CARRYING CASE	1	
A04	810409-6	CAUTION CARD	1	
A05	806480-6	HR3210C MODEL NO.LABEL	1	